



BID BULLETIN No.1	20 October 2023 (Friday)
--------------------------	---------------------------------

BIDDING NO.: IB23-408235-04	“ONE (1) LOT SUPPLY, DELIVERY, INSTALLATION, CONFIGURATION, TESTING & COMMISSIONING, AND UPGRADING OF THE CLOSED-CIRCUIT TELEVISION SURVEILLANCE SYSTEM AT DAP CONFERENCE CENTER IN TAGAYTAY”
APPROVED BUDGET CEILING (ABC): ₱3,500,000.00	
DATE OF PRE BID CONFERENCE 10 October 2023 (Tuesday); 10:00 AM Via Google Meet Platform meet.google.com/uun-xyfm-ssr	

Relative to the conducted Pre-Bid Conference via Google Meet for the above-stated Project last October 10, 2023 (Tuesday) and the conducted site visit last October 12-13, 2023, the following clarifications from prospective bidders are being posted for the information of all concerned, as approved by the BAC & TWG:

References based on the OBD / Pre-Bid Conference / Site Inspection	Description based on the OBD / Queries	New description / Clarification
OBD page 26, item No.1.01 of (Section VII. Technical Specifications) Supply and installation of Dome IP CCTV Camera	Specification: <ul style="list-style-type: none"> •4MP (1920 × 1080) @30 fps, 1/2.9" image sensor •24/7 Full-color image, starlight, WDR •SMART H.264+/H.265+ •2.8/3.6 mm fixed lens •Built-in warm light/IR LED, the max. illumination distance is 30 m and the max. warm light distance is 10m •Intelligent monitoring: Intrusion, tripwire (the two functions support the classification and accurate detection of vehicle and human). •12V DC/PoE power supply •IP67 protection •with Warranty 	Specification: <ul style="list-style-type: none"> •1/3 in. 4MP Progressive-scan CMOS Sensor •Triple-stream Encoding •Smart H.265+ and Smart H.264+ Dual Codec •4MP (2688 × 1520) @30 fps, 2.8, Fixed Lens •Starlight Technology for Low-light Applications •Analytics+ Function – Perimeter Protection and Smart Motion Detection •True Wide Dynamic Range (120 dB) and Day/Night IR Cut Filter •Enhanced Power and Data Transmission Distances (ePoE) •Arctic Pro Series Camera – Operational down to -40deg C(-40deg F) •IP67 Ingress Protection and IK10 Vandal Resistance •with Warranty
OBD page 27-28, item No.1.05 of (Section VII.	Specification: Supply and installation of Data Cabinet	Specification: Supply and installation of Data Cabinet



References based on the OBD / Pre-Bid Conference / Site Inspection	Description based on the OBD / Queries	New description / Clarification
<p>Technical Specifications) Data Cabinet</p>	<ul style="list-style-type: none"> •Data Cabinet with a minimum specification of at least: Can accommodate at least four (4) and two (2) Data Switches each; •(9U & 12U) 19" standard opening; Framing and Paneling Gauge#16, Black (powder-coated); Adjustable with mounting railings; Plexiglas Front Door with Lock; •Detachable Side Panels with Lock & Ventilation; Detachable Back Panels with Lock; With 1 unit Vertical powerstrip 4 CO's , 3 prong, 220V, 20 Amp fuse; With 1 unit Vertical Cable Manager at the back ring type; and with 2 pcs. Exhaust Fan at the top panel •with Warranty 	<ul style="list-style-type: none"> •Data Cabinet will be installed in the following areas: <ol style="list-style-type: none"> 1) PABX Room (28U / 4 feet Data Cabinet); 2) Workshop Electrical Room (9U / 1.5 feet Data Cabinet); 3) Electrical Room at RFS Office (9U / 1.5 feet Data Cabinet); and 4) Basement Electrical Room (12U / 2 feet Data Cabinet) •(9U, 12U, & 28U) 19" standard opening; Framing and Paneling Gauge#16, Black (powder-coated); Adjustable with mounting railings; Plexiglas Front Door with Lock; •Detachable Side Panels with Lock & Ventilation; Detachable Back Panels with Lock; With 1-unit Vertical powerstrip 4 CO's, 3 prong, 220V, 20 Amp fuse; With 1-unit Vertical Cable Manager at the back-ring type; and with 4 pcs. Exhaust Fan at the top panel •with Warranty <p>Kindly refer to Annex "A"-Revised Section VII: Technical Specifications and Annex "B"-Revised Form 2: Price Schedule, and</p>



References based on the OBD / Pre-Bid Conference / Site Inspection	Description based on the OBD / Queries	New description / Clarification
		Annex “C” Schedule of Requirements.
<p>OBD page 27, item No. 1.03 of (Section VII. Technical Specifications)</p> <p>Smart POE Unmanaged Data Switch</p>	<p>Specification:</p> <ul style="list-style-type: none"> •Smart POE Unmanaged Data Switch (The next generation Smart switch, provides 48 ports – 48 10/100/1000 Base-T POE ports, support IEEE 802.3af/ at power supply standard, single port maximum output PoE power 30W, 370W max output PoE power, support unified/ centralized management, lifetime license); •Combo PoE Switch •Interface: Combo 1000 Base-T /SFP port x 110/100 Base-T x16 (Hi PoE/PoE+/PoE) PoE budget: 135 W Dimension: 340 mm x 200 mm x 43 mm CCTV monitor mode, VLAN isolation mode •with Warranty 	<p>Specification:</p> <ul style="list-style-type: none"> •Smart POE Unmanaged Data Switch (The next generation Smart switch, provides 24 ports – 24 10/100/1000 Base-T POE ports, support IEEE 802.3af/ at power supply standard, single port maximum output PoE power 30W, 370W max output PoE power, support unified/centralized management, lifetime license); •Combo PoE Switch •Interface: Combo 1000 Base-T /SFP port x 110/100 Base-T x16 (Hi PoE/PoE+/PoE) PoE budget: 135 W Dimension: 340 mm x 200 mm x 43 mm CCTV monitor mode, VLAN isolation mode •with Warranty
<p>OBD page 34, item No.1.57 of (Section VII. Technical Specifications)</p>	<p>Description:</p> <ul style="list-style-type: none"> •End to End Termination, Testing including Fluke testing and Optimal Time-Domain Reflectometer (OTDR) & Commissioning, Fiber Optics, Networking, Fiber Optic Cable Design, and Installation, Fiber Termination and Fusion Splicing (FOC Fusion Machine), FOC Patch Panel 	<p>Description;</p> <ul style="list-style-type: none"> •End to End Termination, Testing including Fluke testing and Optimal Time-Domain Reflectometer (OTDR) & Commissioning, Fiber Optics, Networking, Fiber Optic Cable Design, and Installation, Fiber Termination and Fusion Splicing (FOC Fusion Machine), FOC Patch Panel



References based on the OBD / Pre-Bid Conference / Site Inspection	Description based on the OBD / Queries	New description / Clarification
	Splicing, and Termination, Continuity Testing Power source and Light Meters Configuration, Installation / termination and adjustment, and Programming, for the entire IP CCTV system;	Splicing, and Termination, Continuity Testing Power source and Light Meters Configuration, Installation/termination and adjustment, and Programming, Decommissioning and Turn-over of all identified obsolete CCTV Cameras, Cablings, and other accessories, and system integration and configuration of existing CCTV System at Cottages (via internet/data connection) for the entire IP CCTV system. •Repair of three (3) identified CCTV units at Cottages. •Supply and installation of 4+2 100 Mbps Long-Range PoE Switch (Model: WI-PS205H).
OBD page 29 Item 1.12 (Section VII. Technical Specifications) UTP CAT6 Cable	Specification: •Supply & Installation of UTP CAT6 Cable; •with Warranty	Specification: •Supply & Installation of Universal Twisted Pair (UTP) Category 6 (CAT 6) Cable, 305 meter or 1000 ft. per box; • with Warranty Kindly refer to Annex "A"-Revised Section VII: Technical Specifications and Annex "B"-Revised Form 2: Price Schedule
Site Inspection	Request/Follow-up: Detailed Floor Plan that includes the following:	TWG Reply: Kindly refer to Annex "A"-Revised Section VII: Technical Specifications



References based on the OBD / Pre-Bid Conference / Site Inspection	Description based on the OBD / Queries	New description / Clarification
	<ul style="list-style-type: none">-with plotting of cable tray or desired location on where the cable tray to be layout in your premises-with detailed dimension and exact location of existing camera with label or numbering that to be upgraded and additional IP Camera-clear copy-pdf format	and Annex “B”-Revised Form 2: Price Schedule for the requested floor plans, CCTV locations, view, and cable tray layout, including the Proposed Single Line Diagram for the CCTV Surveillance System
Site Inspection	Query: Is this project subject for PEZA application? <ul style="list-style-type: none">-Electronics Permit-Permit-to-install	TWG Reply: The project aims to install a new electronic system, particularly to CCTV Surveillance System. It is a must to have all necessary permits that may be required by other oversight agencies such as Local Government Units (LGUs). All necessary permits that may be required by this transaction must be secured by the winning bidder.
Site Inspection	Query: For cable tray structure, <ul style="list-style-type: none">-Is a cable tray a fully enclosed or perforated type of cable tray?-Is this galvanized or powdered coated only?	TWG Reply: For cable tray structure, <ul style="list-style-type: none">-Fully enclosed. The Cable Tray must be the same as the cable tray installed at the Dormitory Building for the Access Points Project.-The cable must be Powdered coated.



References based on the OBD / Pre-Bid Conference / Site Inspection	Description based on the OBD / Queries	New description / Clarification
	<p>-If powdered coated, what is the preferred color?</p> <p>-What is the dimension of the cable tray or wireways?</p>	<p>-The preferred Color for the cable tray is gray.</p> <p>-Dimensions of the Cable Tray or wire ways are the following: Height: two (2) inches; Width: six (6) inches; Length: three (3) meters.</p>
Site Inspection	<p>Query:</p> <p>What type of conduit to be used to embed that passing or crossing along the road and perimeter going to the nearest data cabinet?</p>	<p>TWG Reply:</p> <p>PVC Orange Conduit Pipes (Schedule 80) may be used to embed that passing or crossing the road (Dormitory Building to Engineering Building), and perimeter (Gate 2) going to the nearest data cabinet.</p>
Site Inspection	<p>Query:</p> <p>Camera #57 & 58 (additional) at the Perimeter, where is the location of Data Cabinet that will link the camera #57, and 58?</p>	<p>TWG Reply:</p> <p>The location of the Data Cabinet that will link the camera #57 and #58 is the PABX Room.</p>
Site Inspection	<p>Agreement:</p> <p>That we allow us to used PVC pipe and plastic molding for the layout.</p>	<p>TWG Reply:</p> <p>PVC Pipes are used to distribute UTP Cables from the Cable Tray to the respective CCTV Camera Locations. The use of plastic molding maybe permitted at areas/locations which needs to consider the aesthetic condition when it will be installed in that particular area/locations. Such areas may be at Upper Lobby, Conference Hallways, Workshop Hallways, etc.</p>



References based on the OBD / Pre-Bid Conference / Site Inspection	Description based on the OBD / Queries	New description / Clarification
	That we allow us to mount the perimeter camera to your Street Light with Pole.	This is noted. Kindly include the weatherproof boxes to be mounted for each perimeter camera that would be mounted to the Street Light with Pole.
Site Inspection	<p>Request:</p> <p>We would like to request an original or clear copy of the file:</p> <ol style="list-style-type: none"> 1) Proposed CCTV location, view, and number 2) Proposed CCTV Surveillance System Layout with dimensions on floor plan 3) Floor Plan with cable tray layout 	<p>TWG Reply:</p> <p>Kindly refer to Annex “A”- Revised Section VII: Technical Specifications and Annex “B”- Revised Form 2: Price Schedule for the requested floor plans, CCTV locations, view, and cable tray layout, including the Proposed Single Line Diagram for the CCTV Surveillance System</p>
<p>OBD page 30, item No.1.19 of (Section VII. Technical Specifications) Area 1 (Data Cabinet Installation at PABX Room)</p> <p>Site Inspection</p>	<p>Specification:</p> <p>Installation of Data Cabinet with height 12U / 2 ft., Powder Coated, Black, perforated two side panels, Perforated back, and front Door; German cooling fan, with three pins German type plug, 1wire,4 fans (cable length, 1M); 1U 19” power distribution unit, w/ aluminum body, US (NEMA5-15P) Plug, 6 universal outlets, w/LED master switch at PABX Room;</p>	<p>Specification:</p> <p>Installation of Data Cabinet with height 28U / 4 ft., Powder Coated, Black, perforated two side panels, Perforated back, and front Door; German cooling fan, with three pins German type plug, 1wire,4 fans (cable length, 1M); 1U 19” power distribution unit, w/ aluminum body, US (NEMA5-15P) Plug, 6 universal outlets, w/LED master switch at PABX Room.</p>
<p>OBD page 30, item No.1.27 of (Section VII. Technical Specifications) Area 1 (Data Cabinet Installation at</p>	<p>Specification:</p> <p>Installation of One (1) unit Data Cabinet with specifications of 600 x 450, 9u/1.5Ft. 90.7kg max. loading capacity), toughed glass door w/ spring</p>	<p>Specification:</p> <p>Installation of One (1) unit Data Cabinet with specifications of 600 x 450, 9u/1.5Ft. 90.7kg max. loading capacity), toughed glass door</p>



References based on the OBD / Pre-Bid Conference / Site Inspection	Description based on the OBD / Queries	New description / Clarification
Electrical room located at the RFS Office)	lock, detachable side panel (not vented), 2 pcs. Exhaust fan w/ cable entry at the top panel, 6 outlet PDU w/ 3.0mm cable length (220V,3prong,10A), powder coated finish, with exhaust fans at the Electrical room located at the RFS Office area;	w/ spring lock, detachable side panel (not vented), 2 pcs. Exhaust fan w/ cable entry at the top panel, 6 outlet PDU w/ 3.0mm cable length (220V,3prong,10A), powder coated finish, with exhaust fans at the Electrical room located at the RFS Office area; with provision of 1KVA UPS Floor/Wall Mount (4x Universal Outlets, Cable Length: 1.20 meters, Rated Power: 600 Watts, Height x Width x Depth: 9.25 x 16.05 x 30.5 cm
OBD page 30, item No.1.28 of (Section VII. Technical Specifications) Area 1 (Data Cabinet Installation at Electrical room located at the RFS Office)	Specification: Installation, testing, and commissioning of Two (2) Smart PoE Managed Switch to the Data Cabinet	Specification: Installation, testing, and commissioning of One (1) Smart PoE Managed Switch to the Data Cabinet
OBD page 31, item No.1.28 of (Section VII. Technical Specifications) Area 1 (Data Cabinet Installation at Electrical room located at the Workshop Area)	Specification: Installation, testing, and commissioning of Two (2) Smart PoE Managed Switch to the Data Cabinet	Specification: Installation, testing, and commissioning of One (1) Smart PoE Managed Switch to the Data Cabinet
OBD page 31, item No.1.30 of (Section VII. Technical Specifications) Area 1 (Data Cabinet Installation at	Specification: Installation of One (1) unit Data Cabinet with specifications of 600 x 450, 9u/1.5Ft. 90.7kg max. loading capacity), toughed glass door w/ spring	Specification: Installation of One (1) unit Data Cabinet with specifications of 600 x 450, 9u/1.5Ft. 90.7kg max. loading capacity), toughed glass door



References based on the OBD / Pre-Bid Conference / Site Inspection	Description based on the OBD / Queries	New description / Clarification
<p>Electrical room located at the Workshop Area)</p>	<p>lock, detachable side panel (not vented), 2 pcs. Exhaust fan w/ cable entry at the top panel, 6 outlet PDU w/ 3.0mm cable length (220V,3prong,10A), powder coated finish, with exhaust fans at the Electrical room located at the RFS Office area;</p>	<p>w/ spring lock, detachable side panel (not vented), 2 pcs. Exhaust fan w/ cable entry at the top panel, 6 outlet PDU w/ 3.0mm cable length (220V,3prong,10A), powder coated finish, with exhaust fans at the Electrical room located at the Workshop Area; with provision of 1KVA UPS Floor/Wall Mount (4x Universal Outlets, Cable Length: 1.20 meters, Rated Power: 600 Watts, Height x Width x Depth: 9.25 x 16.05 x 30.5 cm</p>
<p>OBD page 27-28, item No.1.05 of (Section VII. Technical Specifications) Data Cabinets</p>	<p>Query: Upon checking of the OBD, there's only three (3) data cabinets included in the OBD. These are installed at PABX Room, Workshop Area, and RFS Office (Electrical Room). Where is the location of fourth data cabinet?</p>	<p>Specification:</p> <ul style="list-style-type: none"> •Data Cabinet will be installed in the following areas: <ol style="list-style-type: none"> 1) PABX Room (28U / 4 feet Data Cabinet); 2) Workshop Electrical Room (9U / 1.5 feet Data Cabinet); 3) Electrical Room at RFS Office (9U / 1.5 feet Data Cabinet); and 4) Basement Electrical Room (12U / 2 feet Data Cabinet) •(9U, 12U, & 28U) 19" standard opening; Framing and Paneling Gauge#16, Black (powder-coated); Adjustable with mounting railings; Plexiglas Front Door with Lock; •Detachable Side Panels with Lock and ventilation;



References based on the OBD / Pre-Bid Conference / Site Inspection	Description based on the OBD / Queries	New description / Clarification
		<p>Detachable Back Panels with Lock; With 1-unit Vertical powerstrip 4 CO's, 3 prong, 220V, 20 Amp fuse; With 1-unit Vertical Cable Manager at the back ring type; and with 4 pcs. Exhaust Fan at the top panel</p> <ul style="list-style-type: none"> • with Warranty
Pre-Bid Conference	<p>Query during Pre-Bid Conference:</p> <p>If one of the requirements for the project is PCAB License?</p>	<p>TWG Reply during Pre-Bid Conference:</p> <p>BAC EU Rep. Engr. AAMJimenez answered that this project is classified under Goods, therefore there is no need for a PCAB License.</p> <p>Note: Under the Revised IRR of RA9184, see Section 23. Eligibility Requirements for the Procurement of Goods and Infrastructure Projects</p>
Pre-Bid Conference	<p>Query during Pre-Bid Conference:</p> <p>For clarification regarding with the Checklist item no. 9 re: Certificate of Distribution and Service, what does it mean?</p>	<p>TWG Reply during Pre-Bid Conference:</p> <p>"The Certificate of Distribution and Service certifies a company as either a Distributor or a Service Provider with the capability to install specific equipment, such as CCTV systems."</p>
Pre-Bid Conference	<p>Query during Pre-Bid Conference:</p> <p>In regards with the Company Profile with the list of clients, do we need to provide the projects that we have done with them?</p>	<p>TWG Reply during Pre-Bid Conference:</p> <p>If you can provide the names of the project, much better for the TWG's reference for verification. If ever it is a bulk,</p>



References based on the OBD / Pre-Bid Conference / Site Inspection	Description based on the OBD / Queries	New description / Clarification
		kindly range it as a simplified list as long as it is related with the project.
Pre-Bid Conference	Query during Pre-Bid Conference: Regarding with the existing units, do we need to care off the dismantling of cablings?	TWG Reply during Pre-Bid Conference: Yes.
Pre-Bid Conference	Query during Pre-Bid Conference: In regards with the item "1.4 UPS Power Supply", which type is your requirement? Is it Rack Type or Tower Type?	TWG Reply during Pre-Bid Conference: Our requirement is Rack Tower Convertible.
Site Inspection	Query: There are 73 units of CCTV Camera will be subject for replacement, but there are 78 units of CCTV Camera in the Summary of CCTV Locations, Views, and Number. Where is 5 units of CCTV Camera?	TWG Reply: Five (5) units of CCTV cameras will be "retained", and these are located, and numbered as follows: <ol style="list-style-type: none">1) Gallery Hallway (#63)2) Gallery Inside 1 (#64)3) Gallery Inside 2 (#65)4) Gallery Inside 3 (#66)5) PABX (#67) Conduit Piping, UTP Cabling Installation (Two Runs per CCTV Camera), and the integration of this camera into the new IP CCTV System are included in this project.

Note: The Specifications are the minimum standards. The Bidders may submit higher or better specifications.

**Reminder to Bidders:**

1. Prospective Bidders may obtain further information from DAP and inspect the Bidding Documents at the address given below from Monday to Friday, **9:00AM to 4:30PM**.
2. A complete set of Official Bidding Documents (OBD) may be acquired by interested Bidders until **10 November 2023 (Fri)** from 09:00AM to 04:30PM, of the non-refundable applicable fee for the Bidding Documents, pursuant to the latest Guidelines issued by the GPPB, the cost for the Official Bidding Documents is **THREE THOUSAND FIVE HUNDRED PESOS (P3,500.00)**.

It may also be downloaded free of charge from the website of the Philippine Government Electronic Procurement System (PhilGEPS) and the website of the DAP. In order for bidders to participate, they shall pay the cost of the OBD not later than the scheduled Submission and Opening of the Bids.

3. Interested bidders must make payment to:

Account Name:	Development Academy of the Philippines
Account Number:	0671-0105-40
Bank:	Landbank of the Philippines
Branch of Account:	Pasig Capitol Branch

A copy of proof of payment must be emailed to DAP's Finance Department at: **cashtreasury@dap.edu.ph** for the issuance of Official Receipt (OR) and the BAC Secretariat will provide assistance to the On-line Bidder for the creation of "bidms account" and dedicated site in the **bidms.dap.edu.ph**.

4. In compliance with GPPB Resolution No. 12-2020, all electronic-Bids must be duly received by the Bids and Awards Committee (BAC) Secretariat, through the designated bidms.dap.edu.ph secured account on or before **November 14, 2023 (Tue)** and not later than **10:00AM**. All bids must be accompanied by a bid security in any of the acceptable forms and in the amount stated in **ITB Clause 14**.
5. Bid opening shall be on **November 14, 2023 (Tue)** at **10:00AM** via Google Meet Platform. Electronic bids will be opened in the presence of the bidders' authorized representative/s who are authorized to attend the proceedings. **LATE BIDS SHALL NOT BE ACCEPTED.**
6. The **DAP** reserves the right to reject any and all bids, declare a failure of bidding, or not award the contract at any time in accordance with the provisions of RA 9184 and its IRR, without thereby incurring any liability to the affected bidder or bidders.



7. For further information, please refer to:

MARIET RIZ M. BRADECINA

Manager, BAC Secretariat Division (SO-2023-094)

DEVELOPMENT ACADEMY OF THE PHILIPPINES

GF DAP Bldg., San Miguel Avenue, Pasig City 1600

P.O. Box 12788 Ortigas Center, Pasig City 1600 Philippines

Telephone No. : (632) 8631-0921 loc. 133

BAC Secretariat email : dapbacsec@dap.edu.ph

Website address : <http://www.dap.edu.ph>

8. You may visit the following websites:

For downloading of Official Bidding Documents: <https://www.dap.edu.ph/invitation-to-bid/>

For online bid submission: <http://bidms.dap.edu.ph/page/>

For the guidance and information of all concerned.

ALAN S. CAJES

CHAIRPERSON, BIDS & AWARDS COMMITTEE 2 (SO No.2023-047)

>>>NOTHING FOLLOWS<<<



**ANNEX “A” – REVISED
TECHNICAL SPECIFICATIONS
(AS PER BID BULLETIN No.1)**

DATE OF ISSUE

**20 October
2023 (Friday)**

PAGE NUMBER

p.1/28

Bidder's LETTERHEAD

FORM 10 : TECHNICAL SPECIFICATIONS COMPLIANCE

Instructions: Bidders must state here either “Comply” or “Not Comply” against each of the individual parameters of each Specification stating the corresponding performance parameter of the equipment offered. Statements of “Comply” or “Not Comply” must be supported by evidence in a Bidders Bid and cross-referenced to that evidence. Evidence shall be in the form of the manufacturer’s un-amended sales literature, unconditional statements of specification and compliance issued by the manufacturer, samples, independent test, data etc., as appropriate. A statement that is not supported by evidence or is subsequently found to be contradicted by the evidence presented will render the Bid under evaluation liable for rejection. A statement either in the Bidder's statement of compliance or the supporting evidence that is found to be false either during Bid evaluation, post-qualification or the execution of the Contract may be regarded as fraudulent and render the Bidder or supplier liable for prosecution.

Item	Specification	Qty	unit	Statement of Compliance
HARDWARES				
1.01 Dome IP Camera	Supply and installation of Dome IP CCTV Camera: <ul style="list-style-type: none">• 1/3 in. 4MP Progressive-scan CMOS Sensor• Triple-stream Encoding• Smart H.265+ and Smart H.264+ Dual Codec• 4MP (2688 × 1520) @30 fps, 2.8, Fixed Lens• Starlight Technology for Low-light Applications• Analytics+ Function –Perimeter Protection and Smart Motion Detection• True Wide Dynamic Range (120 dB) and Day/Night IR Cut Filter• Enhanced Power and Data Transmission Distances (ePoE)• Arctic Pro Series Camera – Operational down to -40deg C(-40deg F)• IP67 Ingress Protection and IK10 Vandal Resistance• with Warranty	52.00	pcs	
1.02 Bullet IP Camera	Supply and installation of Bullet IP CCTV Camera: <ul style="list-style-type: none">• 5MP (2592 × 1944) @20 fps, 1/2.7" image sensor, 24/7 Full-color image• SMART H.264+/H.265+, AI	21.00	pcs	



**ANNEX “A” – REVISED
TECHNICAL SPECIFICATIONS
(AS PER BID BULLETIN No.1)**

DATE OF ISSUE

PAGE NUMBER

**20 October
2023 (Friday)**

p.2/28

	<ul style="list-style-type: none"> H.264/H.265 encoding • 2.8/3.6 mm fixed lens • Built-in warm light and IR LED; the max. IR illumination distance is 30m • Smart Dual Illumination Active Deterrence: Sound and light alarm • Support vehicle and human classification • Intelligent detection: Intrusion, tripwire • 12V DC/PoE power supply • IP67 protection • with Warranty 			
1.03 Smart POE Unmanaged Data Switch	<p>Supply and installation of 24 port Smart POE Unmanaged Data Switch:</p> <ul style="list-style-type: none"> • Smart POE Unmanaged Data Switch (The next generation Smart switch, provides 24ports – 24 10/100/1000Base-T POE ports, 4SFP optical ports, support IEEE 802.3af/ at power supply standard, single port maximum output PoE power 30W, 370W max output PoE power, support unified/ centralized management, lifetime license); • Combo PoE Switch • Interface: Combo 1000BASE-T/SFP port x 110/100 Base-T x16 (Hi PoE/PoE+/PoE) PoE budget : 135W Dimension: 340mm x200mm x43mm CCTV monitor mode, VLAN isolation mode • with Warranty 	6.00	pcs	
1.04 64 Channel Network Video Recorder	<p>Supply and installation of Two (2) 64 Channel Network Video Recorder:</p> <ul style="list-style-type: none"> • Smart H.265+/Smart H.264+/H.265/H.264 • support 64-ch IPC inputs, max resolution 12MP • 320Mbps input Bandwidth • Support 16-ch 1080p@30 fps self-adaptive decoding ability • 8 SATA III ports, up to 10 TB for a single HDD • 2 VGA, 2 HDMI, 2 RJ45(1000M) • Supports ONVIF protocol, DHCP, P2P function • 1-channel fisheye dewarping (AI by NVR) • AI by Camera: Perimeter protection; 	2.00	pcs	



**ANNEX “A” – REVISED
TECHNICAL SPECIFICATIONS
(AS PER BID BULLETIN No.1)**

DATE OF ISSUE

PAGE NUMBER

**20 October
2023 (Friday)**

p.3/28

	<ul style="list-style-type: none"> face detection and recognition; SMD Plus; video metadata; ANPR; people counting; heat map with Warranty 			
1.05 Data Cabinet	<p>Supply and installation of Data Cabinet:</p> <ul style="list-style-type: none"> Data Cabinet will be install at the following areas: <ul style="list-style-type: none"> ✓ PABX Room (28U / 4 feet Data Cabinet); ✓ Workshop Electrical Room (9U / 1.5 feet Data Cabinet); ✓ Electrical Room at RFS Office (9U / 1.5 feet Data Cabinet); and ✓ Basement Electrical Room (12U / 2 feet Data Cabinet) (9U, 12U, & 28U) 19" standard opening; Framing and Paneling Gauge#16, Black (powder-coated); Adjustable with mounting railings; Plexiglas Front Door with Lock; Detachable Side Panels with Lock & Ventilation; Detachable Back Panels with Lock; With 1 unit Vertical powerstrip 4 CO's, 3 prong, 220V, 20 Amp fuse; With 1 unit Vertical Cable Manager at the back ring type; and with 4 pcs. Exhaust Fan at the top panel with Warranty 	4.00	pcs	
1.06 10TB Hard Disk Drive	<ul style="list-style-type: none"> 10TB Surveillance Hard Disk Drive SATA III; with Warranty 	16.00	pcs	
1.07 Fiber Patch Cable End to End (300M)	<ul style="list-style-type: none"> LC with Standard Boots; LC 12mm/18mm with Short Boots; SC 25mm with Short Boots Polish Type SMF: UPC-UPC; UPC-APC; APC-APC; MMF: UPC-UPC Connector Ferrule Zirconia Ceramic Cable Outside Diameter Duplex: 1.6/2.0/3.0mm, Simplex: 0.9/2.0/3.0mm, Interchangeability ≤0.2dB, Vibration ≤0.2dB with Warranty 	1.00	roll	
1.08 Fiber Optical Module	<ul style="list-style-type: none"> Single mode single fiber; LC port; 1310nm sending, and 1550nm receiving; Transmission distance up to 20km; with Warranty 	6.00	pcs	
1.09 55" LED 4K Monitor	<ul style="list-style-type: none"> 55" 4K UHD LED Monitor; Industrial level LCD panel, suitable 	2.00	pcs	



ANNEX “A” – REVISED
TECHNICAL SPECIFICATIONS
(AS PER BID BULLETIN No.1)

DATE OF ISSUE

PAGE NUMBER

**20 October
2023 (Friday)**

p.4/28

	<ul style="list-style-type: none"> for continuous 24/7 operation • 4K Ultra-HD resolution • Using tamper-proof metal housing • Built-in 3D COMB filter and 3D noise reduction • 6ms response time for no motion blur or ghosting • 1.07G colors, for a realistic and immersive visual experience • High-fidelity digital processing • 178°/178° wide uninterrupted viewing angle • With Bracket • with Warranty 			
1.10 Fiber Patch Panel	<ul style="list-style-type: none"> • Category 6 180° 1U 24-Port Unshielded Patch Panel, Dual Type IDC, W/ Two Cable Management Bars, Black; • with Warranty 	6.00	pcs	
1.11 Fiber Patch Cord	<ul style="list-style-type: none"> • LC/UPC – SC/UPC Duplex Single mode, • 9/125 Patch Cord 2M,2.0mm, LSOH; • with Warranty 	80.00	pcs	
1.12 UTP CAT6 Cable	<ul style="list-style-type: none"> • Supply & Installation of Universal Twisted Pair (UTP) Category 6 (CAT 6) Cable, 305 meter or 1000 ft. per box; • with Warranty 	1	lot	
1.13 LC Pigtail	<ul style="list-style-type: none"> • Multimode OM3 Simplex 1M, 4.0 mm, LSOH; • with Warranty 	25.00	pcs	
1.14 Smart-UPS Power Supply	<ul style="list-style-type: none"> • Supply & Installation of High frequency, On-line Smart UPS, Rack-Tower Convertible, Hot-Swappable Battery Module Design, • 3KVA/2.7 KW, PF: 0.9, 72Vdc, with 6pcs X 9Ah built-in battery, with USB, RS232, EPO, SNMP function Port • with Warranty 	1.00	pc	
1.15 RJ45	<ul style="list-style-type: none"> • Supply & Installation of RJ45 	1.00	lot	
1.16 Cable Manager	<ul style="list-style-type: none"> • 24 P, 1 U Cable Manager 	15.00	sets	
ROUGHING-IN INSTALLATION MATERIALS				
1.17	<ul style="list-style-type: none"> • Supply, installation and termination of Fiber Optic 4 core multimode outdoor type 	1.00	Lot	
1.18	<ul style="list-style-type: none"> • Supply, installation and termination of conduits, structured cabling 	1.00	Lot	



**ANNEX “A” – REVISED
TECHNICAL SPECIFICATIONS
(AS PER BID BULLETIN No.1)**

DATE OF ISSUE

PAGE NUMBER

**20 October
2023 (Friday)**

p.5/28

	installation of UTP CAT 6 Cable and Fiber Optic Cable, cable trays around the Main Conference Building, and in the side of Connecting Hallway, cable pulling, CCTV Weatherproof Conduit Boxes (100X100X70) (73 pcs), fittings, boxes, support/hangers, connectors, accessories, testing, commissioning, and decommissioning.			
Area 1 (Data Cabinet Installation at PABX Room)				
1.19	Installation of Data Cabinet with height 28U / 4 ft., Powder Coated, Black, perforated two side panels, Perforated back, and front Door; German cooling fan, with three pins German type plug, 1wire,4 fans (cable length, 1M); 1U 19" power distribution unit, w/ aluminum body, US (NEMA5-15P) Plug, 6 universal outlets, w/LED master switch at PABX Room;	1.00	Lot	
1.20	Installation, testing, and commissioning of Two (2) Smart PoE Managed Switch, Two (2) Network Video Recorders, and Rackmount Smart-UPS power supply to the Data Cabinet;	1.00	Lot	
1.21	Wall installation, testing, and commissioning of Two (2) 55" LED 4K Monitors connected to NVR located at PABX Room;	1.00	Lot	
1.22	Installation of Roughing-Ins (cable trays, conduits and other necessary accessories).	1.00	Lot	
1.23	Supply, Installation, Cable Wiring Termination, Testing and Commissioning of New Electrical Panel Board with 1 pc. Main Circuit Breaker (100 Amperes) Bolt-On Type and 8 pcs. Branch Circuit Breakers Bolt-On Type (1 pc. 20 Amperes for the Lighting Circuits, 1 pc. 30 Amperes for the Air Conditioning Unit, 1pc. 30 Amperes for the Convenience Outlets, 1 pc. 40 Amperes for the UPS of the existing IT Network Infrastructure, 1pc. 40 Amperes or higher for the UPS of CCTV Surveillance System, other 3 pcs. 20 Amperes Circuit Breaker for Spare Provisions)	1.00	Lot	
Area 2 (Lower Lobby Electrical and Mechanical Room IP CCTV Positions)				



**ANNEX "A" – REVISED
TECHNICAL SPECIFICATIONS
(AS PER BID BULLETIN No.1)**

DATE OF ISSUE

PAGE NUMBER

**20 October
2023 (Friday)**

p.6/28

1.24	Installation of Roughing-Ins (cable trays, conduits and other necessary accessories)	1.00	Lot	
1.25	Installation of Two (2) units of Indoor Dome IP CCTV Cameras at the Mechanical Room and Electrical Room Entrance;	1.00	Lot	
1.26	Wire Pulling, Laying, and Structured cabling from Smart PoE Network Switch at PABX room (for IP CCTV Cameras) to Mechanical and Electrical Room located at the Lower lobby (Camera No. 74 & 75) based on Floor Plan/ Layout. (See attached plan/ layout)	1.00	Lot	
Area 3 (Data Cabinet Installation at Electrical room located at the RFS Office)				
1.27	Installation of One (1) unit Data Cabinet with specifications of 600 x 450, 9u/1.5Ft. 90.7kg max. loading capacity), toughed glass door w/ spring lock, detachable side panel (not vented), 2 pcs. Exhaust fan w/ cable entry at the top panel, 6 outlet PDU w/ 3.0mm cable length (220V,3prong,10A), powder coated finish, with exhaust fans at the Electrical room located at the RFS Office area; with provision of 1KVA UPS Floor/Wall Mount (4x Universal Outlets, Cable Length: 1.20 mtrs, Rated Power: 600 Watts, HxWxD: 9.25 x 16.05 x 30.5 cm	1.00	Lot	
1.28	Installation, testing, and commissioning of One (1) Smart PoE Managed Switch to the Data Cabinet;	1.00	Lot	
1.29	Installation of Roughing-Ins (cable trays, conduits and other necessary accessories).	1.00	Lot	
Area 4 (Data Cabinet Installation at Electrical room located at the Workshop Area)				
1.30	Installation of One (1) unit Data Cabinet with specifications of 600 x 450, 9u/1.5Ft. 90.7kg max. loading capacity), toughed glass door w/ spring lock, detachable side panel (not vented), 2 pcs. Exhaust fan w/ cable entry at the top panel, 6 outlet PDU w/ 3.0mm cable length (220V,3prong,10A), powder coated finish, with exhaust fans at the Electrical room located at the Workshop Area; with provision of 1KVA UPS Floor/Wall Mount (4x Universal Outlets, Cable Length: 1.20 mtrs, Rated Power: 600 Watts, HxWxD: 9.25 x 16.05 x 30.5	1.00	Lot	



ANNEX “A” – REVISED
TECHNICAL SPECIFICATIONS
(AS PER BID BULLETIN No.1)

DATE OF ISSUE

PAGE NUMBER

**20 October
2023 (Friday)**

p.7/28

	cm			
1.31	Installation, testing, and commissioning of One (1) Smart PoE Managed Switch to the Data Cabinet.	1.00	Lot	
Area 5 (Dining and Basement Left-wing and Right-wing area, Engineering and Parking area IP CCTV Positions)				
1.32	Installation of Roughing-Ins (cable trays, conduits and other necessary accessories);	1.00	Lot	
1.33	Installation of Seventeen (17) units of Indoor Dome IP CCTV Cameras and Eight (8) Outdoor Bullet IP CCTV Cameras;	1.00	Lot	
1.34	Wire Pulling, Laying, and Structured cabling from Smart PoE Network Switch at Electrical room located at Dining lobby of two (2) runs each UTP Cable (for IP CCTV Cameras) to Dining Area (No. 70, 47, 48, 49, 71, 46, 53, 68, 54), and to Basement Area (No. 45, 44, 43, 42, 40, 61,41) based on Floor Plan/ Layout. (See attached plan/ layout);	1.00	Lot	
1.35	Another Wire Pulling, Laying, and Structured cabling from Smart POE Network Switch at Electrical room located at Dining lobby of two (2) runs each UTP Cable (for IP CCTV Cameras) to Engineering, Staff lounge and Side Parking area (No. 55, 56, 59, 69, 72, 73, 76, 77, 78) based on Floor Plan/ Layout. (See attached plan/ layout);	1.00	Lot	
1.36	Conduction of Wire Termination/s along with appropriate Testing & Commissioning and De-commissioning of old wires and hardware.	1.00	Lot	
Area 6 (2nd-floor and 3rd floor Left-wing and Right-wing IP CCTV Positions)				
1.37	Installation of Roughing-Ins (cable trays, conduits and other necessary accessories);	1.00	Lot	
1.38	Installation of Fifteen (15) units of Indoor Dome IP CCTV Cameras;	1.00	Lot	
1.39	Wire Pulling, Laying, and Structured cabling from Smart PoE Network Switch at Electrical room located at Dining lobby of two (2) runs each UTP Cable (for IP CCTV Cameras) to 2nd floor Area (No. 24, 33, 34, 35, 36, 37, 38, 39), and to 3rd floor Area (No. 26, 27, 28, 29, 30, 31, 32) based on Floor Plan/ Layout. (See attached plan/ layout);	1.00	Lot	
1.40	Conduction of Wire Termination/s along	1.00	Lot	



**ANNEX “A” – REVISED
TECHNICAL SPECIFICATIONS
(AS PER BID BULLETIN No.1)**

DATE OF ISSUE

PAGE NUMBER

**20 October
2023 (Friday)**

p.8/28

	with appropriate Testing & Commissioning and De-commissioning of old wires and hardware.			
Area 7a (Upper Lobby and Function Room Area IP CCTV Positions)				
1.41	Installation of Roughing-Ins (cable trays, conduits and other necessary accessories);	1.00	Lot	
1.42	Installation of Thirteen (13) units of Indoor Dome IP CCTV Cameras and Five (5) Outdoor Bullet IP CCTV Cameras;	1.00	Lot	
1.43	Wire Pulling, Laying, and Structured cabling from Smart PoE Network Switch at Electrical room located in front of Workshop Male CR of two (2) runs each UTP Cable (for IP CCTV Cameras) to Upper lobby and Function room Area (No.1, 9, 10, 11, 12, 13, 14, 15, 16, 17, 18, 19, 20, 21, 22, 23, 25, 52) based on Floor Plan/ Layout. (See attached plan/ layout);	1.00	Lot	
1.44	Conduction of Wire Termination/s along with appropriate Testing & Commissioning and De-commissioning of old wires and hardware.	1.00	Lot	
Area 7b (Upper Lobby and Function Room Area IP CCTV Positions)				
1.45	Installation of Roughing-Ins (cable trays, conduits and other necessary accessories);	1.00	Lot	
1.46	Installation of Two (2) units of Indoor Dome IP CCTV Cameras and Two (2) Outdoor Bullet IP CCTV Cameras;	1.00	Lot	
1.47	Wire Pulling, Laying, and Structured cabling from Smart PoE Network Switch located at PABX of two (2) runs each UTP Cable (for IP CCTV Cameras) to Upper lobby and Function room Area (No.7, 8, 50, 51) based on Floor Plan/ Layout. (See attached plan/ layout);	1.00	Lot	
1.48	Conduction of Wire Termination/s along with appropriate Testing & Commissioning.	1.00	Lot	
Area 8 (Lower Lobby and Side Parking Area IP CCTV Positions)				
1.49	Installation of Roughing-Ins (cable trays, conduits and other necessary accessories);	1.00	Lot	
1.50	Installation of Five (5) units of Indoor Dome IP CCTV Cameras and Four (4) Outdoor Bullet IP CCTV Cameras;	1.00	Lot	
1.51	Wire Pulling, Laying, and Structured cabling from Smart PoE Network Switch	1.00	Lot	



**ANNEX “A” – REVISED
TECHNICAL SPECIFICATIONS
(AS PER BID BULLETIN No.1)**

DATE OF ISSUE

PAGE NUMBER

**20 October
2023 (Friday)**

p.9/28

	located at PABX of two (2) runs each UTP Cable (for IP CCTV Cameras) to Upper lobby and Function room Area (No.2, 3, 4, 5, 6, 57, 58, 60, 62) based on Floor Plan/ Layout. (See attached plan/layout);			
1.52	Conduction of Wire Termination/s along with appropriate Testing & Commissioning.	1.00	Lot	
General Requirements				
1.53	Mobilization of Manpower, equipment, tools, and temporary facilities. Provide temporary field office with health/safety/first aid facility and utilities with corresponding sub-meters to be connected to supply of water and electricity. Provide Personal Protective Equipment (PPE) and other Safety & Health Paraphernalia.	1.00	Lot	
1.54	Obtain building permits, and other necessary permits such as Electronic and/or Electrical Permits as required for the project;	1.00	Lot	
1.55	Supply and deliver all devices needed to install the upgraded CCTV System such as but not limited to: IP CCTV Cameras, Network Video Recorder, Wires and Cables, Data Switches, Monitors, Hard Disk Drives, etc.;	1.00	Lot	
1.56	Install piping, structured cabling, cable trays, hangers, base mountings, cabinets, accessories, CCTV devices such as cameras and video recorder, etc. in accordance to correct engineering standards and material specifications as cited in its operating manual;	1.00	Lot	
Turn-Over and Acceptance				
1.57	End to End Termination, Testing including Fluke testing and Optimal Time-Domain Reflectometer (OTDR) & Commissioning, Fiber Optics, Networking, Fiber Optic Cable Design, and Installation, Fiber Termination and Fusion Splicing (FOC Fusion Machine), FOC Patch Panel Splicing, and Termination, Continuity Testing Power source and Light Meters Configuration, Installation / termination and adjustment, and Programming, Decommissioning and Turn-over of all	1.00	Lot	



**ANNEX “A” – REVISED
TECHNICAL SPECIFICATIONS
(AS PER BID BULLETIN No.1)**

DATE OF ISSUE

PAGE NUMBER

**20 October
2023 (Friday)**

p.10/28

	identified obsolete CCTV Cameras, Cablings, and other accessories, and system integration and configuration of existing CCTV System at Cottages (via internet/data connection) for the entire IP CCTV system. Repair of three (3) identified CCTV units at Cottages. Supply and installation of 4+2 100 Mbps Long-Range PoE Switch (Model: WI-PS205H).			
1.58	Clean and restore the areas affected during and after the installation and testing including rectification/correction of punch-listed items;	1.00	Lot	
1.59	Demobilization. Dismantling of temporary facilities, pullout of debris resulting from the conduct of the works	1.00	Lot	
1.60	The Contractor/Supplier shall provide a quarterly preventive maintenance checkup, free of charge for at least one year after the system has been commissioned and accepted by DAP;	1.00	Lot	
1.61	Submission of Post Documentary requirements: <ul style="list-style-type: none">• Original Copy of “Record Drawings/Plans” complete with legend, technical specifications, and measurements;• Compilation of Periodic Project Reports including photo documentations before, during, and after implementation works. Each photo-documentation should have the date and time stamps, in jpg-format;• As-Built Plans:<ul style="list-style-type: none">✓ Six (6) set of original copy in 30” x 40” sheets (drawn on a mylar sheets) signed and sealed by appropriate professional and/or engineers;✓ Six (6) sets of blue print copies in 30” x 40” sheets signed and sealed by appropriate professional architects and engineers; and✓ Complete set of electronic files in USB Thumb Drive of “AS-BUILT PLANS” in PDF and CAD format.	1.00	Lot	



**ANNEX “A” – REVISED
TECHNICAL SPECIFICATIONS
(AS PER BID BULLETIN No.1)**

DATE OF ISSUE

PAGE NUMBER

**20 October
2023 (Friday)**

p.11/28

	<ul style="list-style-type: none">• Manuals of all supplied and installed equipment comprising the Technical Specifications and Product Installation Instructions;• Operational Brochure/s;• Maintenance Manuals, including draft of Process and Work Instruction Manual (PAWIM) for the use of DAPCC Maintenance Personnel;• Conduct training of the DAP maintenance personnel who will operate and maintain all equipment, facilities and utilities installed; and• Warranty Certificate that complies to the GCC Clause 5 Warranty under Section V Special Conditions of Contract			
--	--	--	--	--



ANNEX "A" – REVISED TECHNICAL SPECIFICATIONS (AS PER BID BULLETIN No.1)

DATE OF ISSUE

PAGE NUMBER

20 October
2023 (Friday)

p.12/28



DAPCC PROPOSED CCTV LOCATION, VIEW AND NUMBER

Revised as of May 23, 2025

Sl. No.	Location	Area (based on Floor Plan)	Description of View	Nature of Action			Camera Type (to upgrade & additional)	Remarks
				(Existing) Camera for Upgrade/Replace	Monitor	New Location (Additional)		
1	Main Gate / Guard House	Upper	Main gate, guard house, & LSP-ATM. Camera should have capability to zoom in with high-res.	1			4mp bullet	
2	Lower Lobby Driveway	Lower	Driveway, incoming vehicle/s.	1			4mp bullet	
3	Lower Lobby 1 Entrance	Lower	Lower lobby stairs & Audi Main Floor.	1			4mp dome	
4	Lower Lobby 2 Entrance	Lower	Lower lobby, & entrance. Camera at Lower Lobby Stairs.			1	4mp dome	
5	Auditorium 1	Lower	Floor area & stage. Upgrade the camera to wide-angle.	1			4mp dome	
6	Auditorium 2 (Stage - Left Side)	Lower	Main floor, main entrance, & side emergency exit. Camera unit is at the left side of the stage.			1	4mp dome	
7	Auditorium 3 (Balcony 1)	Upper	Balcony area. Camera unit will be mounted at the Ladies Comfort Room located at Balcony area.			1	4mp bullet	
8	Auditorium 4 (Balcony 2)	Upper	Balcony area. Camera unit will be mounted at the entrance.			1	4mp bullet	
9	Front Office	Upper	Upgrade the camera to wide-angle camera.	1			4mp dome	
10	Upper Lobby 1 (Entrance P.A. Side)	Upper	Upper lobby PA quarter left side, stairs from Auditorium & Upper Lobby Main Entrance.	1			4mp dome	
11	Upper Lobby 2 (Right Side)	Upper	Upper lobby right side - Prayer room area.	1			4mp dome	
12	Upper Lobby 3 (DAP Shop corner side)	Upper	Upper lobby corner of DAP Shop			1	4mp dome	
13	Upper Lobby 4 (Right Side Entrance)	Upper	Incoming people passing through the S-curve, and auditorium stage emergency exit.			1	4mp bullet	
14	Pathway outside/Side of conference 3-B	Upper	Pathway going to the S-curve pathway. Camera unit to be installed near the CR women side.			1	4mp bullet	
15	Workshop Area (Outside)	Upper	Camera Unit will be installed near Women CR at Workshop area			1	4mp bullet	
16	Cottage Rotunda	Upper	Cottage 7-8 rotunda & LPO area. Camera will be installed at the lease back wall of Conference area.			1	4mp bullet	
17	Workshop Hallway (Male CR Side)	Upper	Hallway from workshop male CR.	1			4mp dome	
18	Workshop Hallway (Female CR Side)	Upper	Hallway from workshop female CR.	1			4mp dome	
19	Conference 1 - 4 Hallway	Upper	Conference 1 to 4 hallway & partly include the door entrances.	1			4mp dome	
20	Conference 4 - 1 Hallway	Upper	Conference 4 to 1 hallway & partly include the door entrances.	1			4mp dome	
21	Admin Hallway	Upper	Office's (Cashier, OMC) & DSS) hallway and door entrances.	1			4mp dome	
22	OP to Conference 3 Hallway	Upper	Hallway in front of OP, FMSD, Conference 8 to 3.	1			4mp dome	
23	Conf 3-B Hallway	Upper	Hallway in front of Conference 8 to OP.	1			4mp dome	
24	Connecting Hallway 1	2nd & 3rd Floor	Connecting hallway from Guest bldg to Upper Lobby. Includes the glass doors fronting Barbeque Plaza B.	1			4mp bullet	
25	Connecting Hallway 2	Upper	Connecting hallway from Upper Lobby to Guest bldg. Includes the stairway going to roof deck.			1	4mp dome	



ANNEX "A" – REVISED TECHNICAL SPECIFICATIONS (AS PER BID BULLETIN No.1)

DATE OF ISSUE

PAGE NUMBER

20 October
2023 (Friday)

p.13/28



DAPCC PROPOSED CCTV LOCATION, VIEW AND NUMBER

Revised as of May 23, 2023

No.	Location	Area (based on Floor Plan)	Description of View	Nature of Action			Camera Type (Infrared & additional)	Remarks
				(Existing) Camera No./ Upgrade/ Replace	Additional	Area Location (additional)		
26	3 rd Floor Emergency Exit, Left Wing	2nd & 3rd Floor	Left hallway emergency exit stairway	1			4mp dome	
27	3 rd Floor Left Wing Hallway 1	2nd & 3rd Floor	Left hallway from water station, Housekeeping room 320 to 336.	1			4mp dome	
28	3 rd Floor Left Wing Hallway 2	2nd & 3rd Floor	Left hallway from water station, Housekeeping room 336 to 320.	1			4mp dome	
29	3 rd Floor Right Wing Hallway 1	2nd & 3rd Floor	Right hallway from Room 301 to 318.	1			4mp dome	
30	3 rd Floor Right Wing Hallway 2	2nd & 3rd Floor	Right hallway from Room 318 to 301.	1			4mp dome	
31	3 rd Floor Emergency Exit, Right Wing	2nd & 3rd Floor	Right hallway emergency exit stairway	1			4mp dome	
32	3rd Floor Middle Lobby	2nd & 3rd Floor	3rd floor Main lobby pointing to the stairs.			1	4mp dome	
33	2 nd Floor Left Wing Hallway 1	2nd & 3rd Floor	Left hallway from water station, RFS office to room 236.	1			4mp dome	
34	2 nd Floor Left Wing Hallway 2	2nd & 3rd Floor	Left hallway from 236 to water station and RFS Office.	1			4mp dome	
35	2 nd Floor Right Wing Hallway 1	2nd & 3rd Floor	Right hallway from Room 201 to 218.	1			4mp dome	
36	2 nd Floor Right Wing Hallway 2	2nd & 3rd Floor	Right hallway from Room 218 to 201.	1			4mp dome	
37	2 nd Floor Emergency Exit (Left Wing)	2nd & 3rd Floor	Left hallway emergency exit stairway.	1			4mp dome	
38	2 nd Floor Emergency Exit (Right Wing)	2nd & 3rd Floor	Right hallway emergency exit stairway.	1			4mp dome	
39	2 nd Floor Middle Lobby	2nd & 3rd Floor	2nd floor lobby stairs from connecting hallway, & dining floor.	1			4mp dome	
40	Basement 1 (101 - 106)	Basement & Dining	Hallway from 101-106. Camera will be installed near 101.			1	4mp dome	
41	Basement 2 Emergency Exit 106 - 101	Basement & Dining	Emergency exit at Basement Hallway 106 - 101.	1			4mp dome	
42	Basement 3 Lobby Right Corner	Basement & Dining	Dance room & lobby. Camera will be installed at the Right Corner of Basement Lobby	1			4mp dome	
43	Basement 4 Left Wing 107 - 118	Basement & Dining	Linen area & stockroom door. Hallway room 107 to 118.	1			4mp dome	
44	Basement 5 Left Wing 118 - 107	Basement & Dining	From Clinic area. Hallway room from 118 - 107			1	4mp dome	
45	Basement 6 (Clinic Area)	Basement & Dining	Clinic entrance and hallway going basement.	1			4mp dome	
46	Dining A Inside	Basement & Dining	Dining A area. Camera installed near the SBS office.	1			4mp dome	
47	Dining B Workshop 5 Side	Basement & Dining	Dining B floor area. Camera installed near workshop 5.			1	4mp dome	
48	Dining B Main Entrance	Basement & Dining	Dining B floor area to Workshop 5. Camera will be installed near the Dining B main entrance.	1			4mp dome	
49	Dining Lobby	Basement & Dining	Water's counter table, stairs going up to dorm area, CR entrance, Dining A area entrance.	1			4mp dome	
50	Barbeque Plaza B (Right)	Upper	Barbeque Plaza B right side. Connecting hallway steps, mechanical room outdoor entrance, and glass panels of art gallery. Camera will be installed at the side of guest room wing.			1	4mp bullet	
51	Barbeque Plaza B (Left)	Upper	Barbeque Plaza B left side. Camera will be installed at the side of Art Gallery, PASK, pointing at Dorm building and Dining B Side			1	4mp bullet	
52	Barbeque Plaza A	Upper	Back of conference 4 to dining A side entrance. Camera will be installed at the side of Conference Room 4.			1	4mp bullet	
53	Kitchen Entry Front	Basement & Dining	Side entrance (Bbque Plaza A side).	1			4mp bullet	



ANNEX "A" – REVISED TECHNICAL SPECIFICATIONS (AS PER BID BULLETIN No.1)

DATE OF ISSUE

PAGE NUMBER

20 October
2023 (Friday)

p.14/28



DA PCC PROPOSED CCTV LOCATION, VIEW AND NUMBER

Revised as of May 23, 2023

No.	Location	Area (based on Floor Plan)	Description of View	Nature of Action			Camera Type (Drill type & wireless)	Remarks
				(Existing) Camera for Upgrade/Replace	Wireless	New Location (addition)		
34	Kitchen Stockroom Area	Basement & Dining	Stockroom area hallway & entrances.			1	4mp drone	
35	Staff Lounge Area	Lower	Staff lounge & driveway. Camera should be wide angled.	1			4mp bullet	
36	EMS Office & W/Up Roadside	Lower	Road from EMS office, & DAPCC car parking area.	1			4mp bullet	
37	Parking A - Near Gate 2	Lower	Camera will be installed at Street light post pointing at Side Parking Area			1	4mp bullet	
38	Parking B - Near Gate 2	Lower	Camera will be installed at Street light post pointing at DAPCC front parking			1	4mp bullet	
39	Parking C - Near Clinic	Lower	Camera to be upgraded to 4mp bullet type pointing at Motorcycle Parking.			1	4mp bullet	
40	Parking D - Near Clinic	Lower	Camera to be installed at Wall post pointing at Side Parking.			1	4mp bullet	
41	Gym	Basement & Dining	Floor area of gym & entrances.			1	4mp drone	
42	Cashier	Lower	Inside new cashier's office, previously Business Center			1	4mp drone	
43	Gallery Hallway	Lower	Hallway & entrance of gallery, entrance of IT room & PADX.		1			to be maintained
44	Gallery Inside 1	Lower	National Artist Collection area		1			to be maintained
45	Gallery Inside 2	Lower	Gallery middle area side A		1			to be maintained
46	Gallery Inside 3	Lower	Gallery middle area side B		1			to be maintained
47	PADX	Lower	Floor area of PADX room & critical installations.		1			to be maintained
48	Kitchen Inside	Basement & Dining	Main Kitchen Area	1			4mp drone	
49	Driveway @ Engineering Office Area	Lower	Camera will be place @ the Engineering office pointing the driveway for incoming deliveries.	1			4mp bullet	
50	Emergency exit beside Workshop 5	Basement & Dining	Camera will be placed @ the side of Workshop 5/ Emergency exit.			1	4mp drone	
51	Dining A Entrance	Basement & Dining	Camera will be installed near the Dining A main entrance.			1	4mp drone	
52	Staff Lounge Inside	Lower	Camera is installed inside the Staff Lounge	1			4mp drone	
53	EMS Workstation (Generator Area)	Lower	Camera will be installed inside EMS Workstation pointing to the GenSet.			1	4mp bullet	
54	Electrical Room (Lower Lobby)	Lower (Mech. & Elect. Room)	Camera will be installed inside Electrical room at Lower Lobby area			1	4mp bullet	
55	Mechanical Room (Lower Lobby)	Lower (Mech. & Elect. Room)	Camera will be installed inside Mechanical room at Lower Lobby area			1	4mp bullet	
56	Sewage Treatment Plant (STP)	Lower	Camera will be installed at Utility Center pointing at STP.			1	4mp bullet	
57	Utility Center near Engineering Building	Lower	Camera will be installed at the Utility Center area.			1	4mp bullet	
58	Engineering Workshop area	Lower	Camera will be installed at Engineering workshop area.			1	4mp bullet	
59	Front Parking Driveway (Main Gate)	Cottage Area	Camera installed at Landbank ATM (Main Gate) pointing at Front Parking/ Flag pole		1			to be maintained
60	Cottage Driveway	Cottage Area	Camera installed at Landbank ATM pointing at Cottage Driveway		1			to be maintained
61	Cottage 5	Cottage Area	Camera installed at Cottage 5 pointing at Rotunda		1			to be maintained
62	Cottage 1 (Back Area)	Cottage Area	Camera installed at the back of Cottage 1 pointing at perimeter fence and Greenhouse.		1			to be maintained
63	Cottage 2 (Back Area)	Cottage Area	Camera installed at the back of Cottage 1 pointing at perimeter fence and back of Cottage 2		1			to be maintained



**ANNEX “A” – REVISED
TECHNICAL SPECIFICATIONS
(AS PER BID BULLETIN No.1)**

DATE OF ISSUE

PAGE NUMBER

**20 October
2023 (Friday)**

p.15/28



DAPCC PROPOSED CCTV LOCATION, VIEW AND NUMBER

Revised as of May 23, 2023

No.	Location	Area (based on Floor Plan)	Description of View	Nature of Action			Camera Type (If specified & added)	Remarks
				(Existing) Camera to Upgrade/Replace	Maintain	New Location (Added)		
01	Cottage 3 (Back Area)	Cottage Area	Camera installed at the back of Cottage 3 pointing at the back of Cottage 4 and Cottage Electrical and Data Room area.		1			to be maintained
02	Housekeeping Storage Room	Cottage Area	Camera installed at the side of Housekeeping storage room wall pointing at the back of Cottage 2 and Villa area.		1			to be maintained
03	Cottage 2 (Back Area)	Cottage Area	Camera installed at the back of Cottage 2 pointing at FBS ramp and LPG area		1			to be maintained
Total				41	13	32		86

total no. of cameras

Type of Camera to be Purchased	No. of Cameras
4mp Bullet Type Camera	26
4mp Dome Type Camera	47
Total No. of Cameras to be purchased:	73
No. of Cameras to be Maintained:	13

AREAS:	No. of Cameras
Upper	22
Lower	23
Lower (Mech. & Elect. Room)	2
Basement & Dining	10
2nd & 3rd Floor	15



ANNEX "A" – REVISED
TECHNICAL SPECIFICATIONS
(AS PER BID BULLETIN No.1)

DATE OF ISSUE

**20 October
 2023 (Friday)**

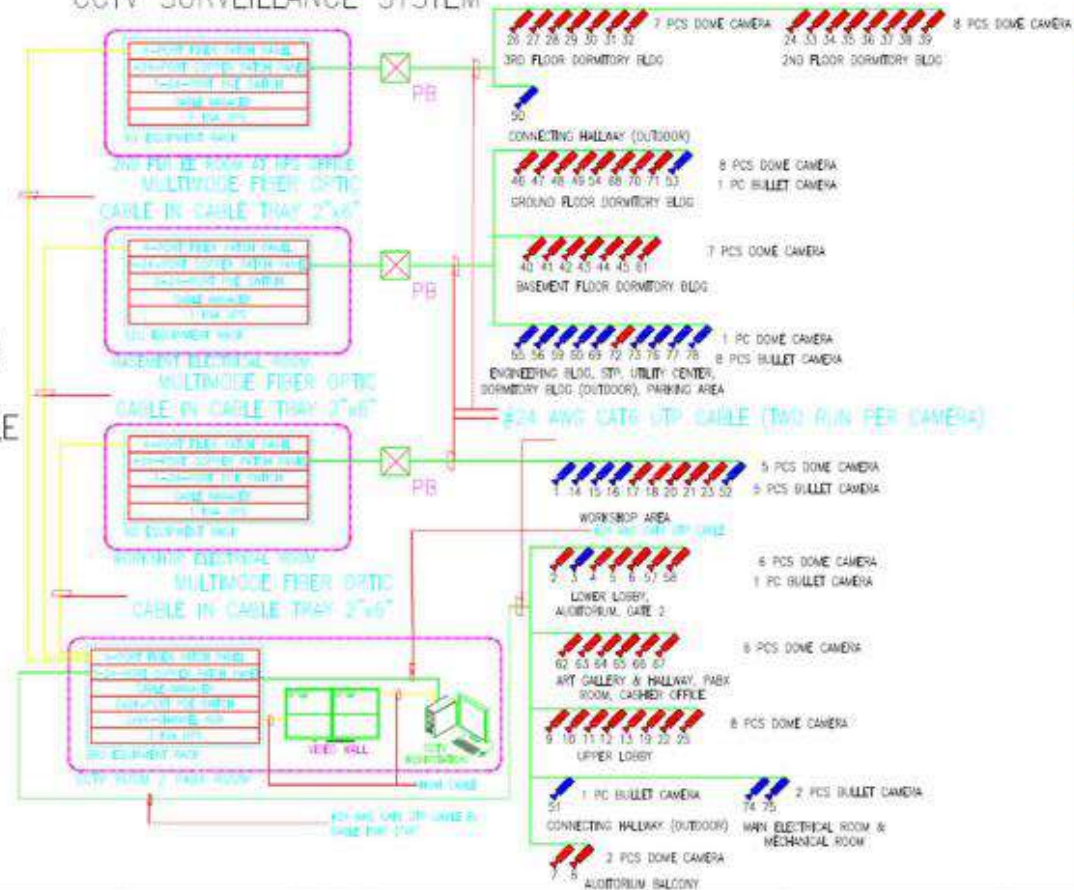
PAGE NUMBER

p.16/28

LEGEND:

- PULL BOX
- VIDEO WALL
- BULLET CAMERA
- DOME CAMERA
- NETWORK SWITCH
- FIBER OPTIC CABLE
- CAT 6 CABLE
- CABLE TRAY

**SINGLE LINE DIAGRAM FOR THE DAPCC
 CCTV SURVEILLANCE SYSTEM**



**DAPCC PROPOSED CCTV SURVEILLANCE
 SYSTEM LAYOUTS**

development academy of the philippines	PROJECT TITLE	DESIGN BY	RECOMMENDING APPROVAL BY:		APPROVED BY	SHEET CONTENT	SHEET NO.
	DAPCC CCTV SURVEILLANCE SYSTEM <small>2ND CONFERENCE CENTER, DAUITY OFF</small>	CHRISTIAN VER B. SOLIDENZA <small>ENGINEER</small>	ALBERTO ANGELO M. JIMENEZ <small>MANAGER</small>	PAG-ASA L. DOCELDO <small>TECHNICAL MANAGER</small>	MONINA AR. DE ARMAS <small>ENR. DIRECTOR</small>	SINGLE LINE DIAGRAM	1 13



**ANNEX "A" – REVISED
TECHNICAL SPECIFICATIONS
(AS PER BID BULLETIN No.1)**

DATE OF ISSUE

PAGE NUMBER

20 October
2023 (Friday)

p.17/28



3RD FLOOR DORMITORY BLDG

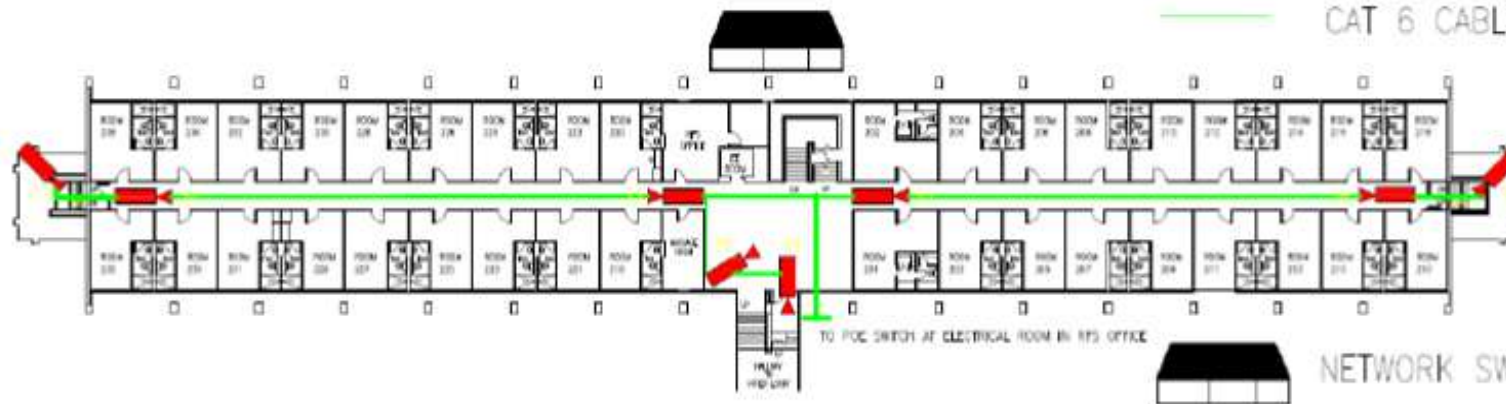
LEGEND:



DOME CAMERA



CAT 6 CABLE



2ND FLOOR DORMITORY BLDG



development academy of the
philippines

PROJECT TITLE	DESIGN BY	DESIGNER'S APPROVAL BY	APPROVED BY	SHEET CONTENT	SHEET NO.
DAPDC CCTV SURVEILLANCE SYSTEM (BY CONTRACT ITEM NO. 1049-01)	CHRISTIAN VER B. SIGLENZA DIRECTOR, DPOS	ALBERTO ANGELO M. JIMENEZ MANAGER, DPOS	PAC-RIA L. OCENIO ENGINEER, DPOS	WORKS AS DE ARMAS OFF. BRANCH	2 13

NETWORK SWITCH



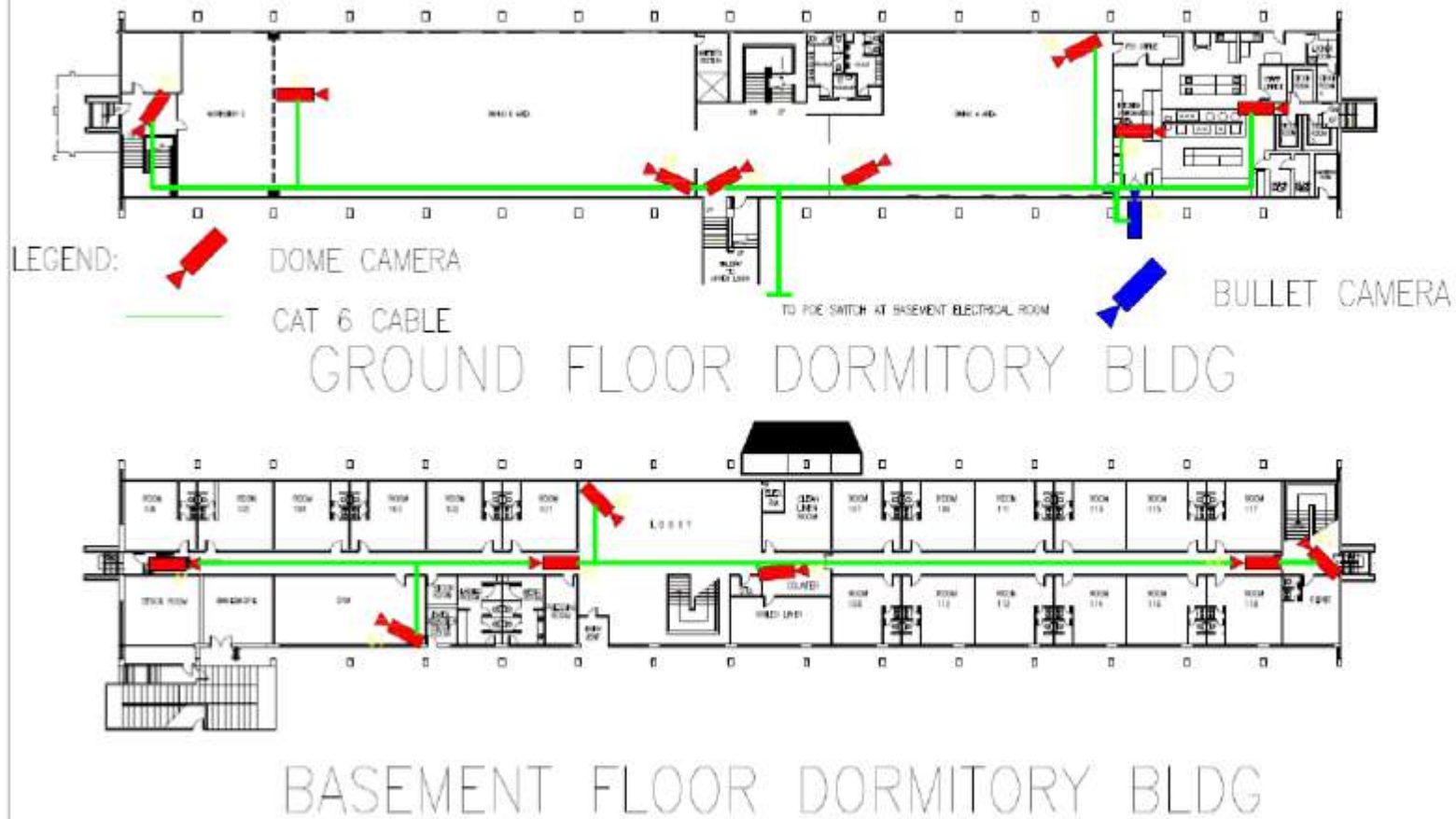
**ANNEX "A" – REVISED
TECHNICAL SPECIFICATIONS
(AS PER BID BULLETIN No.1)**

DATE OF ISSUE

PAGE NUMBER

**20 October
2023 (Friday)**

p.18/28



development academy of the
philippines

PROJECT TITLE	DESIGN BY	RECORDING APPROVAL BY	APPROVED BY	SHEET NUMBER	SHEET NO.
IMPROVE CITY SURVEILLANCE SYSTEM BY CONDUCTING WIRELESS CAMERA SET	CHRISTIAN VER D. SOLIZADA DESIGNER	ALBERTO ANGELO M. JANDRES ARCHITECT	PAC-ASA L. DOBLES REGISTERED ELECTRICAL ENGINEER	MORING OF DE BRINAS ELECTRICAL ENGINEER	GROUND & BASEMENT FLOOR (PROVIDED STRUCTURED CABLES & CITY POSITION)
					3 13



ANNEX "A" – REVISED TECHNICAL SPECIFICATIONS (AS PER BID BULLETIN No.1)

DATE OF ISSUE









PAGE NUMBER

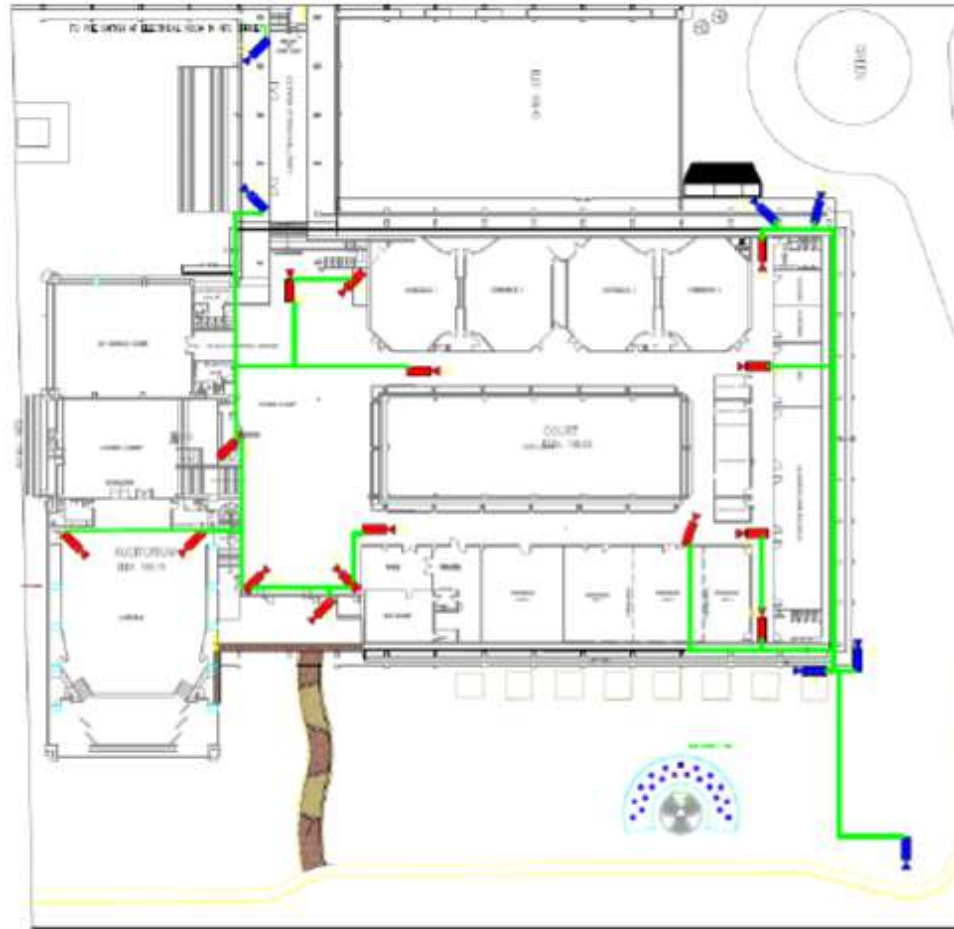
20 October
2023 (Friday)

p.19/28



LEGEND:

-  PULL BOX
-  VIDEO WALL
-  BULLET CAMERA
-  DOME CAMERA
-  NETWORK SWITCH
-  FIBER OPTIC CABLE
-  CAT 6 CABLE
-  CABLE TRAY



development academy of the
philippines

PROJECT TITLE	SECTOR	RECOMMENDING AGENCY	APPROVED BY	SHEET CONTENT	SHEET NO.
DAPCC CCTV SURVEILLANCE SYSTEM	CHRISTINA VER O. SORIENTA EXECUTIVE DIRECTOR	ALBERTO ANGELO M. JURENO GENERAL MANAGER	PRC-SIA L. TORRES SECRETARY	WENINA JR. DE AMAS CIVIL ENGINEER	4 13

DAPCC FLOOR PLAN OFFICE
SITE VISIT, PARKING
STRUCTURED CARLING & SITE
POSTBOX



**ANNEX "A" – REVISED
TECHNICAL SPECIFICATIONS
(AS PER BID BULLETIN No.1)**

DATE OF ISSUE

**20 October
2023 (Friday)**

PAGE NUMBER

p.20/28



PROJECT TITLE	DESIGN BY	ADMINISTRATIVE APPROVAL BY	APPROVED BY	SHEET CONTENT	SHEET NO.
SPACE OPT. SURVEILLANCE SYSTEM	CHRISTINE HERBIL S. SOLORIO SPECIALIST	ALBERTO RYDLO W. JANDAY ARCHITECT	RAC-ISA L. COBLES ENGINEER/ARCHITECT	SPACE PLAN PLAN LINES ELECTRICAL SYMBOLS STRUCTURAL SYMBOLS & OTHER NOTATIONS	5 13



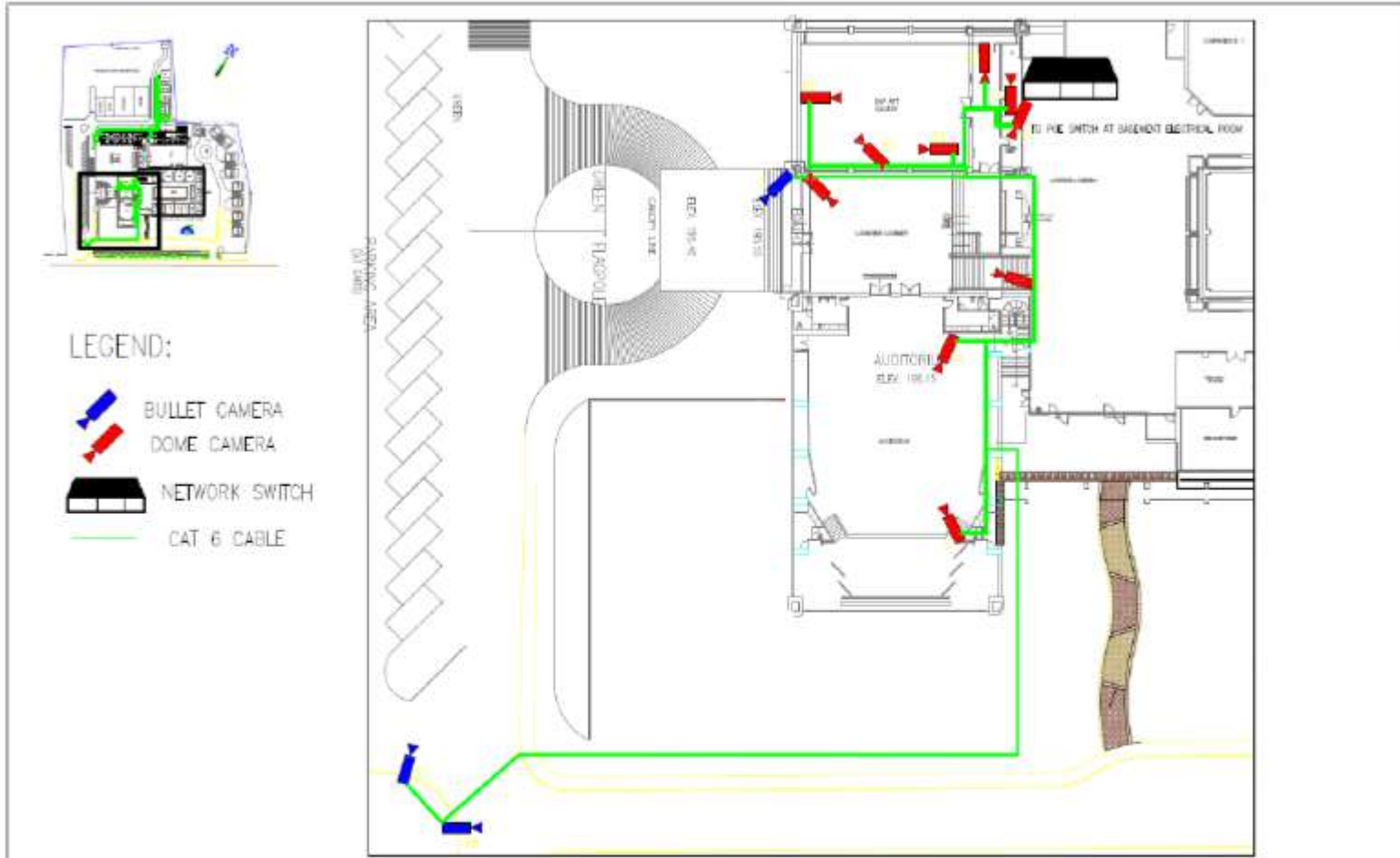
ANNEX "A" – REVISED TECHNICAL SPECIFICATIONS (AS PER BID BULLETIN No.1)

DATE OF ISSUE

PAGE NUMBER

20 October
2023 (Friday)

p.21/28



PROJECT TITLE	DESIGN BY	REQUIREMENT APPROVAL BY	APPROVED BY	SHEET CONTENT	SHEET NO.
DAPOD CCTV SURVEILLANCE SYSTEM BY CONTRACT ITEM 5.0000 10	CHRISTIAN YEE B. SUGIONGA ENGINEER	ALBERTO ANGELO M. JINENEZ ARCHITECT	FRANCIS L. DOBLES REGISTERED ELECTRICAL ENGINEER	MICHELLE BT OC ARMAS ARCHITECT	DAPOD FLOOR PLAN LAYOUT (CITY LAYOUT) (PROPOSED) STRUCTURED CHILING & COOL POSSIBLE
					6 13



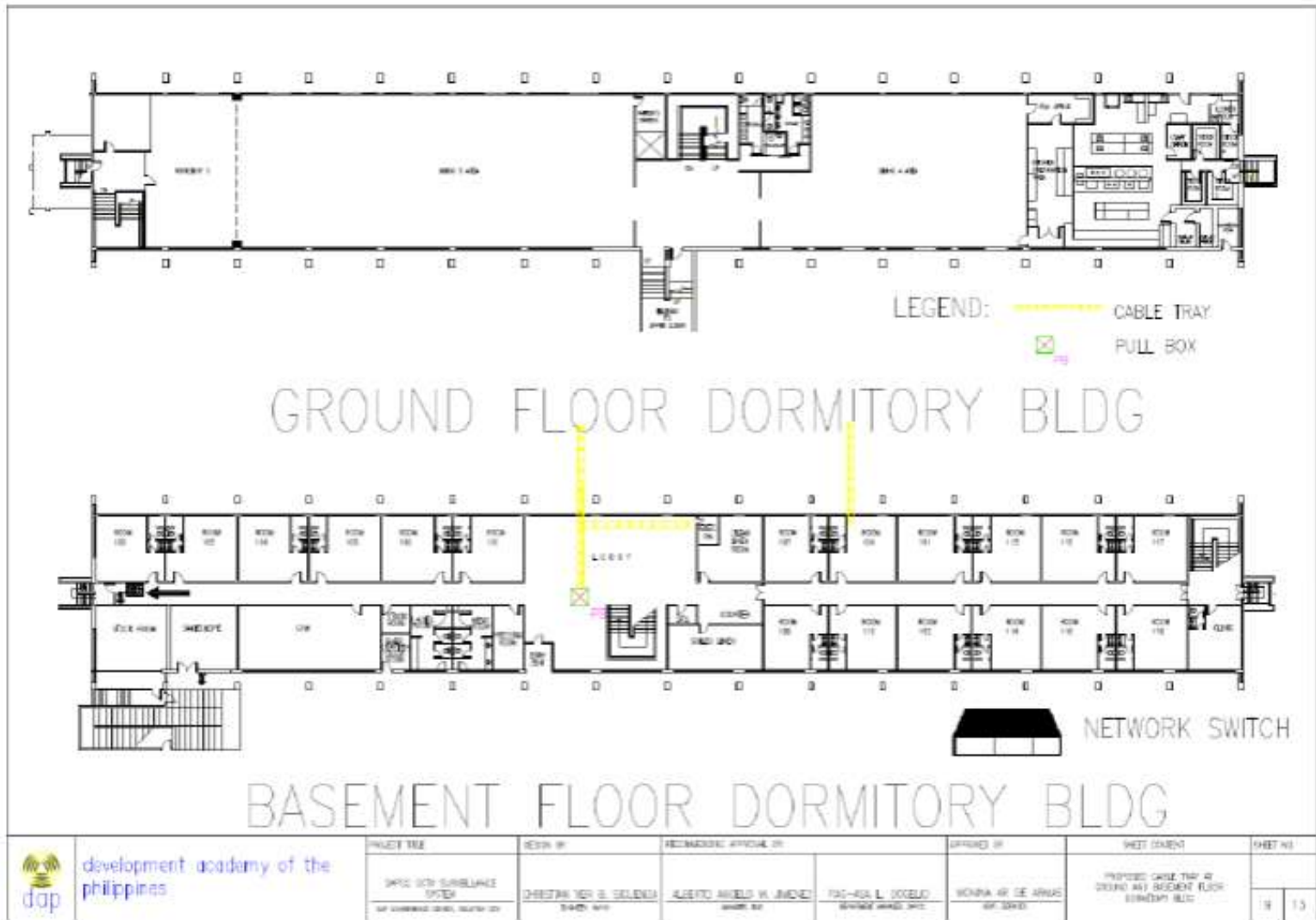
**ANNEX "A" – REVISED
TECHNICAL SPECIFICATIONS
(AS PER BID BULLETIN No.1)**

DATE OF ISSUE

**20 October
2023 (Friday)**

PAGE NUMBER

p.22/28





**ANNEX "A" – REVISED
TECHNICAL SPECIFICATIONS
(AS PER BID BULLETIN No.1)**

DATE OF ISSUE

**20 October
2023 (Friday)**

PAGE NUMBER

p.23/28



3RD FLOOR DORMITORY BLDG

LEGEND:  CABLE TRAY
 PULL BOX



2ND FLOOR DORMITORY BLDG



development academy of the
philippines

PROJECT TITLE	DESIGN BY	RECOMMENDING APPROVAL BY	APPROVED BY	SHEET CONTENT	SHEET NO.
ISAPC CCTV SURVEILLANCE SYSTEM (IN ORANGE ZONE NORTH 2F)	CHRISTOPHER B. SOLERENA DESIGNER	ALBERTO ANTONIO V. JIMENEZ CHECKER	MIC-ASA L. TOLEDO ENGINEER-IN-CHARGE	REVIEWED BY: (NAME) DATE: (DATE)	8 13

PREPARED UNDER THE AID OF
THE 2ND FLOOR SURVEILLANCE
SYSTEM



ANNEX "A" – REVISED
TECHNICAL SPECIFICATIONS
(AS PER BID BULLETIN No.1)

DATE OF ISSUE

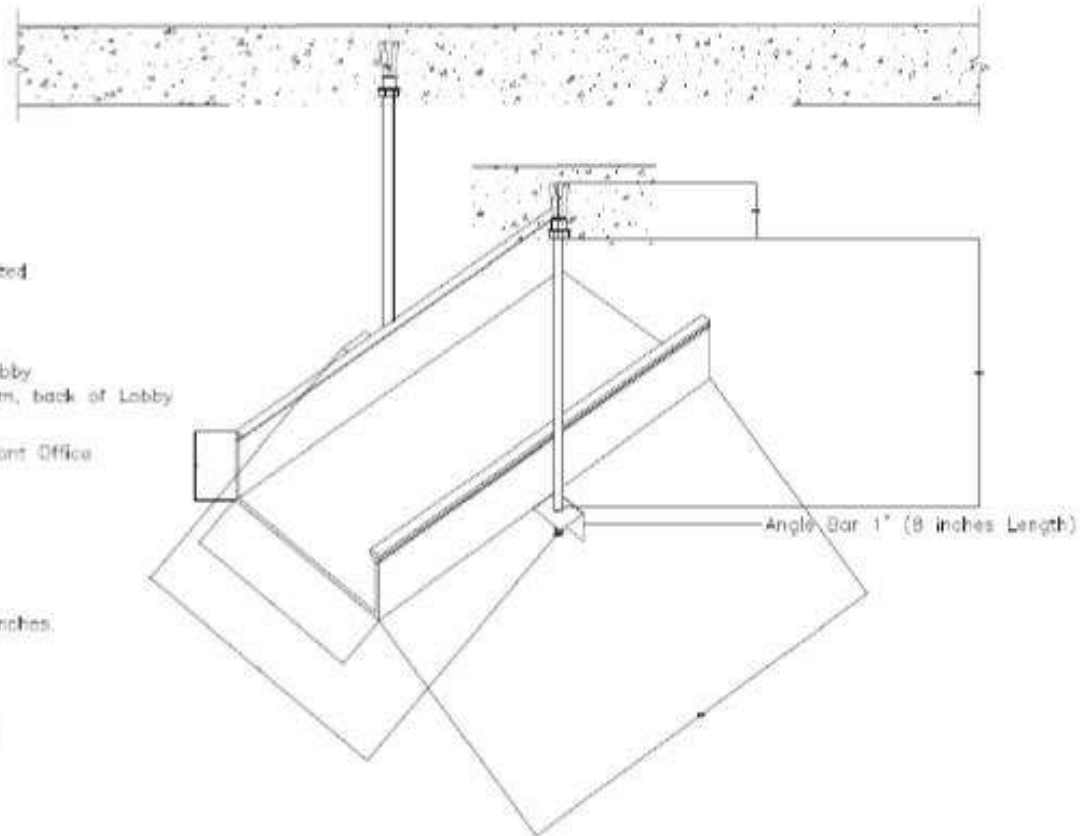
PAGE NUMBER

**20 October
2023 (Friday)**

p.24/28

NOTES:

1. The installed 2x6 Cable Tray were located at the following areas:
 - a.) Around Main Conference Building
 - b.) Beside the Connecting Hallway
 - c.) 3rd Floor Hallway & Lobby, back of Lobby
 - d.) 2nd Floor Hallway & Lobby, to EE Room, back of Lobby
 - e.) Basement Hallway & to EE Room
 - f.) PABX Room, Cashier Office going to Front Office
2. The Cable Trays are properly Sealed & Covered.
3. PVC Pipes are used to distribute UTP Cables from the Cable Tray to the respective CCTV Camera locations.
4. Length of Threaded Rod is 1 Meter.
5. Depth of Installed Expansion Bolt is 2 Inches.
6. Length of Cable Tray is 3 Meters.
7. Materials of Cable Tray
 - Metal cable trays are made of galvanized steel, stainless steel, and aluminum. Non-metallic cable trays are made of glass-fiber reinforced plastic.



development academy of the
philippines

PROJECT TITLE	DESIGN BY	RECOMMENDED APPROVAL BY	APPROVED BY	PROJECT OFFICE	SHEET NO.
SMC CCTV SURVEILLANCE SYSTEM	CHRISTINA VER B. BORDEN	ALBERTO ANGELO V. JIMENEZ	PAULISA L. SORIANO	SHERRY ANNE DE ALVARO	11
OF CANTONMENT, SOUTH CITY	DAVITA CITY	ARMADA DE	GENERAL MANAGER	OFF. MANAGER	12



**ANNEX "A" – REVISED
TECHNICAL SPECIFICATIONS
(AS PER BID BULLETIN No.1)**

DATE OF ISSUE

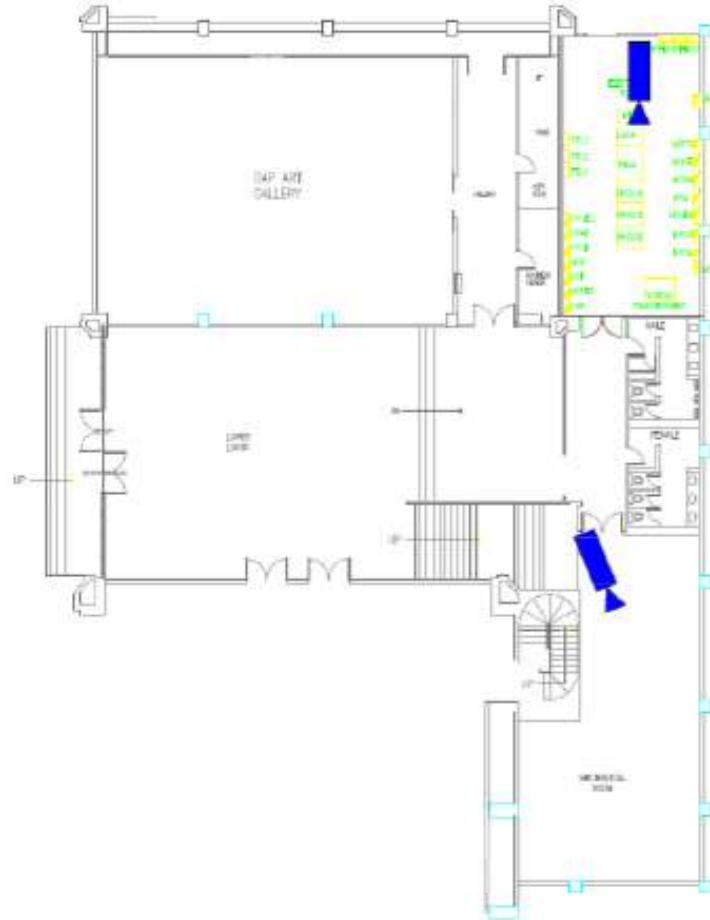
PAGE NUMBER

**20 October
2023 (Friday)**

p.25/28

LEGEND:

 BULLET CAMERA



development academy of the
philippines

PROJECT TITLE	DESIGN BY	RECOMMENDING APPROVAL BY	APPROVED BY	DESIGN CONSULTANT	DATE NO.
DAPCC OGD SURVEILLANCE SYSTEM DAP DIRECTORATE BUILDING UNIT	CHRISTIAN NERI B. VELAZQUEZ DESIGN ARCH	ALBERTO ANGELO M. JACINTO ARCHITECT	PAC-ISA L. OSORIO ENGINEERING ARCHITECT	MONTALBAN DE ANTON ARCHITECT	ELECTRICAL ROOM AND RECEPTION AREA 7 13



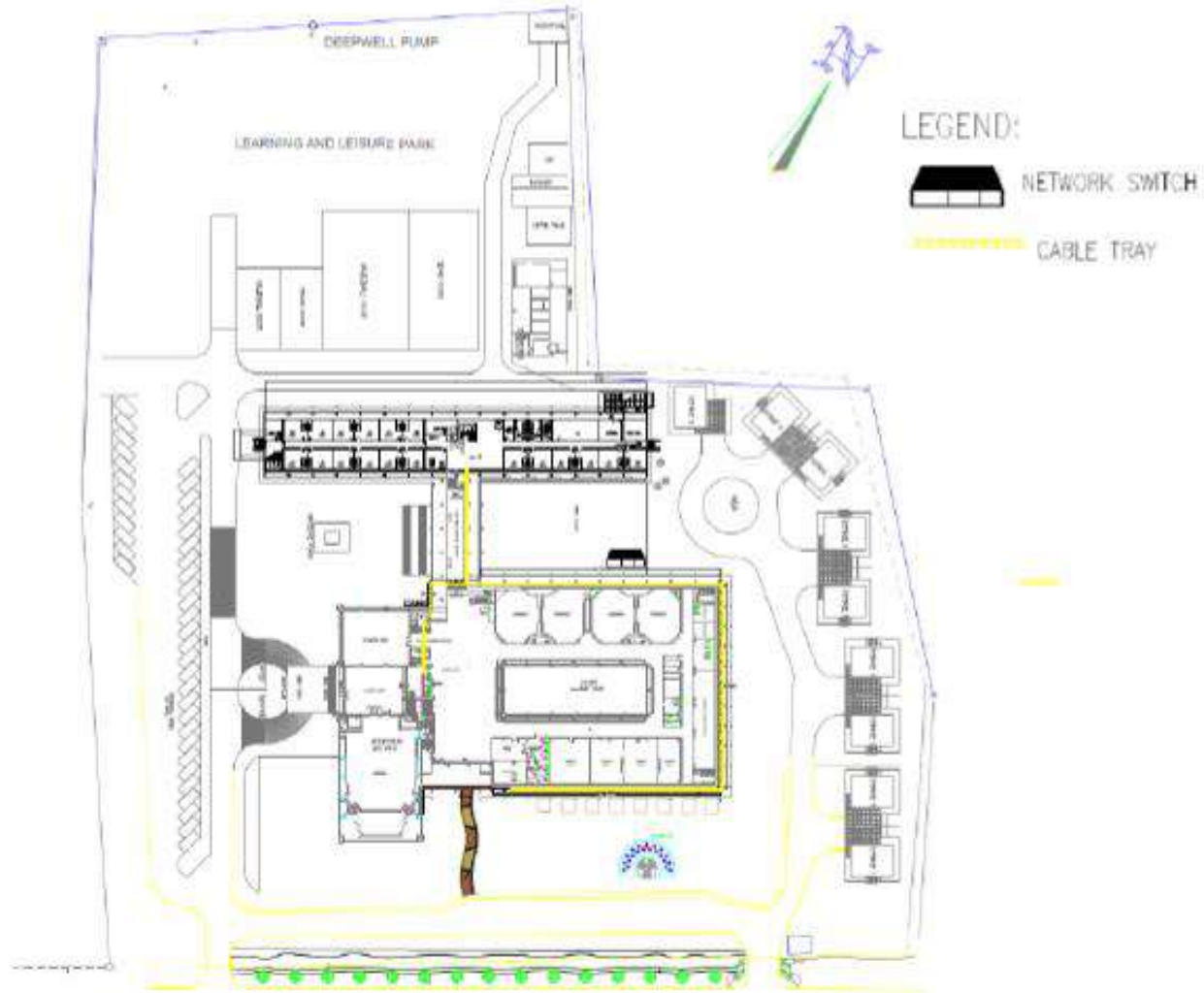
ANNEX "A" – REVISED
TECHNICAL SPECIFICATIONS
(AS PER BID BULLETIN No.1)

DATE OF ISSUE

**20 October
 2023 (Friday)**

PAGE NUMBER

p.26/28



development academy of the
 philippines

PROJECT TITLE	DESIGN BY	RECOMMENDING APPROVAL BY	APPROVED BY	SHEET CONTENT	SHEET NO.
DAPO CCTV SURVEILLANCE SYSTEM <small>FOR CONSTRUCTION BIDDING</small>	CHRISTIAN VER B. SQUENZA <small>DESIGNER (APC)</small>	ALBERTO ANGELO M. JIMENEZ <small>APPROVED (AS)</small>	PAO-SEA L. DOBELL <small>DESIGNER (APAC)</small>	MONINA AS DE ARNAGE <small>APPROVED (APAC)</small>	10
				INCREASED CABLE TRAY AT MAIN BUILDING AND CONNECTING HALLWAY	13



**ANNEX "A" – REVISED
TECHNICAL SPECIFICATIONS
(AS PER BID BULLETIN No.1)**

DATE OF ISSUE

PAGE NUMBER

**20 October
2023 (Friday)**

p.27/28



2nd Floor Lobby to EE Rooms



3rd Floor Lobby



Basement Lobby to EE Room, & Hallway



Back of 3rd Floor Lobby



PABX, Cashier, & Front Office



Connecting Hallway



development academy of the
philippines

PROJECT TITLE	DESIGN BY	ARCHITECTING FIRM/ALC.	APPROVED BY	SHEET NUMBER	SHEET NO.
SPACE CON. SURVEILLANCE CENTER OF COURSEWORK BUILDING (3/F)	CHRISTINE VER B. OLGUERA ARCHITECT	ALBERTO ANGELO M. LINDO ET ALC. INC.	FRANCIS L. COOPER REGISTERED ARCHITECT	MORNING STAR DE MENDOZA VP. ARCHT.	DESIGNED: CAROL TAY Z. ENLARGED: CAROL TAY Z.
					12 13



**ANNEX "A" – REVISED
TECHNICAL SPECIFICATIONS
(AS PER BID BULLETIN No.1)**

DATE OF ISSUE

PAGE NUMBER

**20 October
2023 (Friday)**

p.28/28



Main Electrical Room, & PABX Room



Main Electrical Room



Back of Conference Rm 5-8, FMSO, OP



Back of Conference Rm 5-8, FMSO, & OP



Back of FCIL, Workshop 4A, Clinic, & PMDP Office



Back of 2nd Floor Lobby, & Room 201



Back of 2nd, 3rd Floors Lobby, & Rms 201, 301



development academy of the philippines

PROJECT TITLE	DESIGN BY	RECOMMENDING APPROVAL BY	APPROVED BY	SHEET CONTENT	SHEET NO.
WAPIC CITY SURVEILLANCE SYSTEM	CHRISTINA VER B. SIO ENOZA DESIGN BY	ALBERTO ANGELO M. AVINEZ APPROVED BY	PAULISA L. DOSTEDO REVIEWED BY	PRINTED (PAGE 28) / STRUCTURED CABLE LAYOUT	13 / 13



ANNEX “B” – REVISED FORM
2: PRICE SCHEDULE
(AS PER BID BULLETIN No.1)

DATE OF ISSUE

PAGE NUMBER

**20 October
2023 (Friday)**

p.1/21

Bidder's LETTERHEAD

FORM 2: PRICE SCHEDULE

(AS PER GPPB RESOLUTION NO. 16-2020)

INSTRUCTIONS to BIDDERS:

01. THIS FORM SHOULD BE ACCOMPLISHED USING THE BIDDER'S LETTERHEAD, SIGNED COPY SHOULD BE SUBMITTED AS PART OF THE FINANCIAL DOCUMENTS MARKED AS "F02";
02. THE SIGNED COPY OF THIS DOCUMENT (IN PDF OR JPEG FORMAT) MUST BE PART OF THE ELECTRONIC FILES THAT SHOULD BE CONTAINED IN THE SUBMITTED ELECTRONIC BID; AND
03. DO NOT LEAVE BLANK CELLS. KINDLY PUT **N/A** IF "NOT APPLICABLE";
04. KINDLY USE ADDITIONAL SHEETS IF NECESSARY; AND
05. THE FILENAME STRUCTURE SHOULD BE "**F02_XXX=PRICE_SCHEDULE=<BIDDERNAME>**".

For Goods Offered From Within the Philippines

Name of Bidder _____

Page __ of __.

Invitation to Bid Number:

1	2	3	4	5	6	7	8	9	10
Item	Description	QTY	UNIT	Unit price EXW per item	Transportation and Insurance and all other costs incidental to delivery, per item	Sales and other taxes payable if Contract is awarded, per item	Cost of Incidental Services, if applicable, per item	Total Price, per unit (col 5+6+7+8)	Total Price delivered Final Destination (col 9) x (col 4)
HARDWARES									
1.01 Dome IP Camera	Supply and installation of Dome IP CCTV Camera: <ul style="list-style-type: none"> • 1/3 in. 4MP Progressive-scan CMOS Sensor • Triple-stream Encoding • Smart H.265+ and Smart H.264+ Dual Codec • 4MP (2688 × 1520) @30 fps, 2.8, Fixed Lens • Starlight Technology for Low-light Applications • Analytics+ Function –Perimeter Protection and Smart Motion Detection 	52.00	pcs						



ANNEX “B” – REVISED FORM

2: PRICE SCHEDULE

(AS PER BID BULLETIN No.1)

DATE OF ISSUE

PAGE NUMBER

20 October
2023 (Friday)

p.2/21

	<ul style="list-style-type: none"> • True Wide Dynamic Range (120 dB) and Day/Night IR Cut Filter • Enhanced Power and Data Transmission Distances (ePoE) • Arctic Pro Series Camera – Operational down to -40deg C(-40deg F) • IP67 Ingress Protection and IK10 Vandal Resistance • with Warranty 							
1.02 Bullet IP Camera	<p>Supply and installation of Bullet IP CCTV Camera:</p> <ul style="list-style-type: none"> • 5MP (2592 × 1944) @20 fps, 1/2.7" image sensor, 24/7 Full-color image • SMART H.264+/H.265+, AI H.264/H.265 encoding • 2.8/3.6 mm fixed lens • Built-in warm light and IR LED; the max. IR illumination distance is 30m • Smart Dual Illumination Active Deterrence: Sound and light alarm • Support vehicle and human classification • Intelligent detection: Intrusion, tripwire 	21.00	pcs					



ANNEX “B” – REVISED FORM

2: PRICE SCHEDULE

(AS PER BID BULLETIN No.1)

DATE OF ISSUE

PAGE NUMBER

20 October
2023 (Friday)

p.3/21

	<ul style="list-style-type: none"> • 12V DC/PoE power supply • IP67 protection • with Warranty 								
1.03 Smart POE Unmana ged Data Switch	<p>Supply and installation of 24 port Smart POE Unmanaged Data Switch:</p> <ul style="list-style-type: none"> • Smart POE Unmanaged Data Switch (The next generation Smart switch, provides 24ports – 24 10/100/1000Base-T POE ports, 4SFP optical ports, support IEEE 802.3af/ at power supply standard, single port maximum output PoE power 30W, 370W max output PoE power, support unified/ centralized management, lifetime license); • Combo PoE Switch • Interface: Combo 1000BASE-T/SFP port x 110/100 Base-T x16 (Hi PoE/PoE+/PoE) PoE budget : 135W Dimension: 340mm x200mm x43mm CCTV monitor mode, VLAN isolation mode • with Warranty 	6.00	pcs						
1.04 64 Channel Network	Supply and installation of Two (2) 64 Channel	2.00	pcs						



ANNEX “B” – REVISED FORM
2: PRICE SCHEDULE
(AS PER BID BULLETIN No.1)

DATE OF ISSUE

PAGE NUMBER

**20 October
2023 (Friday)**

p.4/21

Video Recorder	<p>Network Video Recorder:</p> <ul style="list-style-type: none"> • Smart H.265+/Smart H.264+/H.265/H.264 • support 64-ch IPC inputs, max resolution 12MP • 320Mbps input Bandwidth • Support 16-ch 1080p@30 fps self-adaptive decoding ability • 8 SATA III ports, up to 10 TB for a single HDD • 2 VGA, 2 HDMI, 2 RJ45(1000M) • Supports ONVIF protocol, DHCP, P2P function • 1-channel fisheye dewarping (AI by NVR) • AI by Camera: Perimeter protection; face detection and recognition; SMD Plus; video metadata; ANPR; people counting; heat map • with Warranty 								
1.05 Data Cabinet	<p>Supply and installation of Data Cabinet:</p> <ul style="list-style-type: none"> • Data Cabinet will be install at the following areas: <input checked="" type="checkbox"/> PABX Room (28U / 4 feet Data Cabinet); 	4.00	pcs						



ANNEX “B” – REVISED FORM

2: PRICE SCHEDULE

(AS PER BID BULLETIN No.1)

DATE OF ISSUE

PAGE NUMBER

20 October
2023 (Friday)

p.5/21

	<ul style="list-style-type: none"> ✓ Workshop Electrical Room (9U / 1.5 feet Data Cabinet); ✓ Electrical Room at RFS Office (9U / 1.5 feet Data Cabinet); and ✓ Basement Electrical Room (12U / 2 feet Data Cabinet) • (9U, 12U, & 28U) 19" standard opening; Framing and Paneling Gauge#16, Black (powder-coated); Adjustable with mounting railings; Plexiglas Front Door with Lock; • Detachable Side Panels with Lock & Ventilation; Detachable Back Panels with Lock; With 1 unit Vertical powerstrip 4 CO's, 3 prong, 220V, 20 Amp fuse; With 1 unit Vertical Cable Manager at the back ring type; and with 4 pcs. Exhaust Fan at the top panel • with Warranty 								
1.06 10TB Hard Disk Drive	<ul style="list-style-type: none"> • 10TB Surveillance Hard Disk Drive SATA III; • with Warranty 	16.00	pcs						
1.07 Fiber	<ul style="list-style-type: none"> • LC with Standard Boots; 	1.00	roll						



ANNEX “B” – REVISED FORM

2: PRICE SCHEDULE

(AS PER BID BULLETIN No.1)

DATE OF ISSUE

PAGE NUMBER

20 October
2023 (Friday)

p.6/21

Patch Cable End to End (300M)	<ul style="list-style-type: none"> • LC 12mm/18mm with Short Boots; • SC 25mm with Short Boots • Polish Type SMF: UPC-UPC; UPC-APC; APC-APC; MMF: UPC-UPC Connector Ferrule Zirconia Ceramic Cable Outside Diameter Duplex: 1.6/2.0/3.0mm, Simplex: 0.9/2.0/3.0mm, Interchangeability ≤0.2dB, Vibration ≤0.2dB • with Warranty 								
1.08 Fiber Optical Module	<ul style="list-style-type: none"> • Single mode single fiber; LC port; 1310nm sending, and 1550nm receiving; Transmission distance up to 20km; • with Warranty 	6.00	pcs						
1.09 55" LED 4K Monitor	<ul style="list-style-type: none"> • 55" 4K UHD LED Monitor; • Industrial level LCD panel, suitable for continuous 24/7 operation • 4K Ultra-HD resolution • Using tamper-proof metal housing • Built-in 3D COMB filter and 3D noise reduction • 6ms response time for no motion blur or ghosting 	2.00	pcs						



ANNEX “B” – REVISED FORM
2: PRICE SCHEDULE
(AS PER BID BULLETIN No.1)

DATE OF ISSUE

PAGE NUMBER

**20 October
2023 (Friday)**

p.7/21

	<ul style="list-style-type: none"> • 1.07G colors, for a realistic and immersive visual experience • High-fidelity digital processing • 178°/178° wide uninterrupted viewing angle • With Bracket • with Warranty 								
1.10 Fiber Patch Panel	<ul style="list-style-type: none"> • Category 6 180° 1U 24-Port Unshielded Patch Panel, Dual Type IDC, W/ Two Cable Management Bars, Black; • with Warranty 	6.00	pcs						
1.11 Fiber Patch Cord	<ul style="list-style-type: none"> • LC/UPC – SC/UPC Duplex Single mode, • 9/125 Patch Cord 2M,2.0mm, LSOH; • with Warranty 	80.00	pcs						
1.12 UTP CAT6 Cable	<ul style="list-style-type: none"> • Supply & Installation of Universal Twisted Pair (UTP) Category 6 (CAT 6) Cable, 305 meter or 1000 ft. per box; • with Warranty 	1	lot						
1.13 LC Pigtail	<ul style="list-style-type: none"> • Multimode OM3 Simplex 1M, 4.0 mm, LSOH; with Warranty 	25.00	pcs						
1.14 Smart- UPS Power Supply	<ul style="list-style-type: none"> • Supply & Installation of High frequency, On-line Smart UPS, Rack-Tower Convertible, Hot-Swappable Battery Module Design, 	1.00	pc						



ANNEX “B” – REVISED FORM

2: PRICE SCHEDULE

(AS PER BID BULLETIN No.1)

DATE OF ISSUE

PAGE NUMBER

20 October
2023 (Friday)

p.8/21

	<ul style="list-style-type: none"> • 3KVA/2.7 KW, PF: 0.9, 72Vdc, with 6pcs X 9Ah built-in battery, with USB, RS232, EPO, SNMP function Port • with Warranty 								
1.15	Supply & Installation of RJ45	1.00	lot						
1.16	24 P, 1 U Cable Manager	15.00	sets						
ROUGHING-IN INSTALLATION MATERIALS									
1.17	Supply, installation and termination of Fiber Optic 4 core multimode outdoor type	1.00	Lot						
1.18	Supply, installation and termination of conduits, structured cabling installation of UTP CAT 6 Cable and Fiber Optic Cable, cable trays around the Main Conference Building, and in the side of Connecting Hallway, cable pulling, CCTV Weatherproof Conduit Boxes (100X100X70) (73 pcs), fittings, boxes, support/hangers, connectors, accessories, testing, commissioning, and decommissioning.	1.00	Lot						
Area 1 (Data Cabinet Installation at PABX Room)									
1.19	Installation of Data Cabinet with height 28U / 4 ft., Powder Coated, Black, perforated two side panels, Perforated back, and front Door;	1.00	Lot						



ANNEX “B” – REVISED FORM
2: PRICE SCHEDULE
(AS PER BID BULLETIN No.1)

DATE OF ISSUE

PAGE NUMBER

**20 October
2023 (Friday)**

p.9/21

	German cooling fan, with three pins German type plug, 1wire,4 fans (cable length, 1M); 1U 19" power distribution unit, w/ aluminum body, US (NEMA5-15P) Plug, 6 universal outlets, w/LED master switch at PABX Room;								
1.20	Installation, testing, and commissioning of Two (2) Smart PoE Managed Switch, Two (2) Network Video Recorders, and Rackmount Smart-UPS power supply to the Data Cabinet;	1.00	Lot						
1.21	Wall installation, testing, and commissioning of Two (2) 55" LED 4K Monitors connected to NVR located at PABX Room;	1.00	Lot						
1.22	Installation of Roughing-Ins (cable trays, conduits and other necessary accessories).	1.00	Lot						
1.23	Supply, Installation, Cable Wiring Termination, Testing and Commissioning of New Electrical Panel Board with 1 pc. Main Circuit Breaker (100 Amperes) Bolt-On Type and 8 pcs. Branch Circuit Breakers Bolt-On Type (1 pc. 20 Amperes for the Lighting Circuits, 1 pc. 30 Amperes for the Air Conditioning	1.00	Lot						



ANNEX "B" – REVISED FORM

2: PRICE SCHEDULE

(AS PER BID BULLETIN No.1)

DATE OF ISSUE

PAGE NUMBER

20 October
2023 (Friday)

p.10/21

	Unit, 1pc. 30 Amperes for the Convenience Outlets, 1 pc. 40 Amperes for the UPS of the existing IT Network Infrastructure, 1pc. 40 Amperes or higher for the UPS of CCTV Surveillance System, other 3 pcs. 20 Amperes Circuit Breaker for Spare Provisions)								
Area 2 (Lower Lobby Electrical and Mechanical Room IP CCTV Positions)									
1.24	Installation of Roughing-Ins (cable trays, conduits and other necessary accessories)	1.00	Lot						
1.25	Installation of Two (2) units of Indoor Dome IP CCTV Cameras at the Mechanical Room and Electrical Room Entrance;	1.00	Lot						
1.26	Wire Pulling, Laying, and Structured cabling from Smart PoE Network Switch at PABX room (for IP CCTV Cameras) to Mechanical and Electrical Room located at the Lower lobby (Camera No. 74 & 75) based on Floor Plan/ Layout. (See attached plan/ layout)	1.00	Lot						
Area 3 (Data Cabinet Installation at Electrical room located at the RFS Office)									
1.27	Installation of One (1) unit Data Cabinet with specifications of 600 x 450, 9u/1.5Ft. 90.7kg max. loading capacity),	1.00	Lot						



ANNEX “B” – REVISED FORM

2: PRICE SCHEDULE

(AS PER BID BULLETIN No.1)

DATE OF ISSUE

PAGE NUMBER

20 October
2023 (Friday)

p.11/21

	toughed glass door w/ spring lock, detachable side panel (not vented), 2 pcs. Exhaust fan w/ cable entry at the top panel, 6 outlet PDU w/ 3.0mm cable length (220V,3prong,10A), powder coated finish, with exhaust fans at the Electrical room located at the RFS Office area; with provision of 1KVA UPS Floor/Wall Mount (4x Universal Outlets, Cable Length: 1.20 mtrs, Rated Power: 600 Watts, HxWxD: 9.25 x 16.05 x 30.5 cm								
1.28	Installation, testing, and commissioning of One (1) Smart PoE Managed Switch to the Data Cabinet;	1.00	Lot						
1.29	Installation of Roughing-Ins (cable trays, conduits and other necessary accessories).	1.00	Lot						
Area 4 (Data Cabinet Installation at Electrical room located at the Workshop Area)									
1.30	Installation of One (1) unit Data Cabinet with specifications of 600 x 450, 9u/1.5Ft. 90.7kg max. loading capacity), toughed glass door w/ spring lock, detachable side panel (not vented), 2 pcs. Exhaust fan w/ cable entry at the top panel, 6 outlet PDU w/ 3.0mm cable length (220V,3prong,10A), powder coated finish,	1.00	Lot						



ANNEX “B” – REVISED FORM

2: PRICE SCHEDULE

(AS PER BID BULLETIN No.1)

DATE OF ISSUE

PAGE NUMBER

20 October
2023 (Friday)

p.12/21

	with exhaust fans at the Electrical room located at the Workshop Area; with provision of 1KVA UPS Floor/Wall Mount (4x Universal Outlets, Cable Length: 1.20 mtrs, Rated Power: 600 Watts, HxWxD: 9.25 x 16.05 x 30.5 cm								
1.31	Installation, testing, and commissioning of One (1) Smart PoE Managed Switch to the Data Cabinet.	1.00	Lot						
Area 5 (Dining and Basement Left-wing and Right-wing area, Engineering and Parking area IP CCTV Positions)									
1.32	Installation of Roughing-Ins (cable trays, conduits and other necessary accessories);	1.00	Lot						
1.33	Installation of Seventeen (17) units of Indoor Dome IP CCTV Cameras and Eight (8) Outdoor Bullet IP CCTV Cameras;	1.00	Lot						
1.34	Wire Pulling, Laying, and Structured cabling from Smart PoE Network Switch at Electrical room located at Dining lobby of two (2) runs each UTP Cable (for IP CCTV Cameras) to Dining Area (No. 70, 47, 48, 49, 71, 46, 53, 68, 54), and to Basement Area (No. 45, 44, 43, 42, 40, 61,41) based on Floor Plan/ Layout. (See attached plan/ layout);	1.00	Lot						



ANNEX “B” – REVISED FORM

2: PRICE SCHEDULE

(AS PER BID BULLETIN No.1)

DATE OF ISSUE

PAGE NUMBER

20 October
2023 (Friday)

p.13/21

1.35	Another Wire Pulling, Laying, and Structured cabling from Smart POE Network Switch at Electrical room located at Dining lobby of two (2) runs each UTP Cable (for IP CCTV Cameras) to Engineering, Staff lounge and Side Parking area (No. 55, 56, 59, 69, 72, 73, 76, 77, 78) based on Floor Plan/ Layout. (See attached plan/ layout);	1.00	Lot						
1.36	Conduction of Wire Termination/s along with appropriate Testing & Commissioning and De-commissioning of old wires and hardware.	1.00	Lot						
Area 6 (2nd-floor and 3rd floor Left-wing and Right-wing IP CCTV Positions)									
1.37	Installation of Roughing-Ins (cable trays, conduits and other necessary accessories);	1.00	Lot						
1.38	Installation of Fifteen (15) units of Indoor Dome IP CCTV Cameras;	1.00	Lot						
1.39	Wire Pulling, Laying, and Structured cabling from Smart PoE Network Switch at Electrical room located at Dining lobby of two (2) runs each UTP Cable (for IP CCTV Cameras) to 2nd floor Area (No. 24, 33, 34, 35, 36, 37, 38, 39), and to 3rd floor Area (No. 26, 27, 28, 29, 30, 31, 32) based on	1.00	Lot						



ANNEX “B” – REVISED FORM

2: PRICE SCHEDULE

(AS PER BID BULLETIN No.1)

DATE OF ISSUE

PAGE NUMBER

20 October
2023 (Friday)

p.14/21

	Floor Plan/ Layout. (See attached plan/ layout);								
1.40	Conduction of Wire Termination/s along with appropriate Testing & Commissioning and De-commissioning of old wires and hardware.	1.00	Lot						
Area 7a (Upper Lobby and Function Room Area IP CCTV Positions)									
1.41	Installation of Roughing-Ins (cable trays, conduits and other necessary accessories);	1.00	Lot						
1.42	Installation of Thirteen (13) units of Indoor Dome IP CCTV Cameras and Five (5) Outdoor Bullet IP CCTV Cameras;	1.00	Lot						
1.43	Wire Pulling, Laying, and Structured cabling from Smart PoE Network Switch at Electrical room located in front of Workshop Male CR of two (2) runs each UTP Cable (for IP CCTV Cameras) to Upper lobby and Function room Area (No.1, 9, 10, 11, 12, 13, 14, 15, 16, 17, 18, 19, 20, 21, 22, 23, 25, 52) based on Floor Plan/ Layout. (See attached plan/ layout);	1.00	Lot						
1.44	Conduction of Wire Termination/s along with appropriate Testing & Commissioning and De-commissioning of old wires and hardware.	1.00	Lot						



ANNEX “B” – REVISED FORM
2: PRICE SCHEDULE
(AS PER BID BULLETIN No.1)

DATE OF ISSUE

PAGE NUMBER

**20 October
2023 (Friday)**

p.15/21

Area 7b (Upper Lobby and Function Room Area IP CCTV Positions)									
1.45	Installation of Roughing-Ins (cable trays, conduits and other necessary accessories);	1.00	Lot						
1.46	Installation of Two (2) units of Indoor Dome IP CCTV Cameras and Two (2) Outdoor Bullet IP CCTV Cameras;	1.00	Lot						
1.47	Wire Pulling, Laying, and Structured cabling from Smart PoE Network Switch located at PABX of two (2) runs each UTP Cable (for IP CCTV Cameras) to Upper lobby and Function room Area (No.7, 8, 50, 51) based on Floor Plan/ Layout. (See attached plan/ layout);	1.00	Lot						
1.48	Conduction of Wire Termination/s along with appropriate Testing & Commissioning.	1.00	Lot						
Area 8 (Lower Lobby and Side Parking Area IP CCTV Positions)									
1.49	Installation of Roughing-Ins (cable trays, conduits and other necessary accessories);	1.00	Lot						
1.50	Installation of Five (5) units of Indoor Dome IP CCTV Cameras and Four (4) Outdoor Bullet IP CCTV Cameras;	1.00	Lot						
1.51	Wire Pulling, Laying, and Structured cabling from Smart PoE Network Switch located	1.00	Lot						



ANNEX “B” – REVISED FORM
2: PRICE SCHEDULE
(AS PER BID BULLETIN No.1)

DATE OF ISSUE

PAGE NUMBER

**20 October
2023 (Friday)**

p.16/21

	at PABX of two (2) runs each UTP Cable (for IP CCTV Cameras) to Upper lobby and Function room Area (No.2, 3, 4, 5, 6, 57, 58, 60, 62) based on Floor Plan/ Layout. (See attached plan/layout);								
1.52	Conduction of Wire Termination/s along with appropriate Testing & Commissioning.	1.00	Lot						
General Requirements									
1.53	Mobilization of Manpower, equipment, tools, and temporary facilities. Provide temporary field office with health/safety/first aid facility and utilities with corresponding sub-meters to be connected to sub-meters to be connected to supply of water and electricity. Provide Personal Protective Equipment (PPE) and other Safety & Health Paraphernalia.	1.00	Lot						
1.54	Obtain building permits, and other necessary permits such as Electronic and/or Electrical Permits as required for the project;	1.00	Lot						
1.55	Supply and deliver all devices needed to install the upgraded CCTV System such as but not limited to: IP	1.00	Lot						



ANNEX “B” – REVISED FORM
2: PRICE SCHEDULE
(AS PER BID BULLETIN No.1)

DATE OF ISSUE

PAGE NUMBER

**20 October
2023 (Friday)**

p.17/21

	CCTV Cameras, Network Video Recorder, Wires and Cables, Data Switches, Monitors, Hard Disk Drives, etc.;								
1.56	Install piping, structured cabling, cable trays, hangers, base mountings, cabinets, accessories, CCTV devices such as cameras and video recorder, etc. in accordance to correct engineering standards and material specifications as cited in its operating manual;	1.00	Lot						
Turn-Over and Acceptance									
1.57	End to End Termination, Testing including Fluke testing and Optimal Time-Domain Reflectometer (OTDR) & Commissioning, Fiber Optics, Networking, Fiber Optic Cable Design, and Installation, Fiber Termination and Fusion Splicing (FOC Fusion Machine), FOC Patch Panel Splicing, and Termination, Continuity Testing Power source and Light Meters Configuration, Installation / termination and adjustment, and Programming, Decommissioning and Turn-over of all	1.00	Lot						



ANNEX “B” – REVISED FORM
2: PRICE SCHEDULE
(AS PER BID BULLETIN No.1)

DATE OF ISSUE

PAGE NUMBER

**20 October
2023 (Friday)**

p.18/21

	identified obsolete CCTV Cameras, Cablings, and other accessories, and system integration and configuration of existing CCTV System at Cottages (via internet/data connection) for the entire IP CCTV system. Repair of three (3) identified CCTV units at Cottages. Supply and installation of 4+2 100 Mbps Long-Range PoE Switch (Model: WI-PS205H).							
1.58	Clean and restore the areas affected during and after the installation and testing including rectification/correction of punch-listed items;	1.00	Lot					
1.59	Demobilization. Dismantling of temporary facilities, pullout of debris resulting from the conduct of the works	1.00	Lot					
1.60	The Contractor/Supplier shall provide a quarterly preventive maintenance checkup, free of charge for at least one year after the system has been commissioned and accepted by DAP;	1.00	Lot					
1.61	Submission of Post Documentary requirements:	1.00	Lot					



ANNEX "B" – REVISED FORM
2: PRICE SCHEDULE
(AS PER BID BULLETIN No.1)

DATE OF ISSUE

PAGE NUMBER

**20 October
2023 (Friday)**

p.20/21

	<p>in USB Thumb Drive of "AS-BUILT PLANS" in PDF and CAD format.</p> <ul style="list-style-type: none">• Manuals of all supplied and installed equipment comprising the Technical Specifications and Product Installation Instructions;• Operational Brochure/s;• Maintenance Manuals, including draft of Process and Work Instruction Manual (PAWIM) for the use of DAPCC Maintenance Personnel;• Conduct training of the DAP maintenance personnel who will operate and maintain all equipment, facilities and utilities installed;• Warranty Certificate that complies to the GCC Clause 5 Warranty under Section V Special Conditions of Contract							
--	---	--	--	--	--	--	--	--

Name: _____

Legal Capacity: _____



ANNEX "B" – REVISED FORM

2: PRICE SCHEDULE

(AS PER BID BULLETIN No.1)

DATE OF ISSUE

PAGE NUMBER

20 October
2023 (Friday)

p.21/21

Signature: _____
Duly authorized to sign Bid for and on behalf of _____

For Goods Offered From Abroad

Name of Bidder _____ Page ___ of ____.

Invitation to Bid Number:

1	2	3	4	5	6	7	8	9
Item	Description	Country of origin	Quantity	Unit price CIF port of entry (specify port) or CIP named place (Specify border point or place of destination)	Total CIF or CIP price per item (col.4 x 5)	Unit Price Delivered Duty Unpaid (DDU)	Unit price Delivered Duty Paid (DDP)	Total Price delivered DDP (col.4 x 8)
A								
B								

Name: _____
Legal Capacity: _____
Signature: _____
Duly authorized to sign Bid for and on behalf of _____



**ANNEX “C” – SCHEDULE OF
REQUIREMENTS
(AS PER BID BULLETIN No.1)**

DATE OF ISSUE

PAGE NUMBER

**20 October
2023 (Friday)**

p.1/1

Section VI. Schedule of Requirements

The delivery schedule expressed as weeks/months stipulates hereafter a delivery date which is the date of delivery to the project site.

Item Number	Description	Quantity	Delivered, Weeks/Months
1	IP CCTV Cameras	73 pcs	Within 60 days from receipt of NTP
2	64 Channel Network Video Recorder	2 pcs	Within 60 days from receipt of NTP
3	24-port Network Switch-Hardware	6 pcs	Within 60 days from receipt of NTP
4	Data Cabinet 9U, 12U, 28U w/built-in Fan	4 pcs	Within 60 days from receipt of NTP
5	55” LED 4K Monitor	2 pcs	Within 60 days from receipt of NTP
6	Smart-UPS Power Supply	1 pc	Within 60 days from receipt of NTP
7	Surveillance Hard Drive (10TB)	16 pcs	Within 60 days from receipt of NTP
8	Fiber Patch Cable End to end (300M)	1 roll	Within 60 days from receipt of NTP
9	Fiber Optic Module	6 pcs	Within 60 days from receipt of NTP
10	UTP CAT6 Cable	1 lot	Within 60 days from receipt of NTP
11	Fiber Patch Panel	6 pcs	Within 60 days from receipt of NTP
12	Fiber Patch Cord	80 pcs	Within 60 days from receipt of NTP
13	RJ45	1 lot	Within 60 days from receipt of NTP