



BID BULLETIN No.2		31 October 2023 (Tuesday)
<p>BIDDING NO.: IB23-408235-04</p> <p>APPROVED BUDGET CEILING (ABC): ₱3,500,000.00</p> <p>DATE OF PRE BID CONFERENCE 10 October 2023 (Tuesday); 10:00 AM Via Google Meet Platform meet.google.com/uun-xyfm-ssr</p>	<p>TITLE/DESCRIPTION: “ONE (1) LOT SUPPLY, DELIVERY, INSTALLATION, CONFIGURATION, TESTING & COMMISSIONING, AND UPGRADING OF THE CLOSED-CIRCUIT TELEVISION SURVEILLANCE SYSTEM AT DAP CONFERENCE CENTER IN TAGAYTAY”</p>	

Relative to the clarification letter dated October 27, 2023 forwarded to DAP Bids and Awards Committee Secretariat by one of the prospective bidders for the above-stated Project, the following clarifications from prospective bidders are being posted for the information of all concerned, as approved by the BAC & TWG:

Reference based on the OBD / Pre-Bid Conference / Site Inspection / Bid Bulletin	Description based on the OBD / Queries	New description / Clarification
<p>Annex A Revised Technical Specifications of the Bid Bulletin No. 1 Supply and installation of Dome IP CCTV Camera</p>	<p>Specification:</p> <ul style="list-style-type: none"> •1/3 in. 4MP Progressive-scan CMOS Sensor •Triple-stream Encoding •Smart H.265+ and Smart H.264+ Dual Codec •4MP (2688 × 1520) @30 fps, 2.8, Fixed Lens •Starlight Technology for Low-light Applications •Analytics+ Function –Perimeter Protection and Smart Motion Detection •True Wide Dynamic Range (120 dB) and Day/Night IR Cut Filter •Enhanced Power and Data Transmission Distances (ePoE) •Arctic Pro Series Camera – Operational down to -40deg C(-40deg F) •IP67 Ingress Protection and IK10 Vandal Resistance •with Warranty 	<p>Specification:</p> <ul style="list-style-type: none"> •4-MP 1/1.8" CMOS image sensor, low luminance, and high-definition image. •Outputs max. 4MP (2688×1520) @25/30 fps. •Built-in IR LED, and the max. illumination distance is 40 m. •ROI, SVC, SMART H.264+/H.265+, AI H.264/H.265, encoding after filter, flexible coding, applicable to various bandwidth and storage environments. •Rotation mode, WDR, 3D NR, HLC, BLC, digital watermarking, applicable to various monitoring scenes. •With deep learning algorithm, it supports: video metadata, smart sound detection, IVS, face detection, smart object detection, and people counting, etc. •Alarm: 2 in, 1 out; audio: 1 in, 1 out; supports max. 512 GB Micro SD card, built-in MIC.



Reference based on the OBD / Pre-Bid Conference / Site Inspection / Bid Bulletin	Description based on the OBD / Queries	New description / Clarification
		<ul style="list-style-type: none"> •12 VDC/24 VAC/PoE power supply; ePoE. •IP67 and IK10 protection, heater. •SMD 3.0. •with Warranty
<p>Annex A Revised Technical Specifications of the Bid Bulletin No. 1 Smart POE Unmanaged Data Switch</p>	<p>Specification:</p> <ul style="list-style-type: none"> •Smart POE Unmanaged Data Switch (The next generation Smart switch, provides 24 ports – 24 10/100/1000 Base-T POE ports, support IEEE 802.3af/ at power supply standard, single port maximum output PoE power 30W, 370W max output PoE power, support unified / centralized management, lifetime license); •Combo PoE Switch •Interface: Combo 1000 Base-T /SFP port x 110/100 Base-T x16 (Hi PoE/PoE+/PoE) PoE budget: 135 W Dimension: 340 mm x 200 mm x 43 mm CCTV monitor mode, VLAN isolation mode •with Warranty 	<p>Specification:</p> <ul style="list-style-type: none"> •Smart POE Unmanaged Data Switch (The next generation Smart switch, provides 24 Port POE Switch with 2 SFP Port: Port 1–24: 24 x RJ45 10/100/1000 M (PoE); Port 25–26: 2 x RJ45 10/100/1000 (uplink); Port 27–28: 2 x SFP 1000 M (uplink) •support unified/ centralized management, lifetime license •Intelligent PoE •Red Port Supports BT 90W •All-giga Ports •Smooth Transmission •Wide Working Temperature: –10 to 55°C (14°F to 131°F) •Plug and Play •with Warranty
<p>Annex A Revised Technical Specifications of the Bid Bulletin No. 1 or OBD page 29 Item 1.08 (Section VII. Technical Specifications) Fiber Optic Module</p>	<p>Specification:</p> <ul style="list-style-type: none"> •Single mode single fiber; LC port; 1310nm sending, and 1550nm receiving; Transmission distance up to 20km; •with Warranty 	<p>Specification:</p> <ul style="list-style-type: none"> •Multimode single fiber; LC port; 1310nm sending, and 1550nm receiving; Transmission distance up to 20km; •with Warranty <p>Kindly refer to the Annex “A”- Revised Section VII: Technical Specifications ver.2 and Annex “B”-Revised Form 2: Price Schedule ver.2</p>
<p>Annex A Revised Technical Specifications of the</p>	<p>Specification:</p> <ul style="list-style-type: none"> •LC/UPC – SC/UPC Duplex Single mode, 	<p>Specification:</p> <ul style="list-style-type: none"> •LC/UPC – SC/UPC Duplex Multimode,



Reference based on the OBD / Pre-Bid Conference / Site Inspection / Bid Bulletin	Description based on the OBD / Queries	New description / Clarification
Bid Bulletin No. 1 or OBD page 29 Item 1.11 (Section VII. Technical Specifications) Fiber Patch Cord	<ul style="list-style-type: none"> • 9/125 Patch Cord 2M,2.0mm, LSOH; •with Warranty 	<ul style="list-style-type: none"> •9/125 Patch Cord 2M,2.0mm, LSOH; •with Warranty <p>Kindly refer to the Annex "A"-Revised Section VII: Technical Specifications ver.2 and Annex "B"-Revised Form 2: Price Schedule ver.2</p>

Note: The Specifications are the minimum standards. The Bidders may submit higher or better specifications.

Reminder to Bidders:

1. Prospective Bidders may obtain further information from DAP and inspect the Bidding Documents at the address given below during Monday to Friday, **9:00AM to 4:30PM**.
2. A complete set of Official Bidding Documents (OBD) may be acquired by interested Bidders until **10 November 2023 (Fri)** from 09:00AM to 04:30PM, of the non-refundable applicable fee for the Bidding Documents, pursuant to the latest Guidelines issued by the GPPB, the cost for the Official Bidding Documents is **THREE THOUSAND FIVE HUNDRED PESOS (P3,500.00)**.

It may also be downloaded free of charge from the website of the Philippine Government Electronic Procurement System (PhilGEPS) and the website of the DAP. In order for bidders to participate, they shall pay the cost of the OBD not later than the scheduled Submission and Opening of the Bids.

3. Interested bidders must make payment to:

Account Name:	Development Academy of the Philippines
Account Number:	0671-0105-40
Bank:	Landbank of the Philippines
Branch of Account:	Pasig Capitol Branch

A copy of proof of payment must be emailed to DAP's Finance Department at: **cashtreasury@dap.edu.ph** for the issuance of Official Receipt (OR) and the



BAC Secretariat will provide assistance to the On-line Bidder for the creation of “**bidms account**” and dedicated site in the **bidms.dap.edu.ph**.

4. In compliance with GPPB Resolution No. 12-2020, all electronic-Bids must be duly received by the Bids and Awards Committee (BAC) Secretariat, through the designated bidms.dap.edu.ph secured account on or before **November 14, 2023 (Tue)** and not later than **10:00AM**. All bids must be accompanied by a bid security in any of the acceptable forms and in the amount stated in **ITB Clause 14**.
5. Bid opening shall be on **November 14, 2023 (Tue)** at **10:00AM** via Google Meet Platform. Electronic bids will be opened in the presence of the bidders’ authorized representative/s who are authorized to attend the proceedings. **LATE BIDS SHALL NOT BE ACCEPTED**.
6. The **DAP** reserves the right to reject any and all bids, declare a failure of bidding, or not award the contract at any time in accordance with the provisions of RA 9184 and its IRR, without thereby incurring any liability to the affected bidder or bidders.
7. For further information, please refer to:

MARIET RIZ M. BRADECINA

Manager, BAC Secretariat Division

DEVELOPMENT ACADEMY OF THE PHILIPPINES

GF DAP Bldg., San Miguel Avenue, Pasig City 1600

P.O. Box 12788 Ortigas Center, Pasig City 1600 Philippines

Telephone No. : (632) 8631-0921 loc. 133

BAC Secretariat email : **dapbacsec@dap.edu.ph**

Website address : **http://www.dap.edu.ph**

8. You may visit the following websites:

For downloading of Official Bidding Documents: <https://www.dap.edu.ph/invitation-to-bid/>

For online bid submission: <http://bidms.dap.edu.ph/page/>

For the guidance and information of all concerned.

ALAN S. CAJES

CHAIRPERSON, BIDS & AWARDS COMMITTEE 2 (SO No.2023-047)

>>>NOTHING FOLLOWS<<<

Bidder's LETTERHEAD

FORM 10 : TECHNICAL SPECIFICATIONS COMPLIANCE

Instructions: Bidders must state here either "Comply" or "Not Comply" against each of the individual parameters of each Specification stating the corresponding performance parameter of the equipment offered. Statements of "Comply" or "Not Comply" must be supported by evidence in a Bidders Bid and cross-referenced to that evidence. Evidence shall be in the form of the manufacturer's un-amended sales literature, unconditional statements of specification and compliance issued by the manufacturer, samples, independent test, data etc., as appropriate. A statement that is not supported by evidence or is subsequently found to be contradicted by the evidence presented will render the Bid under evaluation liable for rejection. A statement either in the Bidder's statement of compliance or the supporting evidence that is found to be false either during Bid evaluation, post-qualification or the execution of the Contract may be regarded as fraudulent and render the Bidder or supplier liable for prosecution.

Item	Specification	Qty	unit	Statement of Compliance
HARDWARES				
1.01 Dome IP Camera	Supply and installation of Dome IP CCTV Camera: <ul style="list-style-type: none"> • 4-MP 1/1.8" CMOS image sensor, low luminance, and high-definition image. • Outputs max. 4MP (2688×1520) @25/30 fps. • Built-in IR LED, and the max. illumination distance is 40 m. • ROI, SVC, SMART H.264+/H.265+, AI H.264/H.265, encoding after filter, flexible coding, applicable to various bandwidth and storage environments. • Rotation mode, WDR, 3D NR, HLC, BLC, digital watermarking, applicable to various monitoring scenes. • With deep learning algorithm, it supports: video metadata, smart sound detection, IVS, face detection, smart object detection, and people counting, etc. • Alarm: 2 in, 1 out; audio: 1 in, 1 out; supports max. 512 GB Micro SD card, built-in MIC. • 12 VDC/24 VAC/PoE power supply; ePoE. • IP67 and IK10 protection, heater. 	52.00	pcs	

Item	Specification	Qty	unit	Statement of Compliance
	<ul style="list-style-type: none"> • SMD 3.0. • with Warranty 			
1.02 Bullet IP Camera	Supply and installation of Bullet IP CCTV Camera: <ul style="list-style-type: none"> • 5MP (2592 × 1944) @20 fps, 1/2.7" image sensor, 24/7 Full-color image • SMART H.264+/H.265+, AI H.264/H.265 encoding • 2.8/3.6 mm fixed lens • Built-in warm light and IR LED; the max. IR illumination distance is 30m • Smart Dual Illumination Active Deterrence: Sound and light alarm • Support vehicle and human classification • Intelligent detection: Intrusion, tripwire • 12V DC/PoE power supply • IP67 protection • with Warranty 	21.00	pcs	
1.03 Smart POE Unmanaged Data Switch	Supply and installation of 24 port Smart POE Unmanaged Data Switch: <ul style="list-style-type: none"> • Smart POE Unmanaged Data Switch (The next generation Smart switch, provides 24 Port POE Switch with 2 SFP Port: Port 1–24: 24 × RJ45 10/100/1000 M (PoE); Port 25–26: 2 × RJ45 10/100/1000 (uplink); Port 27–28: 2 × SFP 1000 M (uplink) • support unified/ centralized management, lifetime license • Intelligent PoE • Red Port Supports BT 90W • All-giga Ports • Smooth Transmission • Wide Working Temperature: -10 to 55°C (14°F to 131°F) • Plug and Play • with Warranty 	6.00	pcs	
1.04 64 Channel Network Video Recorder	Supply and installation of Two (2) 64 Channel Network Video Recorder: <ul style="list-style-type: none"> • Smart H.265+/Smart H.264+/H.265/H.264 • support 64-ch IPC inputs, max resolution 12MP • 320Mbps input Bandwidth • Support 16-ch 1080p@30 fps self-adaptive decoding ability 	2.00	pcs	

Item	Specification	Qty	unit	Statement of Compliance
	<ul style="list-style-type: none"> • 8 SATA III ports, up to 10 TB for a single HDD • 2 VGA, 2 HDMI, 2 RJ45(1000M) • Supports ONVIF protocol, DHCP, P2P function • 1-channel fisheye dewarping (AI by NVR) • AI by Camera: Perimeter protection; face detection and recognition; SMD Plus; video metadata; ANPR; people counting; heat map • with Warranty 			
1.05 Data Cabinet	<p>Supply and installation of Data Cabinet:</p> <ul style="list-style-type: none"> • Data Cabinet will be install at the following areas: <ul style="list-style-type: none"> ✓ PABX Room (28U / 4 feet Data Cabinet); ✓ Workshop Electrical Room (9U / 1.5 feet Data Cabinet); ✓ Electrical Room at RFS Office (9U / 1.5 feet Data Cabinet); and ✓ Basement Electrical Room (12U / 2 feet Data Cabinet) • (9U, 12U, & 28U) 19" standard opening; Framing and Paneling Gauge#16, Black (powder-coated); Adjustable with mounting railings; Plexiglas Front Door with Lock; • Detachable Side Panels with Lock & Ventilation; Detachable Back Panels with Lock; With 1 unit Vertical powerstrip 4 CO's, 3 prong, 220V, 20 Amp fuse; With 1 unit Vertical Cable Manager at the back ring type; and with 4 pcs. Exhaust Fan at the top panel • with Warranty 	4.00	pcs	
1.06 10TB Hard Disk Drive	<ul style="list-style-type: none"> • 10TB Surveillance Hard Disk Drive SATA III; • with Warranty 	16.00	pcs	
1.07 Fiber Patch Cable End to End (300M)	<ul style="list-style-type: none"> • LC with Standard Boots; • LC 12mm/18mm with Short Boots; • SC 25mm with Short Boots • Polish Type SMF: UPC-UPC; UPC-APC; APC-APC; MMF: UPC-UPC Connector Ferrule Zirconia Ceramic Cable Outside Diameter Duplex: 	1.00	roll	

Item	Specification	Qty	unit	Statement of Compliance
	1.6/2.0/3.0mm, Simplex: 0.9/2.0/3.0mm, Interchangeability ≤0.2dB, Vibration ≤0.2dB <ul style="list-style-type: none"> • with Warranty 			
1.08 Fiber Optical Module	<ul style="list-style-type: none"> • Multimode single fiber; LC port; 1310nm sending, and 1550nm receiving; Transmission distance up to 20km; • with Warranty 	6.00	pcs	
1.09 55" LED 4K Monitor	<ul style="list-style-type: none"> • 55" 4K UHD LED Monitor; • Industrial level LCD panel, suitable for continuous 24/7 operation • 4K Ultra-HD resolution • Using tamper-proof metal housing • Built-in 3D COMB filter and 3D noise reduction • 6ms response time for no motion blur or ghosting • 1.07G colors, for a realistic and immersive visual experience • High-fidelity digital processing • 178°/178° wide uninterrupted viewing angle • With Bracket • with Warranty 	2.00	pcs	
1.10 Fiber Patch Panel	<ul style="list-style-type: none"> • Category 6 180° 1U 24-Port Unshielded Patch Panel, Dual Type IDC, W/ Two Cable Management Bars, Black; • with Warranty 	6.00	pcs	
1.11 Fiber Patch Cord	<ul style="list-style-type: none"> • LC/UPC – SC/UPC Duplex Multi mode, • 9/125 Patch Cord 2M,2.0mm, LSOH; • with Warranty 	80.00	pcs	
1.12 UTP CAT6 Cable	<ul style="list-style-type: none"> • Supply & Installation of Universal Twisted Pair (UTP) Category 6 (CAT 6) Cable, 305 meter or 1000 ft. per box; • with Warranty 	1	lot	
1.13 LC Pigtail	<ul style="list-style-type: none"> • Multimode OM3 Simplex 1M, 4.0 mm, LSOH; • with Warranty 	25.00	pcs	
1.14 Smart-UPS Power Supply	<ul style="list-style-type: none"> • Supply & Installation of High frequency, On-line Smart UPS, Rack-Tower Convertible, Hot-Swappable Battery Module Design, • 3KVA/2.7 KW, PF: 0.9, 72Vdc, with 6pcs X 9Ah built-in battery, with 	1.00	pc	

Item	Specification	Qty	unit	Statement of Compliance
	USB, RS232, EPO, SNMP function Port <ul style="list-style-type: none"> with Warranty 			
1.15 RJ45	<ul style="list-style-type: none"> Supply & Installation of RJ45 	1.00	lot	
1.16 Cable Manager	<ul style="list-style-type: none"> 24 P, 1 U Cable Manager 	15.00	sets	
ROUGHING-IN INSTALLATION MATERIALS				
1.17	<ul style="list-style-type: none"> Supply, installation and termination of Fiber Optic 4 core multimode outdoor type 	1.00	Lot	
1.18	<ul style="list-style-type: none"> Supply, installation and termination of conduits, structured cabling installation of UTP CAT 6 Cable and Fiber Optic Cable, cable trays around the Main Conference Building, and in the side of Connecting Hallway, cable pulling, CCTV Weatherproof Conduit Boxes (100X100X70) (73 pcs), fittings, boxes, support/hangers, connectors, accessories, testing, commissioning, and decommissioning. 	1.00	Lot	
Area 1 (Data Cabinet Installation at PABX Room)				
1.19	Installation of Data Cabinet with height 28U / 4 ft., Powder Coated, Black, perforated two side panels, Perforated back, and front Door; German cooling fan, with three pins German type plug, 1wire,4 fans (cable length, 1M); 1U 19" power distribution unit, w/ aluminum body, US (NEMA5-15P) Plug, 6 universal outlets, w/LED master switch at PABX Room;	1.00	Lot	
1.20	Installation, testing, and commissioning of Two (2) Smart PoE Managed Switch, Two (2) Network Video Recorders, and Rackmount Smart-UPS power supply to the Data Cabinet;	1.00	Lot	
1.21	Wall installation, testing, and commissioning of Two (2) 55" LED 4K Monitors connected to NVR located at PABX Room;	1.00	Lot	
1.22	Installation of Roughing-Ins (cable trays, conduits and other necessary accessories).	1.00	Lot	
1.23	Supply, Installation, Cable Wiring	1.00	Lot	

Item	Specification	Qty	unit	Statement of Compliance
	Termination, Testing and Commissioning of New Electrical Panel Board with 1 pc. Main Circuit Breaker (100 Amperes) Bolt-On Type and 8 pcs. Branch Circuit Breakers Bolt-On Type (1 pc. 20 Amperes for the Lighting Circuits, 1 pc. 30 Amperes for the Air Conditioning Unit, 1pc. 30 Amperes for the Convenience Outlets, 1 pc. 40 Amperes for the UPS of the existing IT Network Infrastructure, 1pc. 40 Amperes or higher for the UPS of CCTV Surveillance System, other 3 pcs. 20 Amperes Circuit Breaker for Spare Provisions)			
Area 2 (Lower Lobby Electrical and Mechanical Room IP CCTV Positions)				
1.24	Installation of Roughing-Ins (cable trays, conduits and other necessary accessories)	1.00	Lot	
1.25	Installation of Two (2) units of Indoor Dome IP CCTV Cameras at the Mechanical Room and Electrical Room Entrance;	1.00	Lot	
1.26	Wire Pulling, Laying, and Structured cabling from Smart PoE Network Switch at PABX room (for IP CCTV Cameras) to Mechanical and Electrical Room located at the Lower lobby (Camera No. 74 & 75) based on Floor Plan/ Layout. (See attached plan/ layout)	1.00	Lot	
Area 3 (Data Cabinet Installation at Electrical room located at the RFS Office)				
1.27	Installation of One (1) unit Data Cabinet with specifications of 600 x 450, 9u/1.5Ft. 90.7kg max. loading capacity), toughed glass door w/ spring lock, detachable side panel (not vented), 2 pcs. Exhaust fan w/ cable entry at the top panel, 6 outlet PDU w/ 3.0mm cable length (220V,3prong,10A), powder coated finish, with exhaust fans at the Electrical room located at the RFS Office area; with provision of 1KVA UPS Floor/Wall Mount (4x Universal Outlets, Cable Length: 1.20 mtrs, Rated Power: 600 Watts, HxWxD: 9.25 x 16.05 x 30.5 cm	1.00	Lot	
1.28	Installation, testing, and commissioning of One (1) Smart PoE Managed Switch to	1.00	Lot	

Item	Specification	Qty	unit	Statement of Compliance
	the Data Cabinet;			
1.29	Installation of Roughing-Ins (cable trays, conduits and other necessary accessories).	1.00	Lot	
Area 4 (Data Cabinet Installation at Electrical room located at the Workshop Area)				
1.30	Installation of One (1) unit Data Cabinet with specifications of 600 x 450, 9u/1.5Ft. 90.7kg max. loading capacity), toughed glass door w/ spring lock, detachable side panel (not vented), 2 pcs. Exhaust fan w/ cable entry at the top panel, 6 outlet PDU w/ 3.0mm cable length (220V,3prong,10A), powder coated finish, with exhaust fans at the Electrical room located at the Workshop Area; with provision of 1KVA UPS Floor/Wall Mount (4x Universal Outlets, Cable Length: 1.20 mtrs, Rated Power: 600 Watts, HxWxD: 9.25 x 16.05 x 30.5 cm	1.00	Lot	
1.31	Installation, testing, and commissioning of One (1) Smart PoE Managed Switch to the Data Cabinet.	1.00	Lot	
Area 5 (Dining and Basement Left-wing and Right-wing area, Engineering and Parking area IP CCTV Positions)				
1.32	Installation of Roughing-Ins (cable trays, conduits and other necessary accessories);	1.00	Lot	
1.33	Installation of Seventeen (17) units of Indoor Dome IP CCTV Cameras and Eight (8) Outdoor Bullet IP CCTV Cameras;	1.00	Lot	
1.34	Wire Pulling, Laying, and Structured cabling from Smart PoE Network Switch at Electrical room located at Dining lobby of two (2) runs each UTP Cable (for IP CCTV Cameras) to Dining Area (No. 70, 47, 48, 49, 71, 46, 53, 68, 54), and to Basement Area (No. 45, 44, 43, 42, 40, 61,41) based on Floor Plan/ Layout. (See attached plan/ layout);	1.00	Lot	
1.35	Another Wire Pulling, Laying, and Structured cabling from Smart POE Network Switch at Electrical room located at Dining lobby of two (2) runs each UTP Cable (for IP CCTV Cameras) to Engineering, Staff lounge and Side Parking area (No. 55, 56, 59, 69, 72, 73, 76, 77, 78) based on Floor Plan/ Layout.	1.00	Lot	

Item	Specification	Qty	unit	Statement of Compliance
	(See attached plan/ layout);			
1.36	Conduction of Wire Termination/s along with appropriate Testing & Commissioning and De-commissioning of old wires and hardware.	1.00	Lot	
Area 6 (2nd-floor and 3rd floor Left-wing and Right-wing IP CCTV Positions)				
1.37	Installation of Roughing-Ins (cable trays, conduits and other necessary accessories);	1.00	Lot	
1.38	Installation of Fifteen (15) units of Indoor Dome IP CCTV Cameras;	1.00	Lot	
1.39	Wire Pulling, Laying, and Structured cabling from Smart PoE Network Switch at Electrical room located at Dining lobby of two (2) runs each UTP Cable (for IP CCTV Cameras) to 2nd floor Area (No. 24, 33, 34, 35, 36, 37, 38, 39), and to 3rd floor Area (No. 26, 27, 28, 29, 30, 31, 32) based on Floor Plan/ Layout. (See attached plan/ layout);	1.00	Lot	
1.40	Conduction of Wire Termination/s along with appropriate Testing & Commissioning and De-commissioning of old wires and hardware.	1.00	Lot	
Area 7a (Upper Lobby and Function Room Area IP CCTV Positions)				
1.41	Installation of Roughing-Ins (cable trays, conduits and other necessary accessories);	1.00	Lot	
1.42	Installation of Thirteen (13) units of Indoor Dome IP CCTV Cameras and Five (5) Outdoor Bullet IP CCTV Cameras;	1.00	Lot	
1.43	Wire Pulling, Laying, and Structured cabling from Smart PoE Network Switch at Electrical room located in front of Workshop Male CR of two (2) runs each UTP Cable (for IP CCTV Cameras) to Upper lobby and Function room Area (No.1, 9, 10, 11, 12, 13, 14, 15, 16, 17, 18, 19, 20, 21, 22, 23, 25, 52) based on Floor Plan/ Layout. (See attached plan/ layout);	1.00	Lot	
1.44	Conduction of Wire Termination/s along with appropriate Testing & Commissioning and De-commissioning of old wires and hardware.	1.00	Lot	
Area 7b (Upper Lobby and Function Room Area IP CCTV Positions)				
1.45	Installation of Roughing-Ins (cable trays, conduits and other necessary	1.00	Lot	

Item	Specification	Qty	unit	Statement of Compliance
	accessories);			
1.46	Installation of Two (2) units of Indoor Dome IP CCTV Cameras and Two (2) Outdoor Bullet IP CCTV Cameras;	1.00	Lot	
1.47	Wire Pulling, Laying, and Structured cabling from Smart PoE Network Switch located at PABX of two (2) runs each UTP Cable (for IP CCTV Cameras) to Upper lobby and Function room Area (No.7, 8, 50, 51) based on Floor Plan/ Layout. (See attached plan/ layout);	1.00	Lot	
1.48	Conduction of Wire Termination/s along with appropriate Testing & Commissioning.	1.00	Lot	
Area 8 (Lower Lobby and Side Parking Area IP CCTV Positions)				
1.49	Installation of Roughing-Ins (cable trays, conduits and other necessary accessories);	1.00	Lot	
1.50	Installation of Five (5) units of Indoor Dome IP CCTV Cameras and Four (4) Outdoor Bullet IP CCTV Cameras;	1.00	Lot	
1.51	Wire Pulling, Laying, and Structured cabling from Smart PoE Network Switch located at PABX of two (2) runs each UTP Cable (for IP CCTV Cameras) to Upper lobby and Function room Area (No.2, 3, 4, 5, 6, 57, 58, 60, 62) based on Floor Plan/ Layout. (See attached plan/layout);	1.00	Lot	
1.52	Conduction of Wire Termination/s along with appropriate Testing & Commissioning.	1.00	Lot	
General Requirements				
1.53	Mobilization of Manpower, equipment, tools, and temporary facilities. Provide temporary field office with health/safety/first aid facility and utilities with corresponding sub-meters to be connected to sub-meters to be connected to supply of water and electricity. Provide Personal Protective Equipment (PPE) and other Safety & Health Paraphernalia.	1.00	Lot	
1.54	Obtain building permits, and other necessary permits such as Electronic and/or Electrical Permits as required for the project;	1.00	Lot	
1.55	Supply and deliver all devices needed to	1.00	Lot	

Item	Specification	Qty	unit	Statement of Compliance
	install the upgraded CCTV System such as but not limited to: IP CCTV Cameras, Network Video Recorder, Wires and Cables, Data Switches, Monitors, Hard Disk Drives, etc.;			
1.56	Install piping, structured cabling, cable trays, hangers, base mountings, cabinets, accessories, CCTV devices such as cameras and video recorder, etc. in accordance to correct engineering standards and material specifications as cited in its operating manual;	1.00	Lot	
Turn-Over and Acceptance				
1.57	End to End Termination, Testing including Fluke testing and Optimal Time-Domain Reflectometer (OTDR) & Commissioning, Fiber Optics, Networking, Fiber Optic Cable Design, and Installation, Fiber Termination and Fusion Splicing (FOC Fusion Machine), FOC Patch Panel Splicing, and Termination, Continuity Testing Power source and Light Meters Configuration, Installation / termination and adjustment, and Programming, Decommissioning and Turn-over of all identified obsolete CCTV Cameras, Cablings, and other accessories, and system integration and configuration of existing CCTV System at Cottages (via internet/data connection) for the entire IP CCTV system. Repair of three (3) identified CCTV units at Cottages. Supply and installation of 4+2 100 Mbps Long-Range PoE Switch (Model: WI-PS205H).	1.00	Lot	
1.58	Clean and restore the areas affected during and after the installation and testing including rectification/correction of punch-listed items;	1.00	Lot	
1.59	Demobilization. Dismantling of temporary facilities, pullout of debris resulting from the conduct of the works	1.00	Lot	
1.60	The Contractor/Supplier shall provide a quarterly preventive maintenance checkup, free of charge for at least one year after the system has been commissioned and accepted by DAP;	1.00	Lot	

Item	Specification	Qty	unit	Statement of Compliance
1.61	<p>Submission of Post Documentary requirements:</p> <ul style="list-style-type: none"> • Original Copy of "Record Drawings/Plans" complete with legend, technical specifications, and measurements; • Compilation of Periodic Project Reports including photo documentations before, during, and after implementation works. Each photo-documentation should have the date and time stamps, in jpg-format; • As-Built Plans: <ul style="list-style-type: none"> ✓ Six (6) set of original copy in 30" x 40" sheets (drawn on a mylar sheets) signed and sealed by appropriate professional and/or engineers; ✓ Six (6) sets of blue print copies in 30" x 40" sheets signed and sealed by appropriate professional architects and engineers; and ✓ Complete set of electronic files in USB Thumb Drive of "AS-BUILT PLANS" in PDF and CAD format. • Manuals of all supplied and installed equipment comprising the Technical Specifications and Product Installation Instructions; • Operational Brochure/s; • Maintenance Manuals, including draft of Process and Work Instruction Manual (PAWIM) for the use of DAPCC Maintenance Personnel; • Conduct training of the DAP maintenance personnel who will operate and maintain all equipment, facilities and utilities installed; and • Warranty Certificate that complies to the GCC Clause 5 Warranty under Section V Special Conditions of Contract 	1.00	Lot	

DAPCC PROPOSED CCTV LOCATION, VIEW, AND NUMBER

Location	Area (based on Floor Plan)	Description of View	Nature of Action			Remarks
			Existing Camera In (Upgrade/ Repair)	New camera (Addition)	View angle (Addition)	
1. Main Gate / Guard House	Upper	Main gate, guard house, & BLP ATM. Cameras should have (directly) facing vehicles.	1		Ang budget	
2. Lower Lobby Driveway	Lower	Lower lobby stairs & Audit Main Desk.	1		Ang budget	
3. Lower Lobby 3 Entrance	Lower	Lower lobby, & entrance. Camera at Lower Lobby Stairs.	1		Ang camera	
4. Lower Lobby 2 Entrance	Lower	Lower lobby, & entrance. Camera at Lower Lobby Stairs.	1	1	Ang camera	
5. Auditorium 3	Lower	Main floor, main entrance & side emergency exit. Camera unit is floor area & stage. Upgrade the camera to wide-angle.	1		Ang camera	
6. Auditorium 2 (Right - Left Side)	Lower	Main floor, main entrance & side emergency exit. Camera unit is balcony area. Camera unit will be mounted at the Ladies Confort	1	3	Ang camera	
7. Auditorium 2 (Right - Left Side)	Upper	balcony area. Camera unit will be mounted at the entrance.	1	3	Ang budget	
8. Auditorium 4 (No. Lobby 2)	Upper	Upgrade the camera to wide angle camera.	1		Ang camera	
9. Front Office	Upper	Upper lobby (left side) - Prayer room area.	1		Ang camera	
10. Upper Lobby 3 Entrance P.A. Side	Upper	Upper lobby (right side) - Prayer room area.	1		Ang camera	
11. Upper Lobby 2 (Right Side)	Upper	Upper lobby (right side) - Prayer room area.	1		Ang camera	
12. Upper Lobby 3 (Right Shop corner side)	Upper	Upper lobby (right side) - Prayer room area.	1	1	Ang camera	
13. Upper Lobby 4 (Right Side Entrance)	Upper	Upper lobby (right side) - Prayer room area.	1	1	Ang budget	
14. Pathway outside (side of conference 5-8)	Upper	Upper lobby (right side) - Prayer room area.	1	3	Ang budget	
15. Workshop Area (Outside)	Upper	Upper lobby (right side) - Prayer room area.	1	1	Ang budget	
16. College Atrium	Upper	Upper lobby (right side) - Prayer room area.	1	1	Ang camera	
17. Workshop Hallway (Male CR Side)	Upper	Upper lobby (right side) - Prayer room area.	1	1	Ang camera	
18. Workshop Hallway (Female CR Side)	Upper	Upper lobby (right side) - Prayer room area.	1	1	Ang camera	
19. Conference 1 - 4 Hallway	Upper	Upper lobby (right side) - Prayer room area.	1	1	Ang camera	
20. Conference 4 - 1 Hallway	Upper	Upper lobby (right side) - Prayer room area.	1	1	Ang camera	
21. Admin Hallway	Upper	Upper lobby (right side) - Prayer room area.	1	1	Ang camera	
22. OP to Conference 3 Hallway	Upper	Upper lobby (right side) - Prayer room area.	1	1	Ang camera	
23. Conf 5, 8 Hallway	Upper	Upper lobby (right side) - Prayer room area.	1	1	Ang camera	
24. Connecting hallway 1	2nd & 3rd Floor	Upper lobby (right side) - Prayer room area.	1	1	Ang budget	
25. Connecting hallway 2	Upper	Upper lobby (right side) - Prayer room area.	1	1	Ang camera	
26. 1st Floor Emergency Exit - Left Wing	2nd & 3rd Floor	Upper lobby (right side) - Prayer room area.	1	1	Ang camera	
27. 1st Floor Left Wing Hallway 1	2nd & 3rd Floor	Upper lobby (right side) - Prayer room area.	1	1	Ang camera	
28. 1st Floor Left Wing Hallway 2	2nd & 3rd Floor	Upper lobby (right side) - Prayer room area.	1	1	Ang camera	
29. 1st Floor Right Wing Hallway 1	2nd & 3rd Floor	Upper lobby (right side) - Prayer room area.	1	1	Ang camera	
30. 1st Floor Right Wing Hallway 2	2nd & 3rd Floor	Upper lobby (right side) - Prayer room area.	1	1	Ang camera	
31. 1st Floor Emergency Exit - Right Wing	2nd & 3rd Floor	Upper lobby (right side) - Prayer room area.	1	1	Ang camera	
32. 3rd Floor Middle, Lobby	2nd & 3rd Floor	Upper lobby (right side) - Prayer room area.	1	1	Ang camera	
33. 1st Floor Left Wing Hallway 1	2nd & 3rd Floor	Upper lobby (right side) - Prayer room area.	1	1	Ang camera	
34. 1st Floor Left Wing Hallway 2	2nd & 3rd Floor	Upper lobby (right side) - Prayer room area.	1	1	Ang camera	

1	2 nd Floor Right Wing Hallway 3	2nd & 3rd Floor	Right hallway from Room 201 to 218.	1		1	drop above
2	2 nd Floor Right Wing Hallway 2	2nd & 3rd Floor	Right hallway from Room 218 to 201.	1		1	drop above
3	2 nd Floor Emergency Exit (Left Wing)	2nd & 3rd Floor	Left hallway emergency exit stairway.	1		1	drop above
4	2 nd Floor Emergency Exit (Right Wing)	2nd & 3rd Floor	Right hallway emergency exit stairway.	1		1	drop above
5	2 nd Floor Middle Lobby	2nd & 3rd Floor	2nd floor lobby stairs from connecting hallway, & dining floor.	1		1	drop above
6	Basement 1 (101 - 106)	Basement & Dining	Hallway from 101-106. Camera will be installed near 101.	1		1	drop above
7	Basement 2 (Emergency Exit 106 - 101)	Basement & Dining	Emergency exit at Basement Hallway 106 - 101.	1		1	drop above
8	Basement 3 Lobby Right Corner	Basement & Dining	Game room & lobby. Camera will be installed at the Right Corner	1		1	drop above
9	Basement 4 Left Wing 107 - 118	Basement & Dining	Linens area & stockroom door. Hallway room 107 to 118.	1		1	drop above
10	Basement 5 Left Wing 118 - 107	Basement & Dining	From Clinic area. Hallway room from 118 - 107	1		1	drop above
11	Basement 6 (Clinic Area)	Basement & Dining	Clinic entrance and hallway going basement.	1		1	drop above
12	Dining & Workshop 5 Side	Basement & Dining	Dining Area. Camera installed near the 193 office.	1		1	drop above
13	Dining & Main Entrance	Basement & Dining	Dining B floor area. Camera installed near workshop 5.	1		1	drop above
14	Dining Lobby	Basement & Dining	Waiter's counter table, stairs going up to dorm area, CR	1		1	drop above
15	Barbecue Plaza B (Right)	Upper	Barbecue Plaza B right side. Connecting hallway steps.	1		1	drop buffer
16	Barbecue Plaza B (Left)	Upper	Barbecue Plaza B Left side. Camera will be installed at the side of	1		1	drop buffer
17	Barbecue Plaza A	Upper	Back of conference 4 to dining A side entrance. Camera will be	1		1	drop buffer
18	Backen Entry Front	Basement & Dining	Side entrance (bique Plaza A side).	1		1	drop buffer
19	Richie Stockroom Area	Basement & Dining	Stock room area hallway & entrance.	1		1	drop above
20	Staff Lounge Area	Lower	Staff lounge & driveway. Camera should be wide angled.	1		1	drop buffer
21	EMS Office & Workshop	Lower	Road from EMS office, & DMPPC car parking area.	1		1	drop buffer
22	Parking A - Near Gate 2	Lower	Camera will be installed at Street light post pointing at Side	1		1	drop buffer
23	Parking B - Near Gate 2	Lower	Camera will be installed at Street light post pointing at DMPPC	1		1	drop buffer
24	Parking C - Near Clinic	Lower	Camera to be upgraded to drop buffer type pointing at	1		1	drop buffer
25	Parking D - Near Clinic	Lower	Camera to be installed at West post pointing at See Parking.	1		1	drop above
26	Gym	Basement & Dining	Floor area of gym & entrance.	1		1	drop above
27	Cashier	Lower	Inside new cashier's office, previously Business Center	1		1	to be maintained
28	Gallery Hallway	Lower	Hallway & entrance of gallery, entrance of IT room & PABX.	1		1	to be maintained
29	Gallery Inside 1	Lower	National Artist Collection area	1		1	to be maintained
30	Gallery Inside 2	Lower	Gallery middle area side A	1		1	to be maintained
31	Gallery Inside 3	Lower	Gallery middle area side B	1		1	to be maintained
32	PARK	Lower	Floor area of PABX room & critical installations.	1		1	to be maintained
33	Kitchen Inside	Basement & Dining	Main Kitchen Area	1		1	drop above
34	Driveway @ Engineering Office Area	Lower	Camera will be placed @ the Engineering office pointing the	1		1	drop buffer
35	Emergency exit beside Workshop 5	Basement & Dining	Camera will be placed @ the side of Workshop 5 Emergency	1		1	drop above
36	Dining A Entrance	Basement & Dining	Camera will be installed near the Dining A main entrance.	1		1	drop above
37	Staff Lounge Inside	Lower	Camera is installed inside the Staff Lounge	1		1	drop above
38	EMS Workstation (Generator Area)	Lower	Camera will be installed inside EMS Workstation pointing to the	1		1	drop buffer
39	Electrical Room (Lower Lobby)	Lower (Mech. & Elect.)	Camera will be installed inside Electrical room at Lower Lobby	1		1	drop buffer
40	Mechanical Room (Lower Lobby)	Lower (Mech. & Elect.)	Camera will be installed inside Mechanical room at Lower Lobby	1		1	drop buffer
41	Sewage Treatment Plant (STP)	Lower	Camera will be installed at Utility Center, pointing at STP.	1		1	drop buffer
42	Utility Center (near Engineering Building)	Lower	Camera will be installed at the Utility Center area.	1		1	drop buffer
43	Engineering Workshop area	Lower	Camera will be installed at Engineering workshop area.	1		1	drop buffer
44	Front Parking Driveway (Main Gate)	Cottage Area	Camera installed at Landbank ATM (Main Gate) pointing at Front	1		1	to be maintained
45	Cottage Driveway	Cottage Area	Camera installed at Landbank ATM pointing at Cottage Driveway	1		1	to be maintained

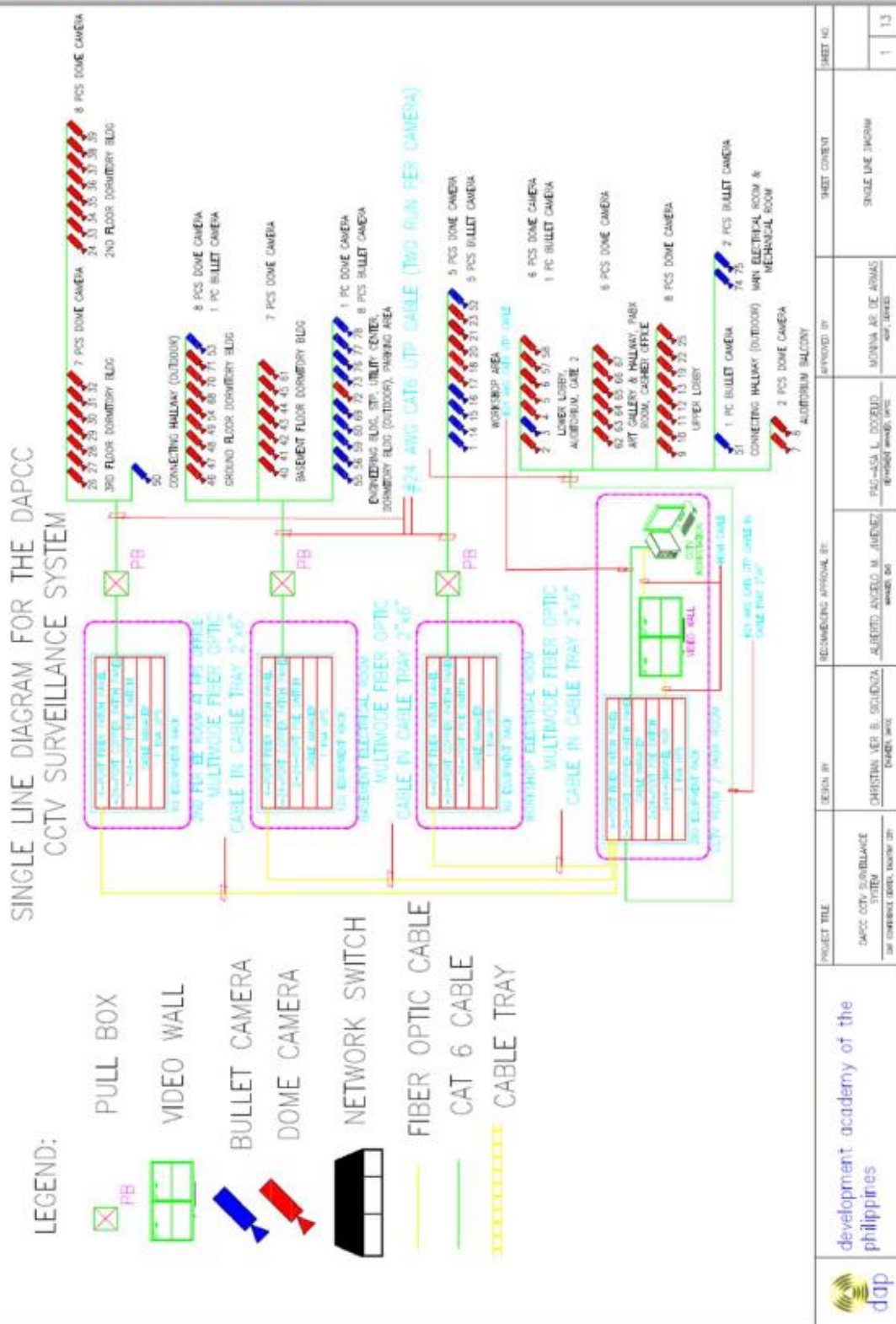
❑ Cottage 5	Cottage Area	Cameras installed at Cottage 5 pointing at Porunda	1		to be maintained
❑ Cottage 1 (Back Area)	Cottage Area	Camera installed at the back of Cottage 1 pointing at perimeter	1		to be maintained
❑ Cottage 2 (Back Area)	Cottage Area	Cameras installed at the back of Cottage 2 pointing at perimeter	1		to be maintained
❑ Cottage 3 (Back Area)	Cottage Area	Cameras installed at the back of Cottage 3 pointing at the back of Cottage 4 and Cottage Electrical and Data Room area.	1		to be maintained
❑ Housekeeping Storage Room	Cottage Area	Camera installed at the side of Housekeeping storage rooms wall	1		to be maintained
❑ Cottage 5 (Back Area)	Cottage Area	Cameras installed at the back of Cottage 5 pointing at HBS ramp	1		to be maintained
		Total	43	32	11

total no. of cameras

Type of Camera to be Purchased	No. of Cameras
4mp Bullet Type Camera	26
4mp Dome Type Camera	47
Total No. of Cameras to be purchased:	73
No. of Cameras to be Maintained:	13

AREAS:	No. of Cameras
Upper	22
Lower	23
Lower (Mech. & Elect. Room)	2
Basement & Dining	16
2nd & 3rd Floor	15

DAPCC PROPOSED CCTV SURVEILLANCE SYSTEM LAYOUTS

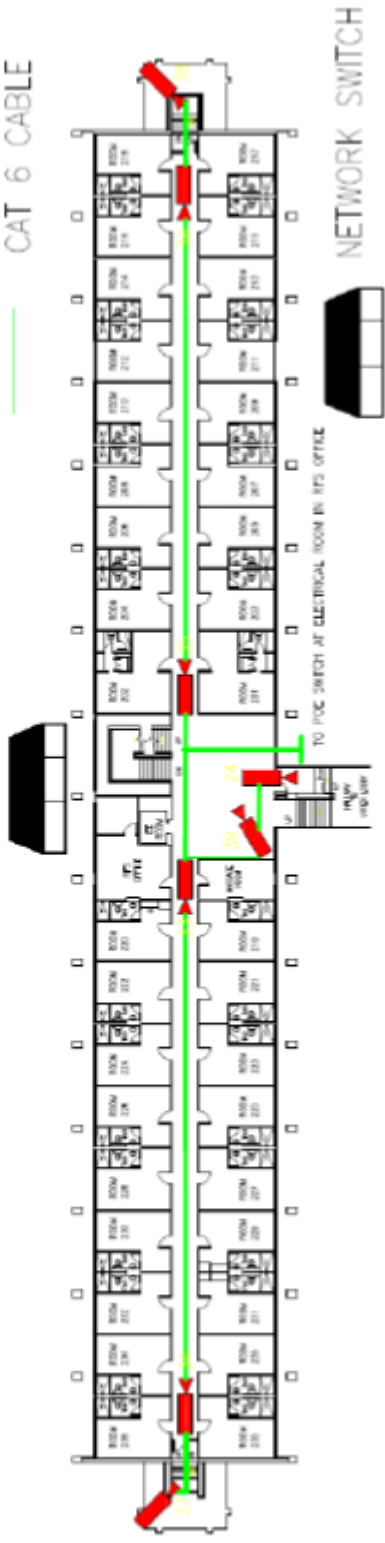


	development academy of the philippines	PROJECT TITLE DAPCC CCTV SURVEILLANCE SYSTEM <small>DAP COMMERCIAL CENTER, NAJAF ST.</small>	DESIGN BY CHRISTIAN VER B. SOLIVENZA <small>ENGINEER, REG.</small>	RECOMMENDING APPROVAL BY ALBERTO ANGELO M. AMENYET <small>MANAGER, DE</small>	APPROVED BY PAG-ASA L. DOBEBID <small>PROJECT MANAGER, OFFICE</small>	MONINA AP DE ARMAS <small>OFF. USES</small>	SHEET CONTENT SINGLE LINE DRAWING	SHEET NO. 1 / 13
--	--	--	--	---	---	--	--------------------------------------	---------------------



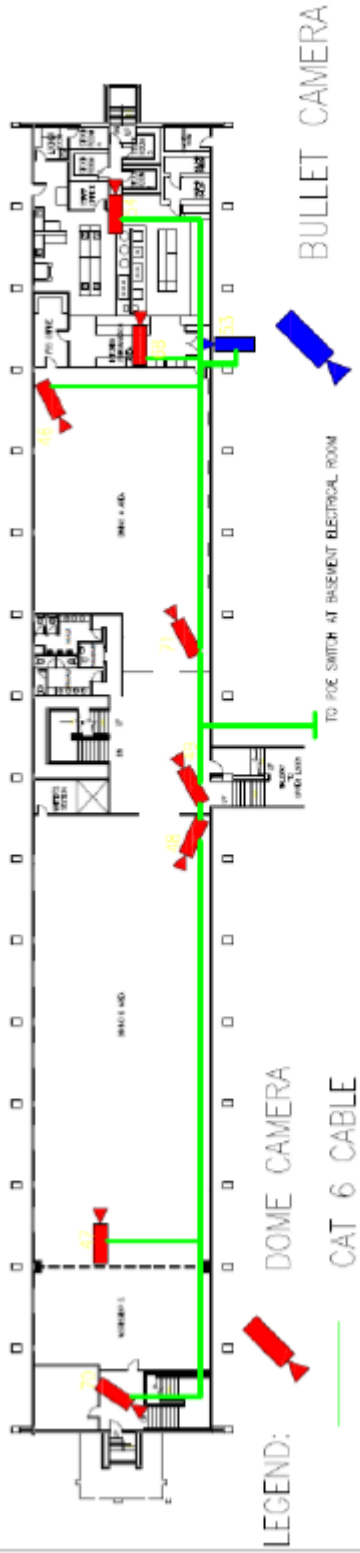
3RD FLOOR DORMITORY BLDG

LEGEND:  DOME CAMERA
 CAT 6 CABLE

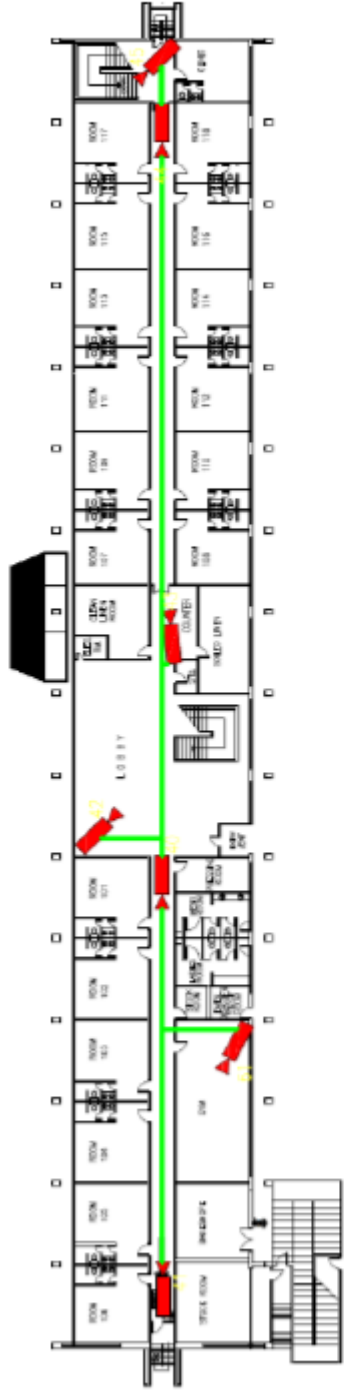


2ND FLOOR DORMITORY BLDG

 development academy of the philippines	PROJECT TITLE	DESIGN BY	COORDINATING APPROVAL BY	APPROVED BY	SHEET CONTENT	SHEET NO.
	DAPCC CCTV SURVEILLANCE SYSTEM 3RD FLOOR DORM. SURV. 071	CHRISTINA VER B. SOLERENA DESIGN LEAD	ALBERTO ANGELO M. JIMENEZ SENIOR AEC	PAO-SOL L. DOSSIDO SENIOR ARCHITECT	MONINA AN DE ARMAS AEC-LEADER	2ND FLOOR & 3RD FLOOR (PROPOSED OVERHEAD CABLES & CCTV ROOMS)

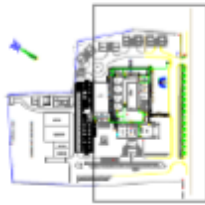


GROUND FLOOR DORMITORY BLDG











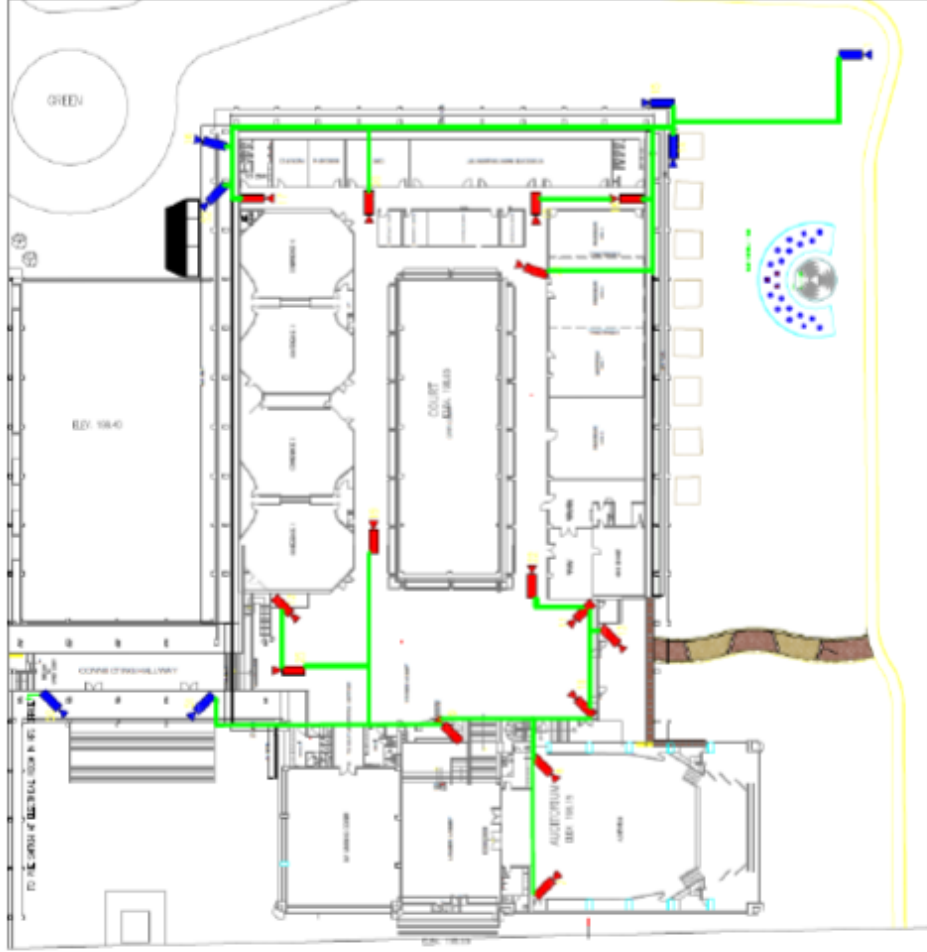
BASEMENT FLOOR DORMITORY BLDG

PROJECT FILE	DESIGN BY	RECOMMENDING APPROVAL BY	APPROVED BY	SHEET CONTENT	SHEET NO.
SMAC CITY SURVEILLANCE SYSTEM BY CHRISTIAN VERBA, MARCH 2017	CHRISTIAN VERBA B. SOLORI ARCHITECT	ALBERTO ANGELO M. JACINTO ARCHITECT	MARINA DE BE ANNAS ARCHITECT	GROUND & BASEMENT FLOOR (PROVIDED STRUCTURED CABLES & CCTV POINTS)	3

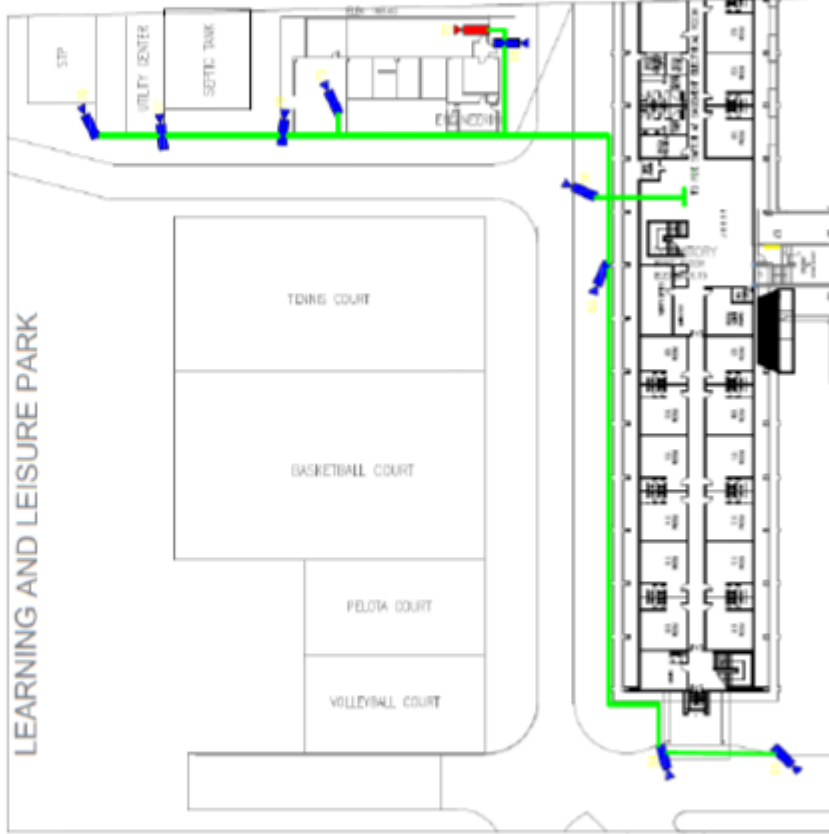


LEGEND:

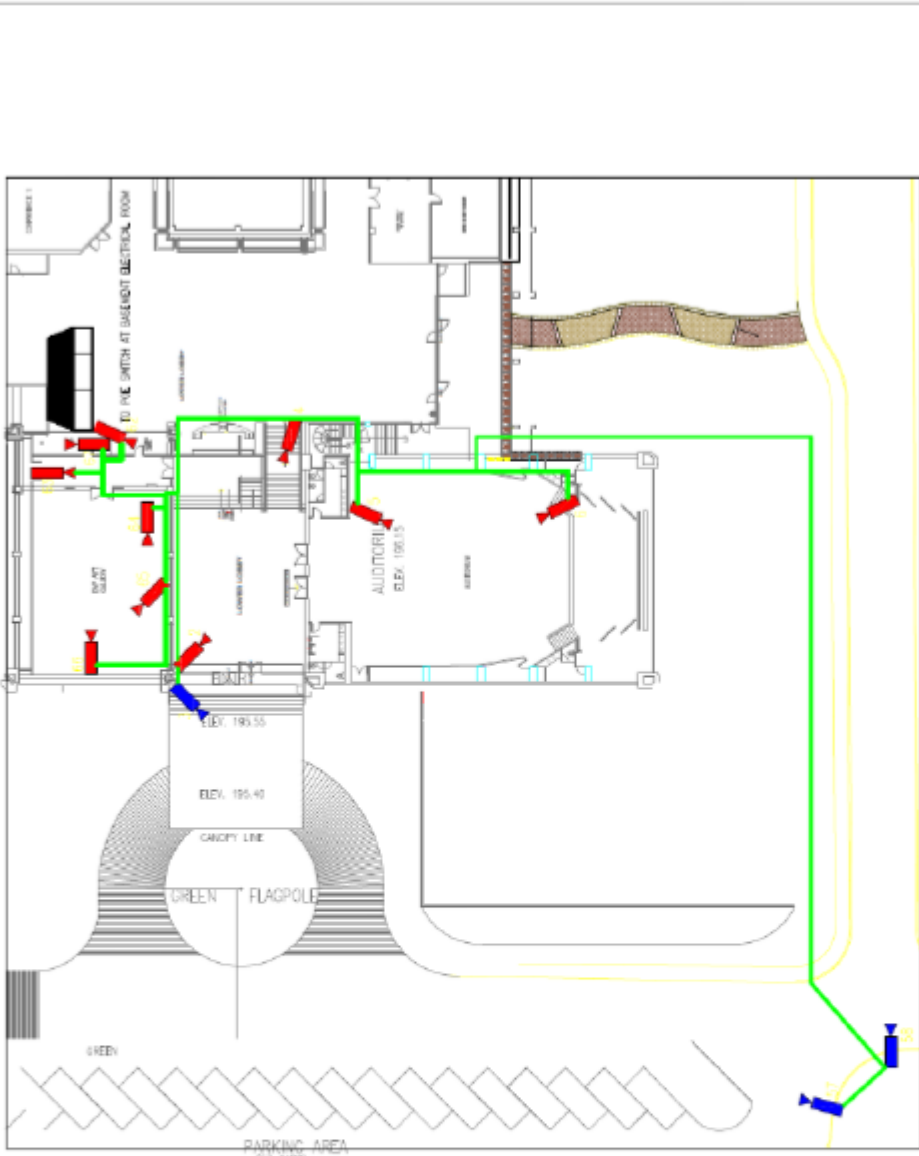
-  PULL BOX
-  VIDEO WALL
-  BULLET CAMERA
-  DOME CAMERA
-  NETWORK SWITCH
-  FIBER OPTIC CABLE
-  CAT 6 CABLE
-  CABLE TRAY







 development academy of the philippines	PROJECT TITLE SMKC CITY SURVEILLANCE SYSTEM <small>(BY CONSTRUCTION, BUILDING OFF)</small>	DESIGN BY CHRISTIAN ABER B. CEBULENZA <small>DESIGNER, SMKC</small>	RECOMMENDING APPROVAL BY ALBERTO ANGELO M. ARINERIZ <small>MANAGER, SMKC</small>	CHECKED BY FRANCIS L. DOBELLON <small>SMKC/ITP MANAGER, SMKC</small>	APPROVED BY VICTORIA AR. DE AMARIS <small>CEO, SMKC</small>	SHEET CONTENT 3RD FLOOR PLAN UPPER (CCTV LAYOUT) PROPOSED STRUCTURING, CABLEING & CCTV POSITIONING	SHEET NO. 4 / 13
--	---	---	--	--	---	--	---------------------



 development academy of the philippines	PROJECT TITLE	DESIGN BY	REVISIONS APPROVAL BY	APPROVED BY	3-RD REV. CONTENT	SHEET NO.
	SPEC. CITY SEWERAGE SYSTEM FOR LEARNING AND LEISURE PARK	CHRISTIAN MARILO G. SELLERON DESIGNER	ALBERTO ANGELO M. JIMENEZ REVIEWER	MAGASA L. DOBADO ENGINEER IN CHARGE	JOYNTING AT THE OFFICE AND REVIEW	DWG: RLSR PLAN LKRD (CITY LAYOUT) - PROPOSED PROPOSED GRADE & CUT POSITION



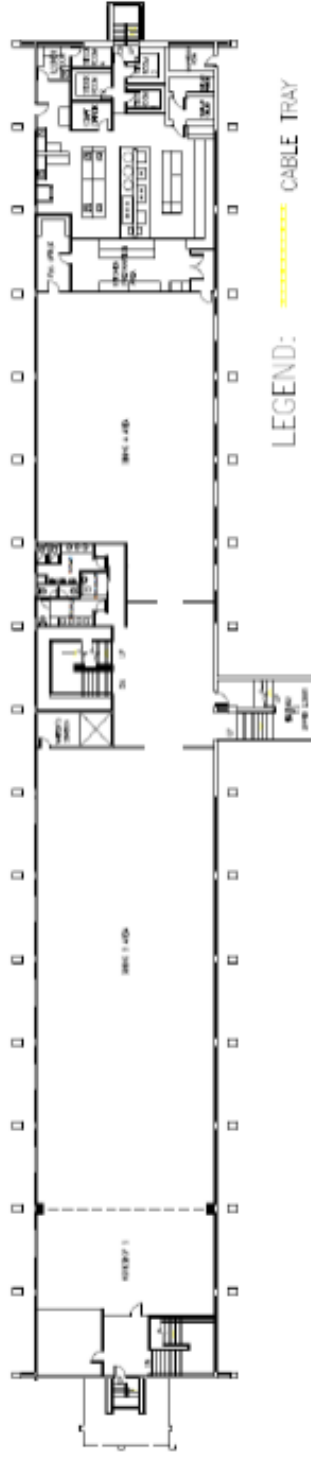
LEGEND:

-  BULLET CAMERA
-  DOME CAMERA
-  NETWORK SWITCH
-  CAT 6 CABLE

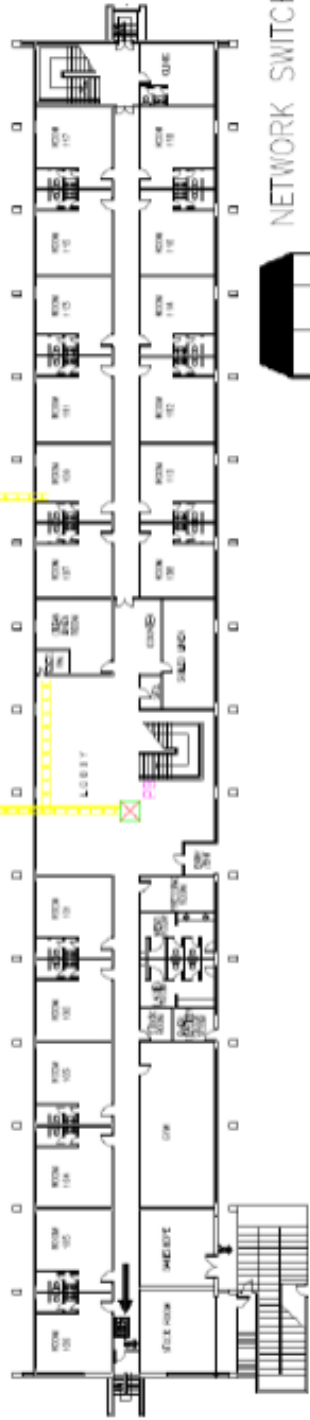
PROJECT TITLE DAPD CCTV SURVEILLANCE SYSTEM 3RD FLOOR (3RD FLOOR)	DESIGN BY CHRISTIAN YER. B. SUCLODA DESIGNER (DAPD)	RECOMMENDING APPROVAL BY ALBERTO ANGELO M. JIMENEZ MANAGER (DAPD)	APPROVED BY MORINA AT. DE JIMAS MAY. 2016	SHEET NO.	
				6	13
SHEET CONTENT 3RD FLOOR PLAN LAYOUT (CITY LAYOUT) PROVIDED (STRUCTURED CABLE & CITY POSITION)					



development academy of the
philippines



GROUND FLOOR DORMITORY BLDG



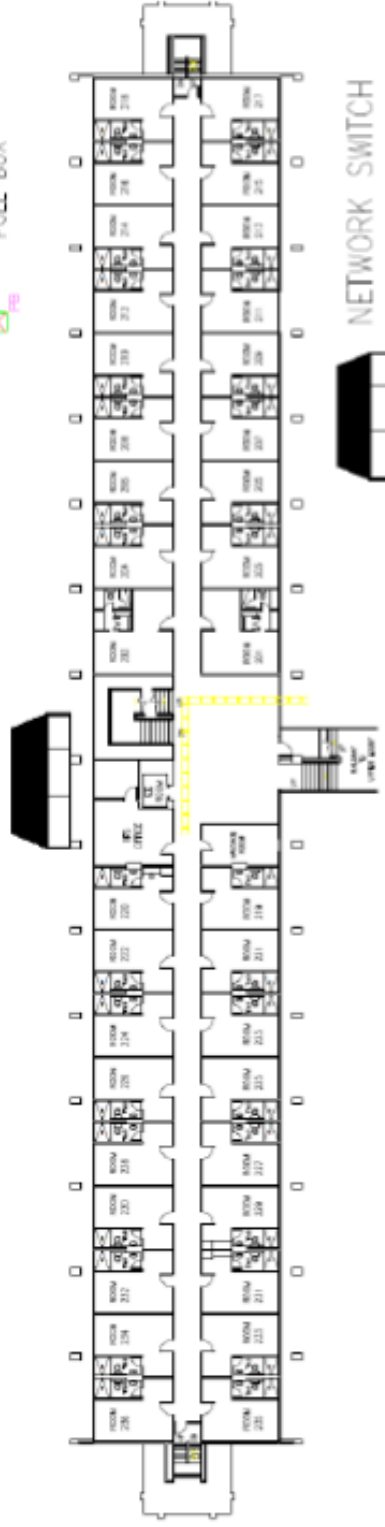
BASEMENT FLOOR DORMITORY BLDG

 development academy of the philippines	PROJECT TITLE	DESIGN BY	REVISIONS & APPROVAL BY	APPROVED BY	SHEET COMMENT	SHEET NO.
	DWG. FOR SURVEILLANCE SYSTEM FOR COMMERCIAL BUILDING FOR	CHRISTINE NER B. SELLERON SHARON NAY	ALBERTO ANIBALO W. JARDINEZ MARVIN DE	MONINA AP DE ARMAS JAY TRINIDAD	REVISIONS MADE ONLY BY DESIGNATED FLOOR STANDSTYLL BLDG	9



3RD FLOOR DORMITORY BLDG

LEGEND:
--- CABLE TRAY
■ PULL BOX

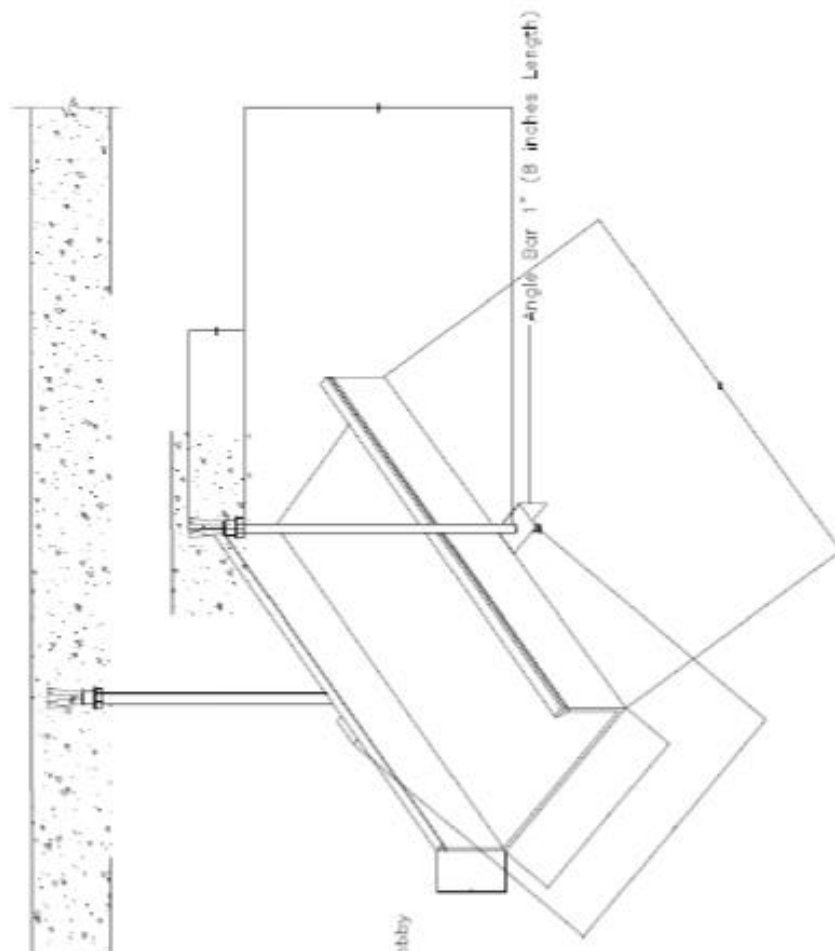


NETWORK SWITCH

2ND FLOOR DORMITORY BLDG

PROJECT TITLE DAPC CITY SUBSIDIARY SYSTEM OF CONCRETE CORED MASONRY SYSTEM	DESIGN BY CHRISTIAN VITO B. SOLERON ENRICO MUI	RECOMMENDED APPROVAL BY ALBERTO AUGUSTO M. JANDOT MARCUS	APPROVED BY MORINA ALI LE JAMES MPL. ENGINEER	SHEET NUMBER 8	TOTAL SHEETS 13
--	--	--	---	-------------------	--------------------

REVISED ORIGIN TRAY AT 2ND AND 3RD FLOOR DORMITORY BUILDING



NOTES:

1. The installed 2x6 Cable Tray were located at the following areas:
 - a.) Around Main Conference Building
 - b.) Beside the Connecting Hallway
 - c.) 3rd Floor Hallway & Lobby, back of Lobby
 - d.) 2nd Floor Hallway & Lobby, to EE Room, back of Lobby
 - e.) Basement Hallway & to EE Room
 - f.) PABX Room, Cashier Office going to Front Office
2. The Cable Trays are properly Sealed & Covered.
3. PVC Pipes are used to distribute UTP Cables from the Cable Tray to the respective CCTV Camera locations.
4. Length of Threaded Rod is 1 Meter.
5. Depth of installed Expansion Bolt is 2 inches.
6. Length of Cable Tray is 3 Meters.
7. Materials of Cable Tray
 - Metal cable trays are made of galvanized steel, stainless steel, and aluminum. Non-metallic cable trays are made of glass-fiber reinforced plastic.



development academy of the
philippines

HEAD TEL
DPP: CIVIL ENGINEERING
OR OTHERS: (02) 8866-1000

DESIGN BY
JENNIFER C. B. SORIANO
PROJECT

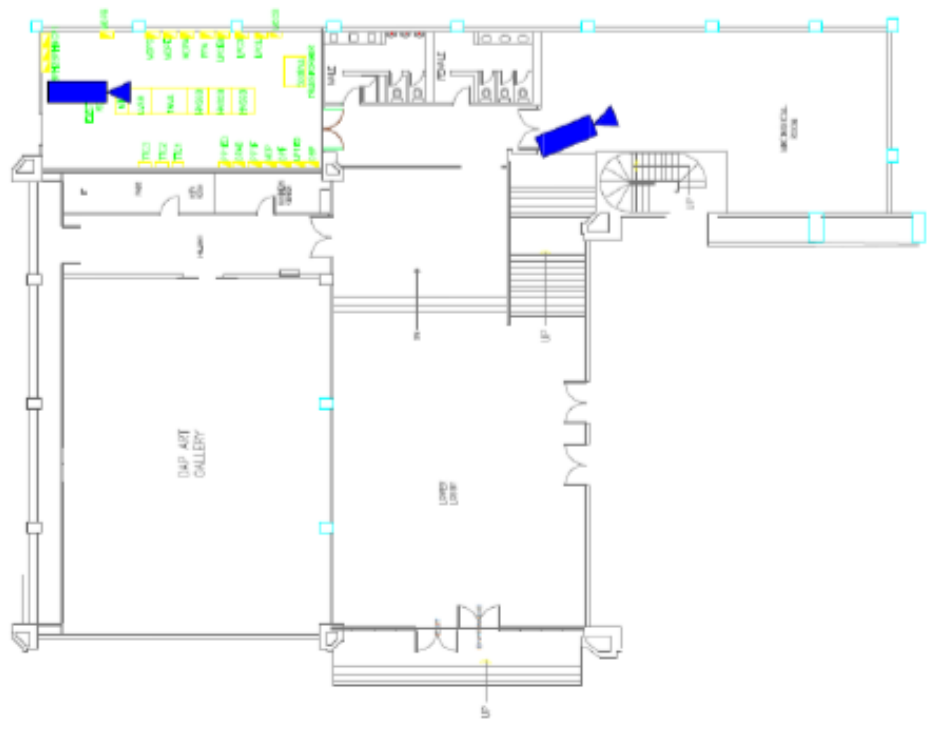
RECOMMEND APPROVAL BY
ALBERTO ABLEGA, JR., MDEC
MARCH 2018

DESIGNER: L. SORIANO
DESIGN SCALE: 1:50

APPROVED BY
MORONA L. DE ALARIN
CIVIL ENGINEER

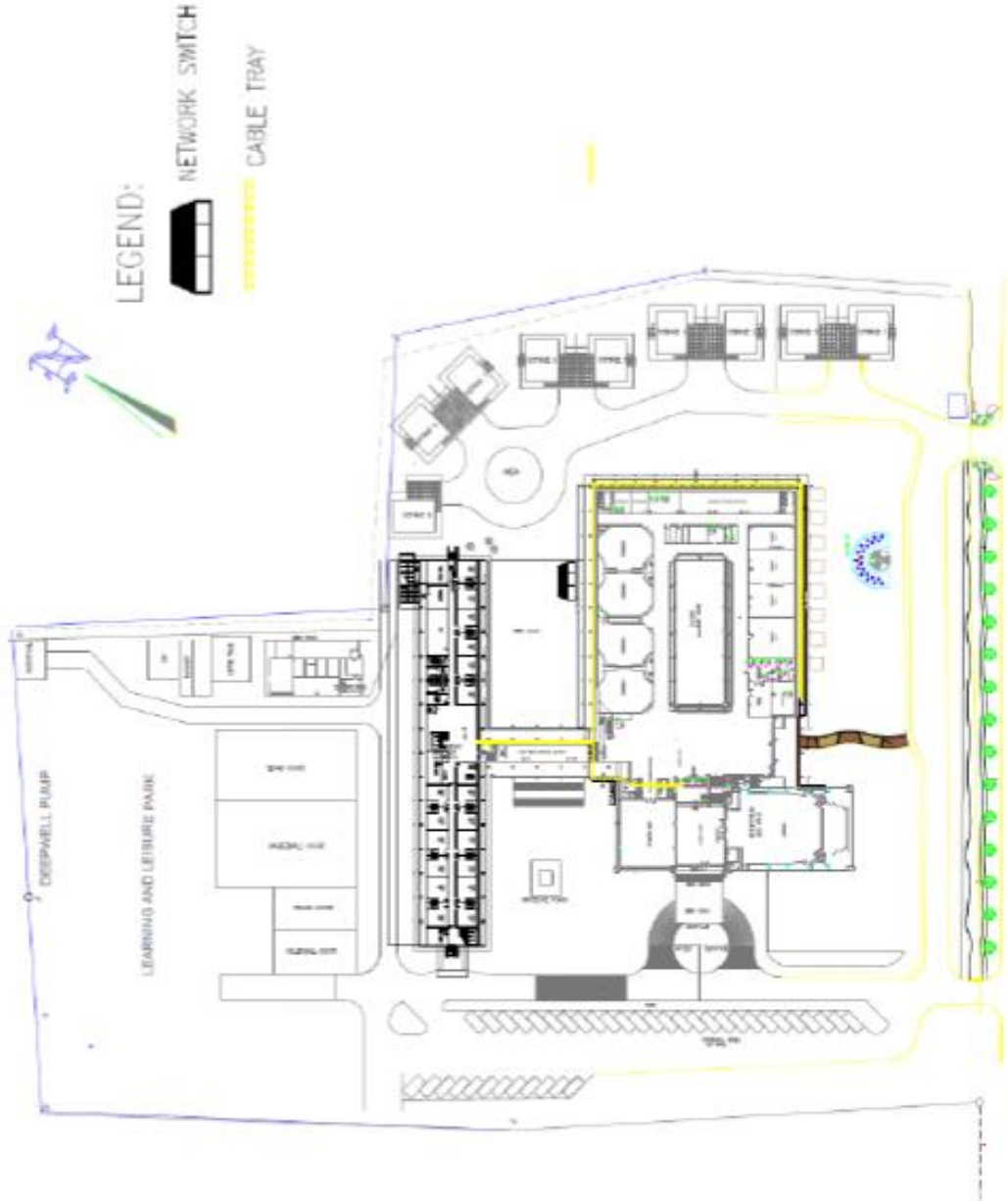
PROJECT OBJECT
CABLE TRAY DETAILS

DATE: 11/13



LEGEND:
 BULLET CAMERA

 development academy of the philippines	PROJECT TITLE	DESIGN BY	RECOMMENDING APPROVAL BY	APPROVED BY	SHEET CONTENT	SHEET NO.
	DAPCS ODTL SURVEILLANCE SYSTEM DAP SURVEILLANCE LEVEL MARKER BY	CHRISTIAN ADEL B. SAGUIDA DESIGNER	ALBERTO ANGELO M. JACINTO MANAGER	PAC-LISA L. DOBENO ENGINEERING MANAGER	MORNING ARIZONA APP. DESIGNER	ELECTRICAL ROOM AND MEDICAL ROOM



LEGEND:



NETWORK SWITCH



CABLE TRAY



development academy of the
philippines

PROJECT TITLE	DESIGN BY	RECOMMENDING APPROVAL BY	APPROVED BY	SHEET CONTENT	SHEET NO.
UNIVERSITY SUBSIDIARY SYSTEM FOR COMMUNITY COLLEGE, BAYLAC, COTABATO	CHRISTIAN VER B. SORIANO ARCHITECT	ALBERTO ANTONIO M. AMOROSO ENGINEER	MARINA DE ARDUQUE ARCHITECT	PROPOSED CABLE TRAY AT MAIN BUILDING AND CONNECTING BUILDING	10 13



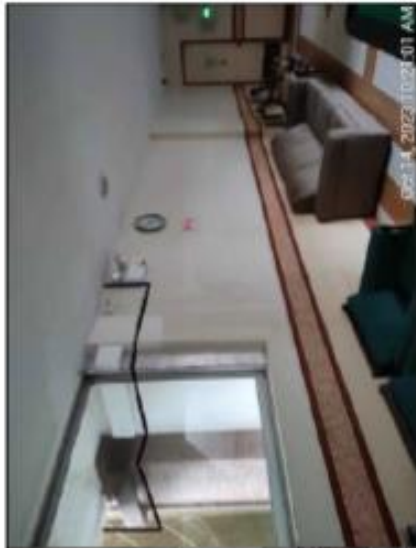
2nd Floor Lobby to EE Room

Oct 14, 2023 10:04:01 AM



3rd Floor Lobby

Oct 14, 2023 10:04:50 AM



Basement Lobby to EE Room, & Hallway

Oct 14, 2023 10:29:01 AM



Back of 3rd Floor Lobby

Oct 14, 2023 10:10:53 AM



PABX, Cashier, & Front Office

Oct 14, 2023 9:45:32 AM



Connecting Hallway

Oct 14, 2023 9:38:44 AM

PROJECT TITLE	DESIGN BY	DESIGNING ARCHITECT, INC.	APPROVED BY	3-DAY CHECK	100% AC.
DAAP CITY SUBDIVISION OFFICE FOR CONSTRUCTION REVIEW OF	CHRISTINE SOY B. DELA CRUZ (REGISTERED ARCHITECT)	ALBERTO ANGELO M. BARRERA (REGISTERED ARCHITECT)	ALBERTO ANGELO M. BARRERA (REGISTERED ARCHITECT)	ALBERTO ANGELO M. BARRERA (REGISTERED ARCHITECT)	12 / 13



Oct 16, 2023 11:57:25 AM

Main Electrical Room, & PABX Room



Oct 16, 2023 11:57:25 AM

Main Electrical Room



Oct 14, 2023 9:51:44 AM

Back of Conference Rm 5-8, FMSO, OP



Oct 14, 2023 9:51:44 AM

Back of Conference Rm 5-8, FMSO, OP



Oct 14, 2023 9:51:44 AM

Back of Conference Rm 5-8, FMSO, & OP



Oct 16, 2023 11:57:25 AM

Back of FCIL, Workshop 4A, Clinic, & PMDP Office



Oct 16, 2023 11:57:25 AM

Back of 2nd Floor Lobby, & Room 201



Oct 14, 2023 9:51:44 AM

Back of 2nd,3rd Floors Lobby, & Rms 201,301



development academy of the philippines

PROJECT TITLE	DESIGN BY	RECOMMENDATION APPROVAL BY:	APPROVED BY	9-SHEET CONTENT	SHEET NO.
IMPAC CITY SUBSIDIANCE SYSTEM FOR INTEGRAL CREDIT FINANCING OF	CHRISTOPHER B. SIBUNZA CHARLES WEE	ALBERTO JOSELO M. JIMENEZ RICHARD DE	PAUL-JUAN L. DORTADO ERWINO MARCOS UPIC	PRINTED (DATE TIME / SHEETED (DRAWING NUMBER)	13 / 13

Bidder's LETTERHEAD

FORM 2: PRICE SCHEDULE

(AS PER GPPB RESOLUTION NO. 16-2020)

INSTRUCTIONS to BIDDERS:

01. THIS FORM SHOULD BE ACCOMPLISHED USING THE BIDDER'S LETTERHEAD, SIGNED COPY SHOULD BE SUBMITTED AS PART OF THE FINANCIAL DOCUMENTS MARKED AS "F02";
02. THE SIGNED COPY OF THIS DOCUMENT (IN PDF OR JPEG FORMAT) **MUST BE PART OF THE ELECTRONIC FILES THAT SHOULD BE CONTAINED IN THE SUBMITTED ELECTRONIC BID**; AND
03. DO NOT LEAVE BLANK CELLS. KINDLY PUT N/A IF "NOT APPLICABLE";
04. KINDLY USE ADDITIONAL SHEETS IF NECESSARY; AND
05. THE FILENAME STRUCTURE SHOULD BE "**F02_XXX=PRICE_SCHEDULE=<BIDDERNAME>**".

For Goods Offered From Within the Philippines

Name of Bidder _____

Page __ of ____.

Invitation to Bid Number:

1 Item	2 Description	3 QTY	4 UNIT	5 Unit price xxx per item	6 Transportation and Insurance and all other costs incidental to delivery, per item	7 Sales and other taxes payable if Contract is awarded, per item	8 Cost of Incidental Services, if applicable, per item	9 Total Price, per unit (col 5+6+7+8)	10 Total Price delivered Final Destination (col 9) x (col 4)
HARDWARES									
1.01 Dome IP Camera	Supply and installation of Dome IP CCTV Camera: <ul style="list-style-type: none"> 4-MP 1/1.8" CMOS image sensor, low luminance, and high-definition image. Outputs max. 4MP (2688x1520) @25/30 fps. Built-in IR LED, and the max. illumination distance is 40 m. ROI, SVC, SMART H.264+/H.265+, AI H.264/H.265, encoding after filter, flexible coding, applicable to various bandwidth and 	52.00	pcs						

	<p>storage environments.</p> <ul style="list-style-type: none"> • Rotation mode, WDR, 3D NR, HLC, BLC, digital watermarking, applicable to various monitoring scenes. • With deep learning algorithm, it supports: video metadata, smart sound detection, IVS, face detection, smart object detection, and people counting, etc. • Alarm: 2 in, 1 out; audio: 1 in, 1 out; supports max. 512 GB Micro SD card, built-in MIC. • 12 VDC/24 VAC/PoE power supply; ePoE. • IP67 and IK10 protection, heater. • SMD 3.0. • with Warranty 								
1.02 Bullet IP Camera	<p>Supply and installation of Bullet IP CCTV Camera:</p> <ul style="list-style-type: none"> • 5MP (2592 × 1944) @20 fps, 1/2.7" image sensor, 24/7 Full-color image • SMART H.264+/H.265+, AI H.264/H.265 encoding • 2.8/3.6 mm fixed lens 	21.00	pcs						

	<ul style="list-style-type: none"> • Built-in warm light and IR LED; the max. IR illumination distance is 30m • Smart Dual Illumination Active Deterrence: Sound and light alarm • Support vehicle and human classification • Intelligent detection: Intrusion, tripwire • 12V DC/PoE power supply • IP67 protection • with Warranty 								
1.03 Smart POE Unmanaged Data Switch	<p>Supply and installation of 24 port Smart POE Unmanaged Data Switch:</p> <ul style="list-style-type: none"> • Smart POE Unmanaged Data Switch (The next generation Smart switch, provides 24 Port POE Switch with 2 SFP Port: Port 1–24: 24 × RJ45 10/100/1000 M (PoE); Port 25–26: 2 × RJ45 10/100/1000 (uplink); Port 27–28: 2 × SFP 1000 M (uplink) • support unified/centralized management, lifetime license • Intelligent PoE • Red Port Supports BT 90W 	6.00	pcs						

	<ul style="list-style-type: none"> • All-giga Ports • Smooth Transmission • Wide Working Temperature: -10 to 55°C (14°F to 131°F) • Plug and Play with Warranty 								
1.04 64 Channel Network Video Recorder	<p>Supply and installation of Two (2) 64 Channel Network Video Recorder:</p> <ul style="list-style-type: none"> • Smart H.265+/Smart H.264+/H.265/H.264 • support 64-ch IPC inputs, max resolution 12MP • 320Mbps input Bandwidth • Support 16-ch 1080p@30 fps self-adaptive decoding ability • 8 SATA III ports, up to 10 TB for a single HDD • 2 VGA, 2 HDMI, 2 RJ45(1000M) • Supports ONVIF protocol, DHCP, P2P function • 1-channel fisheye dewarping (AI by NVR) • AI by Camera: Perimeter protection; face detection and recognition; SMD Plus; video metadata; ANPR; 	2.00	pcs						

	<p>people counting; heat map</p> <ul style="list-style-type: none"> with Warranty 							
1.05 Data Cabinet	<p>Supply and installation of Data Cabinet:</p> <ul style="list-style-type: none"> Data Cabinet will be install at the following areas: <ul style="list-style-type: none"> ✓ PABX Room (28U / 4 feet Data Cabinet); ✓ Workshop Electrical Room (9U / 1.5 feet Data Cabinet); ✓ Electrical Room at RFS Office (9U / 1.5 feet Data Cabinet); and ✓ Basement Electrical Room (12U / 2 feet Data Cabinet) (9U, 12U, & 28U) 19" standard opening; Framing and Paneling Gauge#16, Black (powder-coated); Adjustable with mounting railings; Plexiglas Front Door with Lock; Detachable Side Panels with Lock & Ventilation; Detachable Back Panels with Lock; With 1 unit Vertical powerstrip 4 CO's, 3 prong, 220V, 20 Amp fuse; With 1 unit Vertical Cable Manager at the 	4.00	pcs					

	<ul style="list-style-type: none"> back ring type; and with 4 pcs. Exhaust Fan at the top panel with Warranty 								
1.06 10TB Hard Disk Drive	<ul style="list-style-type: none"> 10TB Surveillance Hard Disk Drive SATA III; with Warranty 	16.00	pcs						
1.07 Fiber Patch Cable End to End (300M)	<ul style="list-style-type: none"> LC with Standard Boots; LC 12mm/18mm with Short Boots; SC 25mm with Short Boots Polish Type SMF: UPC-UPC; UPC-APC; APC-APC; MMF: UPC-UPC Connector Ferrule Zirconia Ceramic Cable Outside Diameter Duplex: 1.6/2.0/3.0mm, Simplex: 0.9/2.0/3.0mm, Interchangeability $\leq 0.2\text{dB}$, Vibration $\leq 0.2\text{dB}$ with Warranty 	1.00	roll						
1.08 Fiber Optical Module	<ul style="list-style-type: none"> Multimode single fiber; LC port; 1310nm sending, and 1550nm receiving; Transmission distance up to 20km; with Warranty 	6.00	pcs						
1.09 55" LED 4K Monitor	<ul style="list-style-type: none"> 55" 4K UHD LED Monitor; Industrial level LCD panel, suitable for continuous 24/7 	2.00	pcs						

	<ul style="list-style-type: none"> operation • 4K Ultra-HD resolution • Using tamper-proof metal housing • Built-in 3D COMB filter and 3D noise reduction • 6ms response time for no motion blur or ghosting • 1.07G colors, for a realistic and immersive visual experience • High-fidelity digital processing • 178°/178° wide uninterrupted viewing angle • With Bracket • with Warranty 								
1.10 Fiber Patch Panel	<ul style="list-style-type: none"> • Category 6 180° 1U 24-Port Unshielded Patch Panel, Dual Type IDC, W/ Two Cable Management Bars, Black; • with Warranty 	6.00	pcs						
1.11 Fiber Patch Cord	<ul style="list-style-type: none"> • LC/UPC – SC/UPC Duplex Multi mode, • 9/125 Patch Cord 2M,2.0mm, LSOH; • with Warranty 	80.00	pcs						
1.12 UTP CAT6 Cable	<ul style="list-style-type: none"> • Supply & Installation of Universal Twisted Pair (UTP) Category 6 (CAT 6) Cable, 305 meter or 1000 ft. per box; • with Warranty 	1	lot						

1.13 LC Pigtail	<ul style="list-style-type: none"> Multimode OM3 Simples 1M, 4.0 mm, LSOH; with Warranty 	25.00	pcs						
1.14 Smart-UPS Power Supply	<ul style="list-style-type: none"> Supply & Installation of High frequency, On-line Smart UPS, Rack-Tower Convertible, Hot-Swappable Battery Module Design, 3KVA/2.7 KW, PF: 0.9, 72Vdc, with 6pcs X 9Ah built-in battery, with USB, RS232, EPO, SNMP function Port with Warranty 	1.00	pc						
1.15 RJ45	Supply & Installation of RJ45	1.00	lot						
1.16 Cable Manager	24 P, 1 U Cable Manager	15.00	sets						
ROUGHING-IN INSTALLATION MATERIALS									
1.17	Supply, installation and termination of Fiber Optic 4 core multimode outdoor type	1.00	Lot						
1.18	Supply, installation and termination of conduits, structured cabling installation of UTP CAT 6 Cable and Fiber Optic Cable, cable trays around the Main Conference Building, and in the side of Connecting Hallway, cable pulling, CCTV Weatherproof Conduit Boxes (100X100X70) (73 pcs), fittings, boxes, support/hangers,	1.00	Lot						

	connectors, accessories, testing, commissioning, and decommissioning.								
Area 1 (Data Cabinet Installation at PABX Room)									
1.19	Installation of Data Cabinet with height 28U / 4 ft., Powder Coated, Black, perforated two side panels, Perforated back, and front Door; German cooling fan, with three pins German type plug, 1wire,4 fans (cable length, 1M); 1U 19" power distribution unit, w/ aluminum body, US (NEMA5-15P) Plug, 6 universal outlets, w/LED master switch at PABX Room;	1.00	Lot						
1.20	Installation, testing, and commissioning of Two (2) Smart PoE Managed Switch, Two (2) Network Video Recorders, and Rackmount Smart-UPS power supply to the Data Cabinet;	1.00	Lot						
1.21	Wall installation, testing, and commissioning of Two (2) 55" LED 4K Monitors connected to NVR located at PABX Room;	1.00	Lot						
1.22	Installation of Roughing-Ins (cable trays, conduits and other necessary accessories).	1.00	Lot						
1.23	Supply, Installation, Cable Wiring	1.00	Lot						

	Termination, Testing and Commissioning of New Electrical Panel Board with 1 pc. Main Circuit Breaker (100 Amperes) Bolt-On Type and 8 pcs. Branch Circuit Breakers Bolt-On Type (1 pc. 20 Amperes for the Lighting Circuits, 1 pc. 30 Amperes for the Air Conditioning Unit, 1pc. 30 Amperes for the Convenience Outlets, 1 pc. 40 Amperes for the UPS of the existing IT Network Infrastructure, 1pc. 40 Amperes or higher for the UPS of CCTV Surveillance System, other 3 pcs. 20 Amperes Circuit Breaker for Spare Provisions)								
Area 2 (Lower Lobby Electrical and Mechanical Room IP CCTV Positions)									
1.24	Installation of Roughing-Ins (cable trays, conduits and other necessary accessories)	1.00	Lot						
1.25	Installation of Two (2) units of Indoor Dome IP CCTV Cameras at the Mechanical Room and Electrical Room Entrance;	1.00	Lot						
1.26	Wire Pulling, Laying, and Structured cabling from Smart PoE Network Switch at PABX room (for IP CCTV Cameras) to Mechanical and	1.00	Lot						

	Electrical Room located at the Lower lobby (Camera No. 74 & 75) based on Floor Plan/Layout. (See attached plan/layout)								
Area 3 (Data Cabinet Installation at Electrical room located at the RFS Office)									
1.27	Installation of One (1) unit Data Cabinet with specifications of 600 x 450, 9u/1.5Ft. 90.7kg max. loading capacity), toughed glass door w/ spring lock, detachable side panel (not vented), 2 pcs. Exhaust fan w/ cable entry at the top panel, 6 outlet PDU w/ 3.0mm cable length (220V,3prong,10A), powder coated finish, with exhaust fans at the Electrical room located at the RFS Office area; with provision of 1KVA UPS Floor/Wall Mount (4x Universal Outlets, Cable Length: 1.20 mtrs, Rated Power: 600 Watts, HxWxD: 9.25 x 16.05 x 30.5 cm	1.00	Lot						
1.28	Installation, testing, and commissioning of One (1) Smart PoE Managed Switch to the Data Cabinet;	1.00	Lot						
1.29	Installation of Roughing-Ins (cable trays, conduits and other necessary accessories).	1.00	Lot						
Area 4 (Data Cabinet Installation at Electrical room located at the Workshop Area)									
1.30	Installation of One (1) unit Data Cabinet with	1.00	Lot						

	specifications of 600 x 450, 9u/1.5Ft. 90.7kg max. loading capacity), toughed glass door w/ spring lock, detachable side panel (not vented), 2 pcs. Exhaust fan w/ cable entry at the top panel, 6 outlet PDU w/ 3.0mm cable length (220V,3prong,10A), powder coated finish, with exhaust fans at the Electrical room located at the Workshop Area; with provision of 1KVA UPS Floor/Wall Mount (4x Universal Outlets, Cable Length: 1.20 mtrs, Rated Power: 600 Watts, HxWxD: 9.25 x 16.05 x 30.5 cm								
1.31	Installation, testing, and commissioning of One (1) Smart PoE Managed Switch to the Data Cabinet.	1.00	Lot						
Area 5 (Dining and Basement Left-wing and Right-wing area, Engineering and Parking area IP CCTV Positions)									
1.32	Installation of Roughing-Ins (cable trays, conduits and other necessary accessories);	1.00	Lot						
1.33	Installation of Seventeen (17) units of Indoor Dome IP CCTV Cameras and Eight (8) Outdoor Bullet IP CCTV Cameras;	1.00	Lot						
1.34	Wire Pulling, Laying, and Structured cabling from Smart PoE Network Switch at	1.00	Lot						

	Electrical room located at Dining lobby of two (2) runs each UTP Cable (for IP CCTV Cameras) to Dining Area (No. 70, 47, 48, 49, 71, 46, 53, 68, 54), and to Basement Area (No. 45, 44, 43, 42, 40, 61,41) based on Floor Plan/ Layout. (See attached plan/ layout);								
1.35	Another Wire Pulling, Laying, and Structured cabling from Smart POE Network Switch at Electrical room located at Dining lobby of two (2) runs each UTP Cable (for IP CCTV Cameras) to Engineering, Staff lounge and Side Parking area (No. 55, 56, 59, 69, 72, 73, 76, 77, 78) based on Floor Plan/ Layout. (See attached plan/ layout);	1.00	Lot						
1.36	Conduction of Wire Termination/s along with appropriate Testing & Commissioning and De-commissioning of old wires and hardware.	1.00	Lot						
Area 6 (2nd-floor and 3rd floor Left-wing and Right-wing IP CCTV Positions)									
1.37	Installation of Roughing-Ins (cable trays, conduits and other necessary accessories);	1.00	Lot						
1.38	Installation of Fifteen (15) units of Indoor Dome IP CCTV Cameras;	1.00	Lot						
1.39	Wire Pulling, Laying,	1.00	Lot						

	and Structured cabling from Smart PoE Network Switch at Electrical room located at Dining lobby of two (2) runs each UTP Cable (for IP CCTV Cameras) to 2nd floor Area (No. 24, 33, 34, 35, 36, 37, 38, 39), and to 3rd floor Area (No. 26, 27, 28, 29, 30, 31, 32) based on Floor Plan/ Layout. (See attached plan/ layout);								
1.40	Conduction of Wire Termination/s along with appropriate Testing & Commissioning and De-commissioning of old wires and hardware.	1.00	Lot						
Area 7a (Upper Lobby and Function Room Area IP CCTV Positions)									
1.41	Installation of Roughing-Ins (cable trays, conduits and other necessary accessories);	1.00	Lot						
1.42	Installation of Thirteen (13) units of Indoor Dome IP CCTV Cameras and Five (5) Outdoor Bullet IP CCTV Cameras;	1.00	Lot						
1.43	Wire Pulling, Laying, and Structured cabling from Smart PoE Network Switch at Electrical room located in front of Workshop Male CR of two (2) runs each UTP Cable (for IP CCTV Cameras) to Upper lobby and Function room Area (No.1, 9, 10, 11, 12, 13,	1.00	Lot						

	14, 15, 16, 17, 18, 19, 20, 21, 22, 23, 25, 52) based on Floor Plan/ Layout. (See attached plan/ layout);								
1.44	Conduction of Wire Termination/s along with appropriate Testing & Commissioning and De-commissioning of old wires and hardware.	1.00	Lot						
Area 7b (Upper Lobby and Function Room Area IP CCTV Positions)									
1.45	Installation of Roughing-Ins (cable trays, conduits and other necessary accessories);	1.00	Lot						
1.46	Installation of Two (2) units of Indoor Dome IP CCTV Cameras and Two (2) Outdoor Bullet IP CCTV Cameras;	1.00	Lot						
1.47	Wire Pulling, Laying, and Structured cabling from Smart PoE Network Switch located at PABX of two (2) runs each UTP Cable (for IP CCTV Cameras) to Upper lobby and Function room Area (No.7, 8, 50, 51) based on Floor Plan/ Layout. (See attached plan/ layout);	1.00	Lot						
1.48	Conduction of Wire Termination/s along with appropriate Testing & Commissioning.	1.00	Lot						
Area 8 (Lower Lobby and Side Parking Area IP CCTV Positions)									
1.49	Installation of Roughing-Ins (cable	1.00	Lot						

	trays, conduits and other necessary accessories);								
1.50	Installation of Five (5) units of Indoor Dome IP CCTV Cameras and Four (4) Outdoor Bullet IP CCTV Cameras;	1.00	Lot						
1.51	Wire Pulling, Laying, and Structured cabling from Smart PoE Network Switch located at PABX of two (2) runs each UTP Cable (for IP CCTV Cameras) to Upper lobby and Function room Area (No.2, 3, 4, 5, 6, 57, 58, 60, 62) based on Floor Plan/ Layout. (See attached plan/layout);	1.00	Lot						
1.52	Conduction of Wire Termination/s along with appropriate Testing & Commissioning.	1.00	Lot						
General Requirements									
1.53	Mobilization of Manpower, equipment, tools, and temporary facilities. Provide temporary field office with health/safety/first aid facility and utilities with corresponding sub-meters to be connected to sub-meters to be connected to supply of water and electricity. Provide Personal Protective Equipment (PPE) and other Safety & Health Paraphernalia.	1.00	Lot						

1.54	Obtain building permits, and other necessary permits such as Electronic and/or Electrical Permits as required for the project;	1.00	Lot						
1.55	Supply and deliver all devices needed to install the upgraded CCTV System such as but not limited to: IP CCTV Cameras, Network Video Recorder, Wires and Cables, Data Switches, Monitors, Hard Disk Drives, etc.;	1.00	Lot						
1.56	Install piping, structured cabling, cable trays, hangers, base mountings, cabinets, accessories, CCTV devices such as cameras and video recorder, etc. in accordance to correct engineering standards and material specifications as cited in its operating manual;	1.00	Lot						
Turn-Over and Acceptance									
1.57	End to End Termination, Testing including Fluke testing and Optimal Time-Domain Reflectometer (OTDR) & Commissioning, Fiber Optics, Networking, Fiber Optic Cable Design, and Installation, Fiber Termination and Fusion Splicing (FOC	1.00	Lot						

	<p>Fusion Machine), FOC Patch Panel Splicing, and Termination, Continuity Testing Power source and Light Meters Configuration, Installation / termination and adjustment, and Programming, Decommissioning and Turn-over of all identified obsolete CCTV Cameras, Cablings, and other accessories, and system integration and configuration of existing CCTV System at Cottages (via internet/data connection) for the entire IP CCTV system. Repair of three (3) identified CCTV units at Cottages. Supply and installation of 4+2 100 Mbps Long-Range PoE Switch (Model: WI-PS205H).</p>							
1.58	<p>Clean and restore the areas affected during and after the installation and testing including rectification/correction of punch-listed items;</p>	1.00	Lot					
1.59	<p>Demobilization. Dismantling of temporary facilities, pullout of debris resulting from the conduct of the works</p>	1.00	Lot					
1.60	<p>The Contractor/Supplier</p>	1.00	Lot					

	shall provide a quarterly preventive maintenance checkup, free of charge for at least one year after the system has been commissioned and accepted by DAP;								
1.61	<p>Submission of Post Documentary requirements:</p> <ul style="list-style-type: none"> • Original Copy of "Record Drawings/Plans" complete with legend, technical specifications, and measurements; • Compilation of Periodic Project Reports including photo documentations before, during, and after implementation works. Each photo-documentation should have the date and time stamps, in jpg-format; • As-Built Plans: <ul style="list-style-type: none"> ✓ Six (6) set of original copy in 30" x 40" sheets (drawn on a mylar sheets) signed and sealed by appropriate professional and/or engineers; ✓ Six (6) sets of 	1.00	Lot						

	<p>blue print copies in 30" x 40" sheets signed and sealed by appropriate professional architects and engineers; and</p> <ul style="list-style-type: none"> ✓ Complete set of electronic files in USB Thumb Drive of "AS-BUILT PLANS" in PDF and CAD format. • Manuals of all supplied and installed equipment comprising the Technical Specifications and Product Installation Instructions; • Operational Brochure/s; • Maintenance Manuals, including draft of Process and Work Instruction Manual (PAWIM) for the use of DAPCC Maintenance Personnel; • Conduct training of the DAP maintenance personnel who will operate and maintain all equipment, facilities and utilities installed; 								
--	---	--	--	--	--	--	--	--	--

--	--	--	--	--	--	--	--	--

Name: _____
Legal Capacity: _____
Signature: _____
Duly authorized to sign Bid for and on behalf of _____